

ORIGINAL RESEARCH

Impact of Pulmonary Hypertension on Outcomes After Transcatheter Tricuspid Valve Edge-to-Edge Repair

Lukas Stolz, MD,^{a,b} Karl-Patrik Kresoja, MD,^c Jennifer von Stein, MD,^d Vera Fortmeier, MD,^e Benedikt Koell, MD,^{f,g} Wolfgang Rottbauer, MD,^h Mohammad Kassar, MD,ⁱ Bjoern Goebel, MD,^j Paolo Denti, MD,^k Paul Achouh, MD,^l Tienush Rassaf, MD,^m Manuel Barreiro-Perez, MD,ⁿ Peter Boekstegers, MD,^o Andreas Rück, MD,^p Philipp M. Doldi, MD,^a Julia Novotny, MD,^a Monika Zdanyte, MD,^q Marianna Adamo, MD,^r Flavien Vincent, MD, PhD,^s Philipp Schlegel, MD,^t Ralph-Stephan von Bardeleben, MD,^c Thomas J. Stocker, MD,^{a,b} Ludwig T. Weckbach, MD,^{a,b} Mirjam G. Wild, MD,^u Christian Besler, MD,^u Stephanie Brunner, MD,^v Stefan Toggweiler, MD,^v Julia Grapsa, MD,^w Tiffany Patterson, MD,^w Holger Thiele, MD,^x Tobias Kister, MD,^x Giuseppe Tarantini, MD, PhD,^y Giulia Masiero, MD,^y Marco De Carlo, MD,^z Alessandro Sticchi, MD,^z Mathias H. Konstandin, MD,^t Eric Van Belle, MD, PhD,^s Marco Metra, MD,^r Tobias Geisler, MD,^q Rodrigo Estévez-Loureiro, MD,ⁿ Peter Luedike, MD,^m Nicole Karam, MD,^l Francesco Maisano, MD,^k Philipp Lauten, MD,^j Fabien Praz, MD,ⁱ Mirjam Kessler, MD,^h Daniel Kalbacher, MD,^{f,g} Volker Rudolph, MD,^e Christos Iliadis, MD,^d Philipp Lurz, MD,^c Jörg Hausleiter, MD,^{a,b} the EuroTR Investigators

ABSTRACT

BACKGROUND Data regarding the association of pulmonary hypertension (PH) and outcomes in patients undergoing transcatheter tricuspid valve edge-to-edge repair (T-TEER) are scarce.

OBJECTIVES The aims of this study were 1) to investigate the impact of PH on outcomes after T-TEER; and 2) to shed further light on the role of pre- and postcapillary PH in patients undergoing T-TEER for relevant tricuspid regurgitation (TR).

METHODS The study included patients from the EuroTR (European Registry of Transcatheter Repair for Tricuspid Regurgitation; [NCT06307262](https://clinicaltrials.gov/ct2/show/study/NCT06307262)) registry who underwent T-TEER for relevant TR from 2016 until 2023 with available invasive evaluation of systolic pulmonary artery pressure (sPAP) using right heart catheterization. Study endpoints were procedural TR reduction, improvement in NYHA function class, and a combined endpoint of death or heart failure hospitalization (HFH) at 2 years.

RESULTS Among a total of 1,230 patients (mean age 78.6 ± 7.0 years, 51.4% women), increasing sPAP was independently associated with increasing rates of 2-year death or HFH (HR: 1.027; 95% CI: 1.003-1.052; $P = 0.030$; median survival follow-up 343 days [Q1-Q3: 114-645 days]). No significant survival differences were observed for patients with pre- vs postcapillary PH. Sensitivity analysis revealed an sPAP value of 46 mm Hg as the optimized threshold for the prediction of death or HFH. Being observed in 526 patients (42.8%), elevated sPAP (>46 mm Hg) was associated with more severe heart failure symptoms at baseline and follow-up. Importantly, NYHA functional class significantly improved and TR severity was significantly reduced irrespective of PH.

CONCLUSIONS PH is an important outcome predictor in patients undergoing T-TEER for relevant TR. In contrast to previous studies, no significant differences were observed for patients with pre- and postcapillary PH in terms of survival free from HFH. (JACC Cardiovasc Interv. 2024;■:■-■) © 2024 The Authors. Published by Elsevier on behalf of the American College of Cardiology Foundation. This is an open access article under the CC BY license (<http://creativecommons.org/licenses/by/4.0/>).

**ABBREVIATIONS
AND ACRONYMS****dPAP** = diastolic pulmonary artery pressure**HFH** = heart failure hospitalization**mPAP** = mean pulmonary artery pressure**PCWP** = pulmonary capillary wedge pressure**PH** = pulmonary hypertension**PVR** = pulmonary vascular resistance**RHC** = right heart catheterization**sPAP** = systolic pulmonary artery pressure**TPG** = transpulmonary gradient**TR** = tricuspid regurgitation**T-TEER** = tricuspid valve transcatheter edge-to-edge repair

Transcatheter tricuspid valve edge-to-edge repair (T-TEER) has emerged as a safe and effective treatment option for patients with tricuspid regurgitation (TR). The TRILUMINATE (Clinical Trial to Evaluate Cardiovascular Outcomes in Patients Treated With the Tricuspid Valve Repair System) trial demonstrated superiority of the T-TEER procedure beyond optimal medical therapy regarding a combined endpoint of death, heart failure hospitalization (HFH), need for tricuspid valve surgery, and Kansas City Cardiomyopathy Questionnaire score improvement.¹ The study was subject to several strict eligibility criteria² and excluded patients with significant pulmonary hypertension (PH; systolic pulmonary artery pressure [sPAP] \geq 70 mm Hg) or a relevant precapillary component.¹ A previous analysis from the TriValve (Transcatheter Tricuspid Valve Therapies) registry did not observe significant outcome differences in interventional

treated patients with TR after stratification for pulmonary pressures.³ Of note, the study assessed sPAP echocardiographically, which is known to underestimate real pressure conditions because of rapid systolic pressure equalization in the presence of severe TR.^{4,5} Previous studies have shown that discordance of echocardiographically and invasively measured sPAP provides prognostic value beyond the degree of PH itself.⁴ Beyond that, data regarding the

dedicated impact of precapillary PH in T-TEER patients are currently limited to small patient numbers.⁶ The aim of this subanalysis from EuroTR (European Registry of Transcatheter Repair for Tricuspid Regurgitation) was to shed further light on the complex interaction of PH and T-TEER treatment. The aims of the study were to: 1) investigate the association of PH with outcomes after T-TEER; and 2) shed further light on the role of pre- and postcapillary PH in patients undergoing T-TEER for relevant TR.

METHODS

STUDY POPULATION AND TREATMENT. This study included patients from the EuroTR registry (NCT06307262), which is a large, retrospective, international study among patients who underwent T-TEER from 2016 until 2023 with available invasive evaluation of sPAP using right heart catheterization (RHC). Patients with concomitant mitral valve edge-to-edge repair were excluded from the analysis. Baseline differences for included and excluded patients are outlined in [Supplemental Table 1](#). All patients remained symptomatic despite up-titration of maximum tolerated diuretic medication doses. After discussion by an interdisciplinary heart team, the decision in favor of an interventional treatment approach was made according to each center's standard of care practice. T-TEER was performed as previously described using either the PASCAL device (Edwards Lifesciences) or the MitraClip or TriClip

From the ^aMedizinische Klinik und Poliklinik I, LMU Klinikum, LMU München, Munich, Germany; ^bGerman Center for Cardiovascular Research, Partner Site Munich Heart Alliance, Munich, Germany; ^cDepartment of Cardiology, Cardiology I, University Medical Center of the Johannes Gutenberg-University Mainz, Mainz, Germany; ^dDepartment of Cardiology, Heart Center, University of Cologne, Cologne, Germany; ^eDepartment of General and Interventional Cardiology, Heart and Diabetes Center North Rhine-Westphalia, Ruhr University Bochum, Bad Oeynhausen, Germany; ^fDepartment of Cardiology, University Heart and Vascular Center Hamburg, University Medical Center Hamburg-Eppendorf, Hamburg, Germany; ^gGerman Center for Cardiovascular Research, Partner Site Hamburg/Kiel/Lübeck, Hamburg, Germany; ^hDepartment of Cardiology, University Heart Center Ulm, Ulm, Germany; ⁱDepartment of Cardiology, Inselspital Bern, Bern University Hospital, Bern, Switzerland; ^jDepartment of Cardiology, Heart Center, Zentralklinik Bad Berka, Bad Berka, Germany; ^kHeart Valve Center, Cardio-Thoracic-Vascular Department, IRCCS, Milan, Italy; ^lCardiology Department, European Hospital Georges Pompidou, Université Cité, Paris, France; ^mUniversity Hospital Essen, University Duisburg-Essen, West German Heart and Vascular Center, Department of Cardiology and Vascular Medicine, Essen, Germany; ⁿHospital Álvaro Cunqueiro, Vigo, Spain; ^oDepartment of Cardiology, Helios Klinikum Siegburg, Germany; ^pDepartment of Cardiology, Karolinska University Hospital, Stockholm, Sweden; ^qMedical Clinic III, University Hospital Tübingen, Tübingen, Germany; ^rASST Spedali Civili di Brescia and Department of Medical and Surgical Specialties, Radiological Sciences, and Public Health, University of Brescia, Brescia, Italy; ^sCardiology Department, Centre Hospitalier Universitaire De Lille, Lille, France; ^tDepartment of Internal Medicine III, Division of Cardiology, University Hospital Heidelberg, Ruprecht-Karl University Heidelberg, Heidelberg, Germany; ^uUniversity Heart Center Freiburg/Bad Krozingen, Bad Krozingen, Germany; ^vHeart Center Lucerne, Luzerner Kantonsspital, Lucerne, Switzerland; ^wDepartment of Cardiology, Guys and St. Thomas NHS Trust, London, United Kingdom; ^xDepartment of Cardiology, Heart Center Leipzig, University of Leipzig, Leipzig, Germany; ^yDepartment of Cardiac, Thoracic Vascular Sciences and Public Health, University of Padua, Padua, Italy; and the ^zCardiothoracic and Vascular Department, Azienda Ospedaliero-Universitaria Pisana, Pisa, Italy.

The authors attest they are in compliance with human studies committees and animal welfare regulations of the authors' institutions and Food and Drug Administration guidelines, including patient consent where appropriate. For more information, visit the [Author Center](#).

TABLE 1 Study Baseline Characteristics

	All Patients (N = 1,230)	sPAP ≤ 46 mm Hg (n = 704)	sPAP > 46 mm Hg (n = 526)	P Value
Clinical data				
Female (n = 1,230)	632 (51.4)	385 (54.7)	279 (53.0)	0.007
Age, y (n = 1,230)	78.6 ± 7.0	78.8 ± 7.0	78.2 ± 8.2	0.430
BMI, kg/m ² (n = 1,208)	26.3 ± 5.0	25.6 ± 4.5	27.2 ± 5.5	<0.001
EuroSCORE II, % (n = 1,150)	4.8 (2.6-7.7)	4.2 (2.3-7.4)	5.2 (3.1-8.5)	<0.001
TRI-SCORE, points (n = 410)	7 (5-8)	7 (5-8)	7 (6-9)	0.037
TRI-SCORE, % (n = 410)	34.0 (14.0-48.0)	34.0 (14.0-48.0)	34.0 (22.0-65.0)	0.043
AHT (n = 1,164)	990 (85.1)	549 (82.8)	441 (88.0)	0.013
Dyslipidemia (n = 1,159)	566 (48.8)	315 (47.8)	251 (50.0)	0.418
Peripheral edema (n = 1,125)	786 (64.2)	422 (60.2)	364 (69.5)	<0.001
Ascites (n = 1,224)	172 (14.1)	86 (12.3)	86 (16.4)	0.040
Jugular vein distension (n = 613)	88 (14.4)	66 (20.0)	22 (7.8)	<0.001
Prior MI (n = 1,230)	141 (11.5)	78 (11.1)	63 (12.0)	0.625
COPD (n = 1,230)	230 (18.7)	113 (16.1)	117 (22.2)	0.006
DM (n = 1,163)	304 (26.1)	132 (19.9)	172 (34.3)	<0.001
Prior stroke (n = 881)	105 (11.9)	64 (12.9)	41 (10.7)	0.318
TV lead (n = 1,230)	364 (29.6)	194 (27.6)	170 (32.3)	0.070
AF/atrial flutter (n = n = 1,123)	1,123 (91.3)	645 (91.6)	478 (90.9)	0.647
CAD (545)	545 (44.3)	294 (41.8)	251 (47.7)	0.038
eGFR, mL/min (n = 948)	48.5 ± 23.1	51.4 ± 23.7	44.8 ± 21.8	<0.001
NT-proBNP, pg/mL (n = 1,184)	4,672 ± 8,046	3,857 ± 6,181	5,786 ± 9,952	<0.001
MRA (n = 1,229)	522 (42.5)	288 (41.0)	234 (44.5)	0.217
Loop diuretic agent (n = 1,225)	1,138 (92.9)	648 (92.7)	490 (93.1)	0.809
Thiazide diuretic agent (n = 944)	209 (22.1)	108 (20.1)	101 (24.8)	0.092
Beta-blocker (n = 1,228)	1,038 (84.5)	597 (85.0)	441 (83.8)	0.564
RASI (n = 944)	564 (59.7)	320 (59.8)	244 (59.7)	0.962
Hemodynamic data				
sPAP, mm Hg (n = 1,230)	45.9 ± 14.6	35.9 ± 6.8	59.4 ± 11.0	<0.001
dPAP, mm Hg (n = 1,109)	18.7 ± 7.9	14.9 ± 5.6	23.6 ± 7.6	<0.001
mPAP, mm Hg (n = 1,204)	29.3 ± 9.4	23.5 ± 5.6	37.1 ± 7.6	<0.001
PCWP, mm Hg (n = 869)	18.9 ± 7.2	15.5 ± 5.4	23.5 ± 6.6	<0.001
TPG, mm Hg (n = 847)	10.9 ± 5.9	8.5 ± 4.0	13.9 ± 6.4	<0.001
CO, mL/min (n = 590)	4.2 ± 1.5	3.9 ± 1.2	4.6 ± 1.7	<0.001
PVR, WU (n = 547)	2.9 ± 1.7	2.4 ± 1.3	3.5 ± 2.0	<0.001

Continued on the next page

system (Abbott Vascular). RHC was performed prior to T-TEER after optimized medical recompensation in a euvolemic stable situation as judged by each center.

STUDY VARIABLES AND ENDPOINTS. RHC-derived hemodynamic parameters included pulmonary artery pressures (sPAP, diastolic pulmonary artery pressure [dPAP], and mean pulmonary artery pressure [mPAP]), mean pulmonary capillary wedge pressure (PCWP), pulmonary vascular resistance (PVR) and cardiac output. The transpulmonary gradient (TPG) was calculated as the difference between mPAP and mean PCWP. Echocardiographic evaluation was performed in line with current guidelines and as previously described for the EuroTR registry.^{7,8} Echocardiographic sPAP was calculated by adding estimated right atrial pressure derived from width and respiratory variability of the inferior vena

cava to the maximum systolic right atrial-right ventricular pressure gradient. TR severity was assessed using a 5-grade scale⁹: mild, moderate, severe, massive, and torrential. According to current guideline recommendations, PH was defined as mPAP >20 mm Hg. Subtypes of PH were distinguished as follows: precapillary PH (PVR > 2 Wood units), postcapillary PH (PCWP ≥ 15 mm Hg), and mixed pre- and postcapillary PH (PVR > 2 WU and PCWP ≥ 15 mm Hg).¹⁰ On the basis of a previous study of PH in the context of T-TEER, patients were additionally classified into the following categories: no significant PH (mPAP ≤ 30 mm Hg), significant postcapillary PH (mPAP > 30 mm Hg and TPG ≤ 17 mm Hg), and significant precapillary PH (mPAP > 30 mm Hg and TPG > 17 mm Hg).⁶

Study endpoints were procedural TR reduction, improvement in NYHA functional class, and a

TABLE 1 Continued

	All Patients (N = 1,230)	sPAP ≤ 46 mm Hg (n = 704)	sPAP > 46 mm Hg (n = 526)	P Value
Echocardiographic data				
LVEF, % (n = 1,200)	52.6 ± 11.4	53.0 ± 10.8	52.2 ± 12.1	0.343
LVEDD, mm (n = 1,121)	48.9 ± 8.6	47.9 ± 8.4	50.2 ± 8.6	<0.001
TR EROA, cm ² (n = 1,122)	0.70 ± 0.60	0.78 ± 0.72	0.60 ± 0.37	<0.001
TR RegVol, mL (n = 1,047)	53.8 ± 30.8	54.1 ± 34.6	53.5 ± 25.0	0.178
TR VC, mm (n = 1,145)	11.4 ± 5.8	11.6 ± 4.6	11.1 ± 7.0	0.010
RV FAC, % (n = 1,013)	42.5 ± 72.7	40.5 ± 11.3	37.6 ± 11.2	<0.001
RV EDA, cm ² (n = 724)	27.0 ± 9.9	26.5 ± 9.6	27.7 ± 10.1	0.085
RV ESA, cm ² (n = 695)	17.1 ± 7.1	16.4 ± 6.7	18.0 ± 7.4	0.002
RVmid, mm (n = 1,018)	40.9 ± 9.0	40.2 ± 9.2	41.7 ± 8.7	0.001
RVbase, mm (n = 795)	49.0 ± 9.2	48.5 ± 9.6	50.0 ± 8.9	0.126
RV length, mm (n = 737)	70.3 ± 12.7	69.1 ± 12.4	71.9 ± 13.0	0.003
TV annular diameter, mm (n = 1,109)	44.1 ± 8.4	43.5 ± 8.0	44.8 ± 8.7	0.016
RAA, cm ² (n = 1,044)	36.6 ± 13.3	36.9 ± 14.6	36.2 ± 11.2	0.704
TAPSE, mm (n = 1,185)	17.2 ± 4.6	17.4 ± 4.6	16.9 ± 4.6	0.027
sPAP _{echo} , mm Hg (n = 1,097)	43.0 ± 15.1	37.2 ± 11.1	50.4 ± 16.3	<0.001
Coaptation gap, mm (n = 744)	6.2 ± 2.9	6.4 ± 3.0	5.8 ± 2.8	0.008
Tenting height, mm (n = 709)	7.7 ± 3.3	7.9 ± 3.4	7.5 ± 3.1	0.286
Tenting area, cm ² (n = 670)	1.91 ± 1.12	1.95 ± 1.11	1.87 ± 1.12	0.275
TR etiology (n = 1,209)				0.558
Primary	63 (5.2)	41 (5.9)	22 (4.3)	
Secondary	1,040 (86.4)	591 (85.5)	449 (87.5)	
Mixed	101 (8.4)	59 (8.5)	42 (8.2)	
MR severity (n = 1,209)				0.042
0+	94 (7.8)	62 (9.0)	32 (6.2)	
1+	816 (67.5)	467 (67.6)	349 (67.2)	
2+	277 (22.9)	155 (22.5)	122 (23.5)	
3+	21 (1.7)	6 (0.9)	15 (2.9)	
4+	1 (0.1)	0 (0.0)	1 (0.4)	

Values are n (%), mean ± SD, or median (Q1-Q3). P values in **bold** denote statistical significance.

AF = atrial fibrillation; AHT = arterial hypertension; BMI = body mass index; CAD = coronary artery disease; CO = cardiac output; COPD = chronic obstructive pulmonary disease; DM = diabetes mellitus; dPAP = diastolic pulmonary artery pressure; EDA = end-diastolic area; eGFR = estimated glomerular filtration rate; EROA = effective regurgitant orifice area; ESA = end-systolic area; EuroSCORE = European System for Cardiac Operative Risk Evaluation; FAC = fractional area change; LVEDD = left ventricular end-diastolic diameter; LVEF = left ventricular ejection fraction; MI = myocardial infarction; mPAP = mean pulmonary artery pressure; MR = mitral regurgitation; MRA = mineralocorticoid receptor antagonist; NT-proBNP = N-terminal prohormone of brain natriuretic peptide; PCWP = pulmonary capillary wedge pressure; PVR = pulmonary vascular resistance; RAA = right atrial area; RASi = renin-angiotensin-aldosterone system inhibitor; RegVol = regurgitant volume; RV = right ventricular; RVbase = right ventricular basal diameter; RVmid = right ventricular midventricular diameter; sPAP = systolic pulmonary artery pressure; sPAP_{echo} = echocardiographically estimated systolic pulmonary artery pressure; TAPSE = tricuspid annular plane systolic excursion; TPG = transpulmonary gradient; TR = tricuspid regurgitation; TV = tricuspid valve; VC = vena contracta; WU = Wood units.

combined endpoint of all-cause death or HFH at 2 years. This study adhered to the principles outlined in the Declaration of Helsinki and received proper ethical oversight.

STATISTICAL ANALYSIS. Data are expressed as mean ± SD or median (Q1-Q3). Independent samples were compared using the Mann-Whitney *U* test. The Wilcoxon test was used for comparison of dependent samples. Two-year rates of all-cause death or HFH were depicted using cumulative incidence curves. Independent predictors of 2-year rates of all-cause death or HFH were identified using a multivariable Cox regression model including all parameters yielding statistical significance in a univariable analysis. Time-dependent receiver-operating characteristic analysis was used to identify an optimized cutoff

for sPAP with regard to 2-year death or HFH. Statistical significance of survival differences was calculated using the log-rank test. The level of statistical significance was set to a 2-sided *P* value <0.05. All analyses were performed using R version 4.0.4 (R Foundation for Statistical Computing) and SPSS version 25 (IBM).

RESULTS

BASELINE CHARACTERISTICS AND OVERALL

OUTCOMES. The study included 1,230 T-TEER patients at a mean age of 78.6 ± 7.0 years (51.4% women). Detailed baseline characteristics are presented in **Table 1**. Torrential TR was present in 19.9%, massive TR in 31.1%, and severe TR in 46.9% of patients, as represented by a mean effective regurgitant

orifice area and regurgitant volume of $0.70 \pm 0.60 \text{ cm}^2$ and $53.8 \pm 30.8 \text{ mL}$, respectively. Overall, left ventricular function was preserved (left ventricular ejection fraction $52.6\% \pm 11.4\%$) and right ventricular function appeared borderline (tricuspid annular plane systolic excursion $17.2 \pm 4.6 \text{ mm}$). Echocardiographically measured sPAP was $43.0 \pm 15.1 \text{ mm Hg}$. Cardiac and noncardiac comorbidities were common and included arterial hypertension (85.1%), diabetes mellitus (26.1%), chronic obstructive pulmonary disease (18.7%), and previous stroke (11.9%). Surgical risk was elevated as expressed by a mean TRI-SCORE and European System for Cardiac Operative Risk Evaluation II score of 7 points (Q1-Q3: 5-8 points) (predicted in-hospital mortality after isolated tricuspid valve surgery 34.0% [Q1-Q3: 14.0%-48.0%]) and 4.8% [Q1-Q3: 2.6%-7.7], respectively. Patients had exertional dyspnea (NYHA functional class \geq III in 86.7%), peripheral edema (64.2%), ascites (14.1%), and jugular vein distension (14.4%).

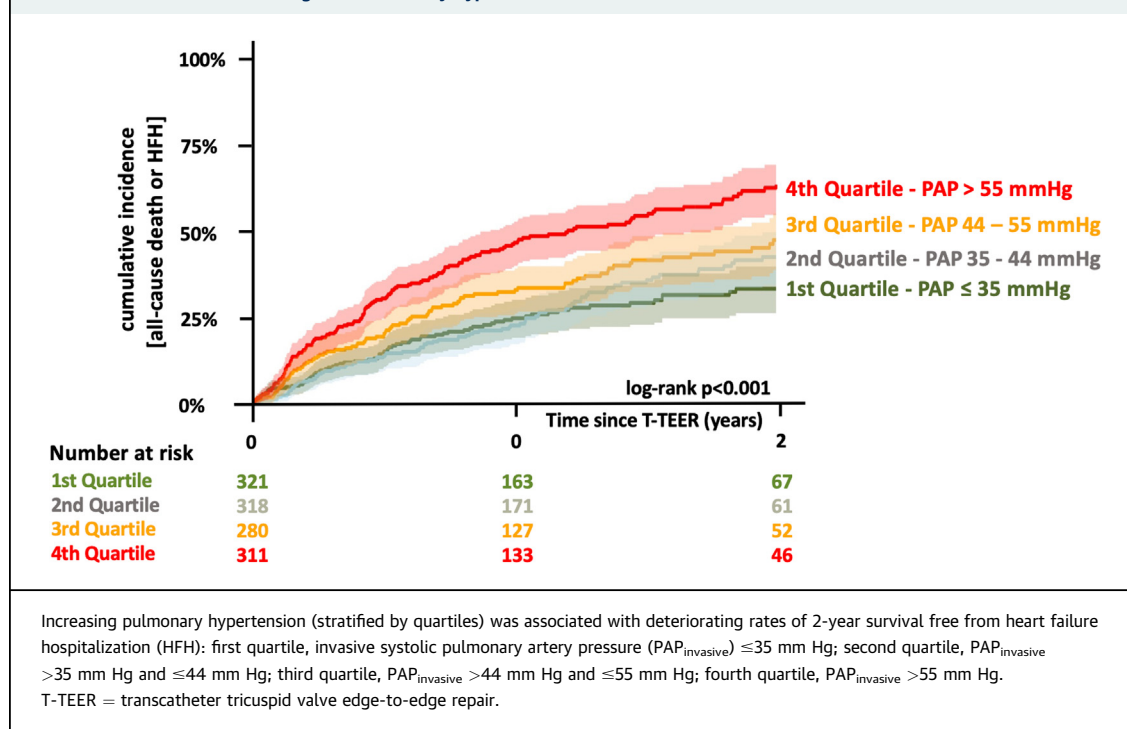
Mean sPAP_{invasive}, dPAP_{invasive}, and mPAP_{invasive} were 45.9 ± 14.6 , 18.7 ± 7.9 , and $29.3 \pm 9.4 \text{ mm Hg}$, respectively. Further hemodynamic data derived from RHC were cardiac output ($4.2 \pm 1.5 \text{ L/min}$), PCWP ($18.9 \pm 7.2 \text{ mm Hg}$), PVR ($2.9 \pm 1.7 \text{ mm Hg}$), and

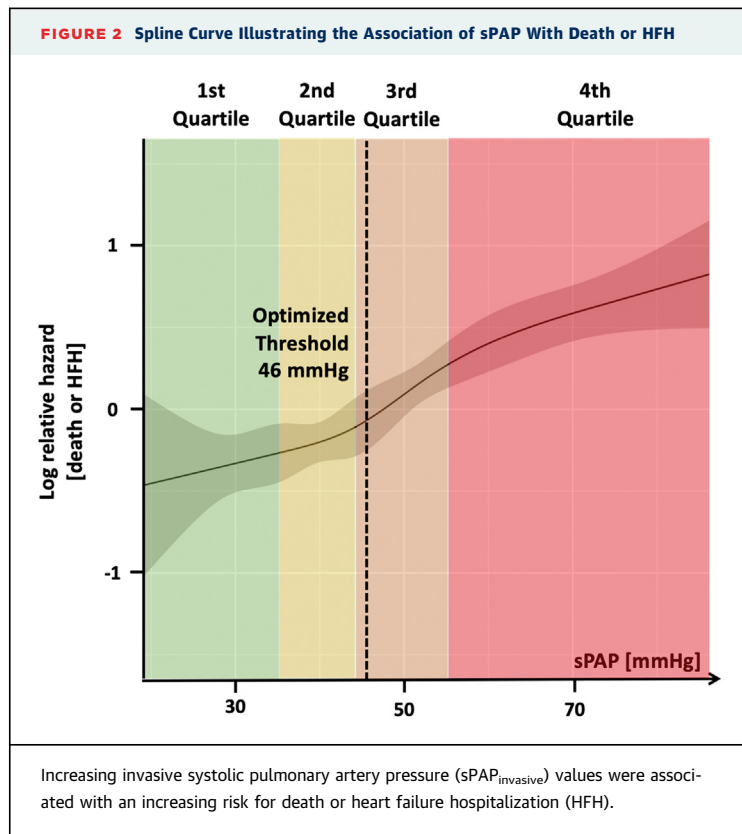
TABLE 2 Clinical and Echocardiographic Outcomes

	All Patients (N = 1,230)	sPAP $\leq 46 \text{ mm Hg}$ (n = 704)	sPAP $> 46 \text{ mm Hg}$ (n = 526)	P Value
TR severity (n = 1,224)				<0.001
Moderate	26 (2.1)	14 (2.0)	32 (6.2)	
Severe	574 (46.9)	288 (41.1)	286 (54.6)	
Massive	381 (31.1)	224 (32.0)	157 (30.0)	
Torrential	243 (19.9)	174 (24.9)	69 (13.2)	
TR severity at discharge (n = 1,203)				0.021
Mild	572 (47.5)	319 (46.1)	253 (49.5)	
Moderate	422 (35.1)	236 (34.1)	186 (36.4)	
Severe	172 (14.3)	110 (15.9)	62 (12.1)	
Massive	25 (2.1)	20 (2.9)	5 (1.0)	
Torrential	12 (1.0)	7 (1.0)	5 (1.0)	
NYHA functional class (n = 1,224)				0.029
I	12 (1.0)	7 (1.0)	5 (1.0)	
II	151 (12.3)	100 (14.3)	51 (9.7)	
III	882 (72.1)	509 (72.2)	373 (71.2)	
IV	179 (14.6)	84 (12.0)	95 (18.1)	
NYHA functional class at follow-up (n = 808)				<0.001
I	118 (14.6)	73 (15.4)	45 (13.4)	
II	370 (45.8)	238 (50.3)	132 (39.4)	
III	276 (34.2)	143 (30.2)	133 (39.7)	
IV	44 (5.4)	19 (4.0)	25 (7.5)	

Values are n (%). P values in **bold** denote statistical significance.

Abbreviations as in [Table 1](#).

FIGURE 1 Association of the Degree of Pulmonary Hypertension and 2-Year Survival Free From HFH



TPG (10.9 ± 5.9 mm Hg). TR was reduced to moderate or less in 82.6% of patients and remained reduced to moderate or less in 72.7% at latest available echocardiographic follow-up examination at a median of 343 days (Q1-Q3: 111-392 days) (Table 2). Median survival follow-up was 343 days (Q1-Q3: 114-645 days). Within the overall study cohort, survival free from HFH was 70.5% (Q1-Q3: 67.7%-73.4%) after 1 year and 56.3% (Q1-Q3: 52.9%-60.0%) after 2 years. NYHA functional class improved to \leq II in 60.4% of patients at latest available follow-up (median time to follow-up 338 days [Q1-Q3: 118-393 days]).

PROGNOSTIC IMPACT OF PH IN T-TEER PATIENTS.

Increasing sPAP_{invasive} was associated with decreasing rates of 2-year survival free from HFH (first quartile [≤ 35 mm Hg]: 69.1% [Q1-Q3: 63.0%-75.7%]; second quartile [>35 and ≤ 44 mm Hg]: 60.5% [Q1-Q3: 53.7%-68.0%]; third quartile [>44 and ≤ 55 mm Hg]: 55.9% [Q1-Q3: 48.8%-64.0%]; fourth quartile [>55 mm Hg]: 40.8% [Q1-Q3: 34.5%-48.3%]; $P < 0.001$) (Figures 1 and 2). The independent predictive value of sPAP_{invasive} regarding a combined endpoint of all-cause death or HFH was conformed in a multivariable Cox regression model (HR: 1.027; 95% CI: 1.003-1.052; $P = 0.030$) (Supplemental Table 2). The only independent invasive

hemodynamic outcome predictor besides sPAP_{invasive} was dPAP_{invasive}. Both parameters yielded comparable prognostic value (area under the curve 0.625 for sPAP_{invasive} vs 0.649 for dPAP_{invasive}; $P = 0.100$). A time-dependent sensitivity analysis identified an sPAP_{invasive} value of 46 mm Hg as the optimal cutoff regarding 2-year survival free from HFH. Being observed in 526 patients (42.8%), elevated sPAP (>46 mm Hg) was associated with worse survival free from HFH after T-TEER (1 year: 60.1% [Q1-Q3: 55.7%-64.9%] vs 78.3% [Q1-Q3: 75.0%-81.8%] [$P < 0.001$]; 2 years: 44.7% [Q1-Q3: 39.6%-50.4%] vs 65.6% [Q1-Q3: 61.2%-70.3%] [$P < 0.001$]) (Figure 3A). Comparable results were seen for 2-year survival (1 year: 74.7% vs 86.2% [$P < 0.001$]; 2 years: 60.3% vs 75.2% [$P < 0.001$]) (Figure 3B). At baseline and discharge, TR was more severe in patients with sPAP_{invasive} ≤ 46 mm Hg (massive and torrential TR in 56.9% vs 43.2% [$P < 0.001$] at baseline and at least severe in 19.8% vs 14.1% [$P = 0.021$] at discharge). However, T-TEER significantly reduced TR irrespective of sPAP ($P < 0.001$ for both) (Figure 4A).

The presence of severe PH was associated with more severe heart failure symptoms at baseline (NYHA functional class IV in 12.0% in patients with sPAP_{invasive} ≤ 46 mm Hg vs 18.1% in patients with sPAP_{invasive} >46 mm Hg; $P = 0.029$). However, NYHA functional class significantly improved irrespective of PH ($P < 0.001$ for both) (Figure 4B). Results regarding survival, survival free from HFH, TR reduction, and symptomatic reduction were comparable when stratifying patients by sPAP ≥ 70 mm Hg vs sPAP < 70 mm Hg a threshold, which has often been used as exclusion criterion for clinical trials (Supplemental Figures 1-3).

SUBTYPES OF PH ACCORDING TO GUIDELINE RECOMMENDATIONS.

PCWP was ≥ 15 mm Hg in 614 patients (70.7%). Elevated PCWP yielded univariable but no multivariable prognostic significance in terms of 2-year survival free from HFH (49.6% [Q1-Q3: 44.7%-55.0%] vs 59.7% [Q1-Q3: 52.1%-68.5%]; $P = 0.005$) (Figure 5A). PVR was increased to >2 Wood units in 347 patients (63.4%) but did not significantly affect survival free from HFH (57.5% [Q1-Q3: 50.9%-64.9%] vs 51.3% [Q1-Q3: 43.0%-61.2%]; $P = 0.098$) (Figure 5B). The same applied for individuals with TPGs >17 mm Hg, which was observed in 14.2% of patients (44.8% [Q1-Q3: 32.9%-59.2%] vs 53.9% [Q1-Q3: 49.3%-58.7%]; $P = 0.085$) (Figure 5C). Figure 5D differentiates survival free from HFH in patients with precapillary, postcapillary, and mixed pre- and postcapillary PH. Differences in baseline characteristics for these 3 groups are presented in Supplemental Table 3.

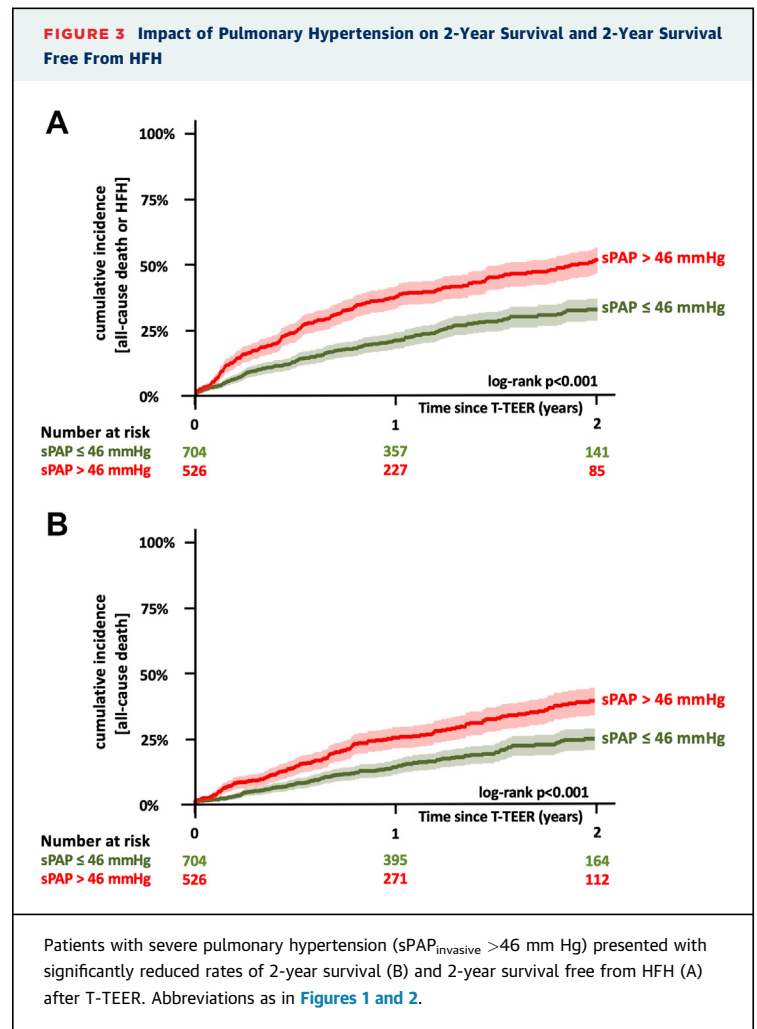
SUBTYPES OF PH. According to the previously used definition of PH,⁶ no significant difference between pre- and postcapillary PH was observed in 65.1%, 10.5%, and 24.5% of patients, respectively. Although the presence of significant either pre- or postcapillary PH was associated with significantly impaired rates of 2-year survival free from HFH, no difference was observed between both subtypes of PH ($P < 0.001$) (Figure 6).

DISCUSSION

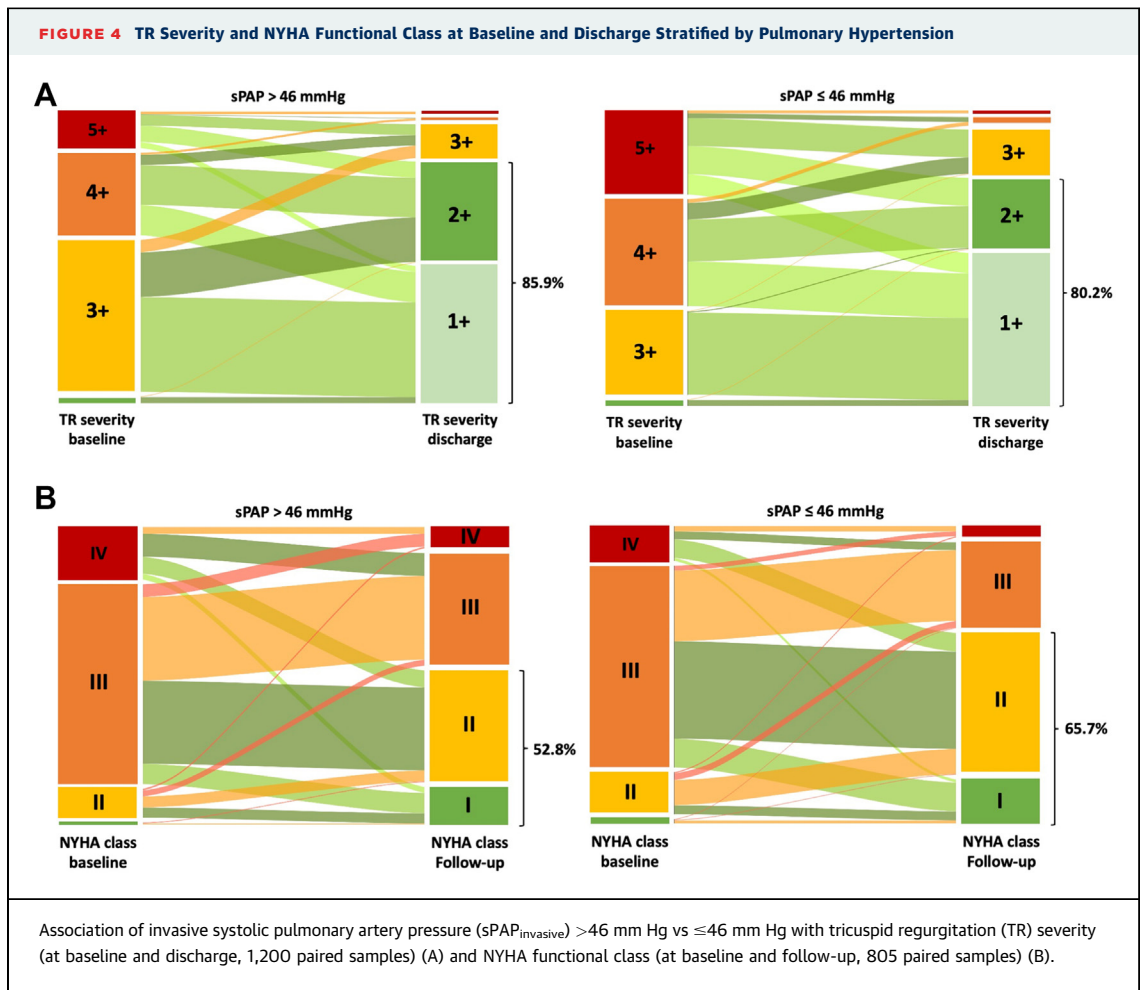
On the basis of data from the international EuroTR registry, this study gives further insights into the prognostic value of RHC-derived hemodynamic status in patients undergoing T-TEER for relevant TR. To the best of our knowledge, this is the largest population of T-TEER patients with available RHC data. Importantly, the EuroTR registry also included patients with extensive or relevant precapillary PH, who have been excluded from clinical trials in the field of T-TEER. The main findings of this study can be summarized as followed (Central Illustration): 1) the extent of PH (increasing sPAP_{invasive}) was significantly associated with increasing rates of mortality and HFH after T-TEER; 2) NYHA functional class improved and TR severity decreased irrespective of PH; and 3) no significant difference in survival free from HFH was observed when comparing patients with pre- vs postcapillary PH

RHC PRIOR TO T-TEER. Especially in the early days of T-TEER, the necessity of routinely performing RHC prior to the procedure was intensively discussed. In 2020, Lurz et al⁴ demonstrated that echocardiographically estimated sPAP values underestimate the true pulmonary pressure conditions because of rapid systolic pressure equalization in the presence of large coaptation gaps and severe TR. Patients with discordant invasive and echocardiographic sPAP values presented with remarkably reduced 1-year survival free from HFH after the procedure (<25%). Given those findings, RHC has become an important tool in the diagnostic work-up of patients with TR being evaluated for treatment.

PROGNOSTIC VALUE OF PH IN T-TEER. The present study underlines the fact that sufficient TR reduction can be achieved irrespective of the presence of PH. However, the absolute degree of PH (increasing sPAP) was a major predictor for a combined endpoint of 2-year death or HFH. As represented by a higher NYHA functional class at baseline, PH itself seems to contribute to patients' symptomatic status. Excluding patients with severe PH from large randomized



controlled trials seemed reasonable at the time but limits our knowledge on the benefit of T-TEER beyond medical treatment in this subgroup of patients. Given the fact that medical treatment in the setting of precapillary PH at the moment is limited to few drugs, T-TEER might be a reasonable treatment option in patients with severe PH, as approximately 40% of patients improved to NYHA functional class ≤II. Against the background of limited randomized evidence and clearly reduced survival rates, discussing the expected benefit with patients and their relatives seems crucial. However, dedicated randomized data are needed to gain a better understanding of what T-TEER can achieve in patients with excessively elevated pulmonary artery pressures. Prerequisite for adequate hemodynamic evaluation of patients with severe TR is optimized medical prehabilitation prior to RHC. In this real-world registry, patients were prepared according to the internal standards of each center. However, variability of

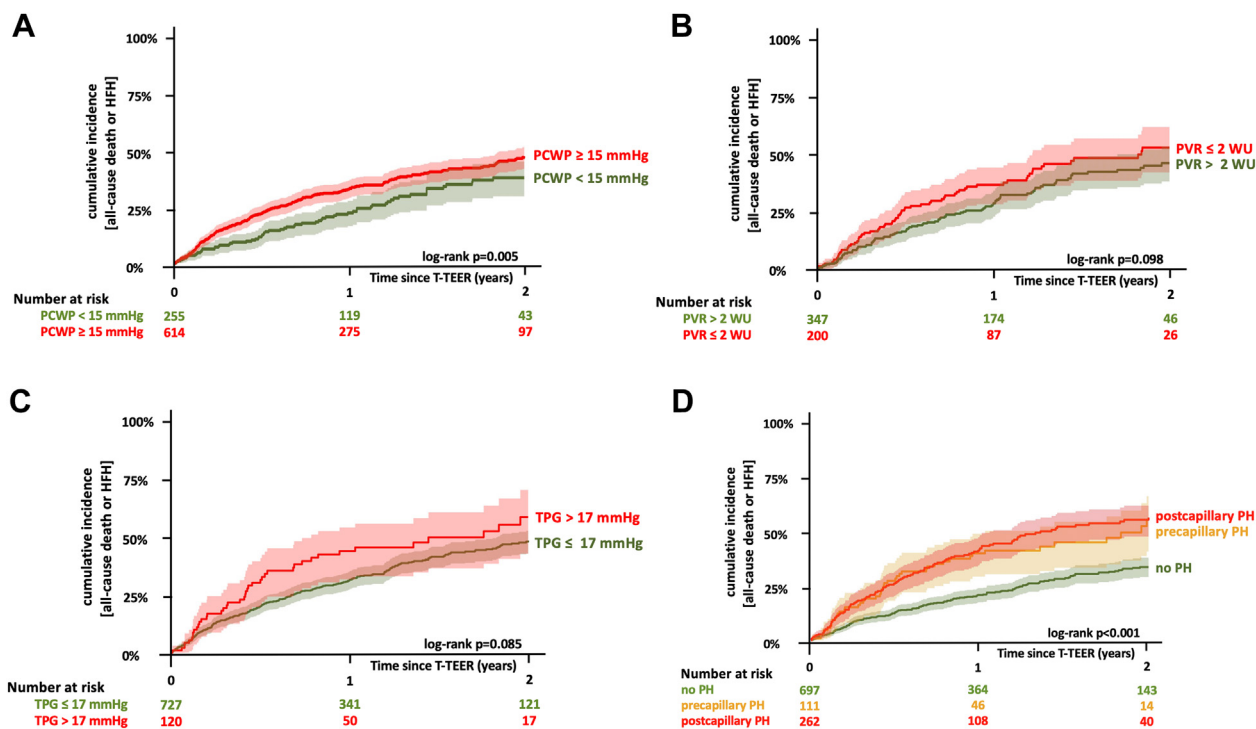


hemodynamic measurements might have an influence on prognostic considerations after T-TEER.

PRE- VS POSTCAPILLARY PH. In contrast to echocardiographic estimation of sPAP, RHC allows differentiation between pre- and postcapillary PH. In a multicentric cohort of 236 T-TEER patients, individuals with significant precapillary PH (mPAP >30 mm Hg and TPG >17 mm Hg) had significantly reduced 1-year survival rates compared with those without (mPAP ≤30 mm Hg) or significant postcapillary PH (mPAP >30 mm Hg and TPG ≤17 mm Hg).⁶

When applying those criteria to the considerably larger EuroTR registry, the aforementioned results could not be reproduced. In the present analysis, patients with pre- and postcapillary PH presented with equally reduced 2-year rates of survival free from HFH (precapillary 42.8% vs postcapillary 41.8%). The fact that patients with precapillary PH did not experience worse outcomes compared with those with postcapillary PH seems to be supported by

the fact that stratification of patients by PCWP ≥15 mm Hg vs PCWP <15 mm Hg but not by PVR > 2 Wood units vs PVR ≤2 WU yielded prognostic significance in terms of survival free from HFH (Figures 6A and 6B). In line with these findings, stratification of patients into precapillary, postcapillary, and mixed pre- and postcapillary PH according to recent European guidelines¹⁰ revealed comparable 2-year survival rates free from HFH in patients with precapillary, mixed, and postcapillary PH (56.3% and 57.6%). Reasons for the discrepancy of previous studies and the result of this analysis regarding the prognostic significance of precapillary PH remain speculative. In previous studies, the subgroups of patients with precapillary PH were relatively small, and the comorbidity in the respective individuals was high, which might have confounded the comparably high mortality rates. In the meantime, patient selection seems to have improved, which possibly explains a lower overall mortality rate in patients with precapillary PH undergoing T-TEER.

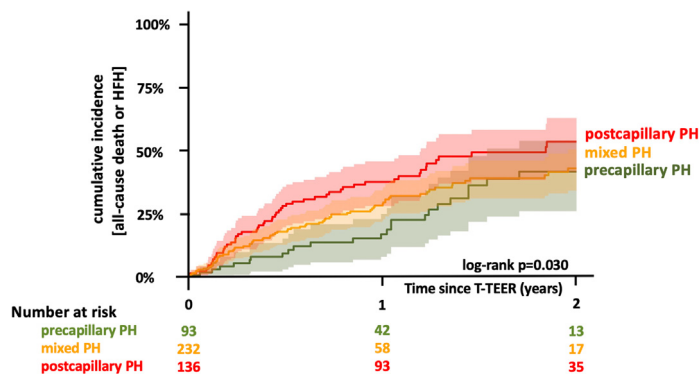
FIGURE 5 Impact of Pre- and Postcapillary PH on Survival Free From HFH After T-TEER

Impact of pulmonary capillary wedge pressure (PCWP) (A), pulmonary vascular resistance (PVR) (B), transpulmonary gradient (TPG) (C), and precapillary, postcapillary, and mixed pre- and postcapillary pulmonary hypertension (PH) (D) on 2-year survival free from HFH after T-TEER. Abbreviations as in Figure 1.

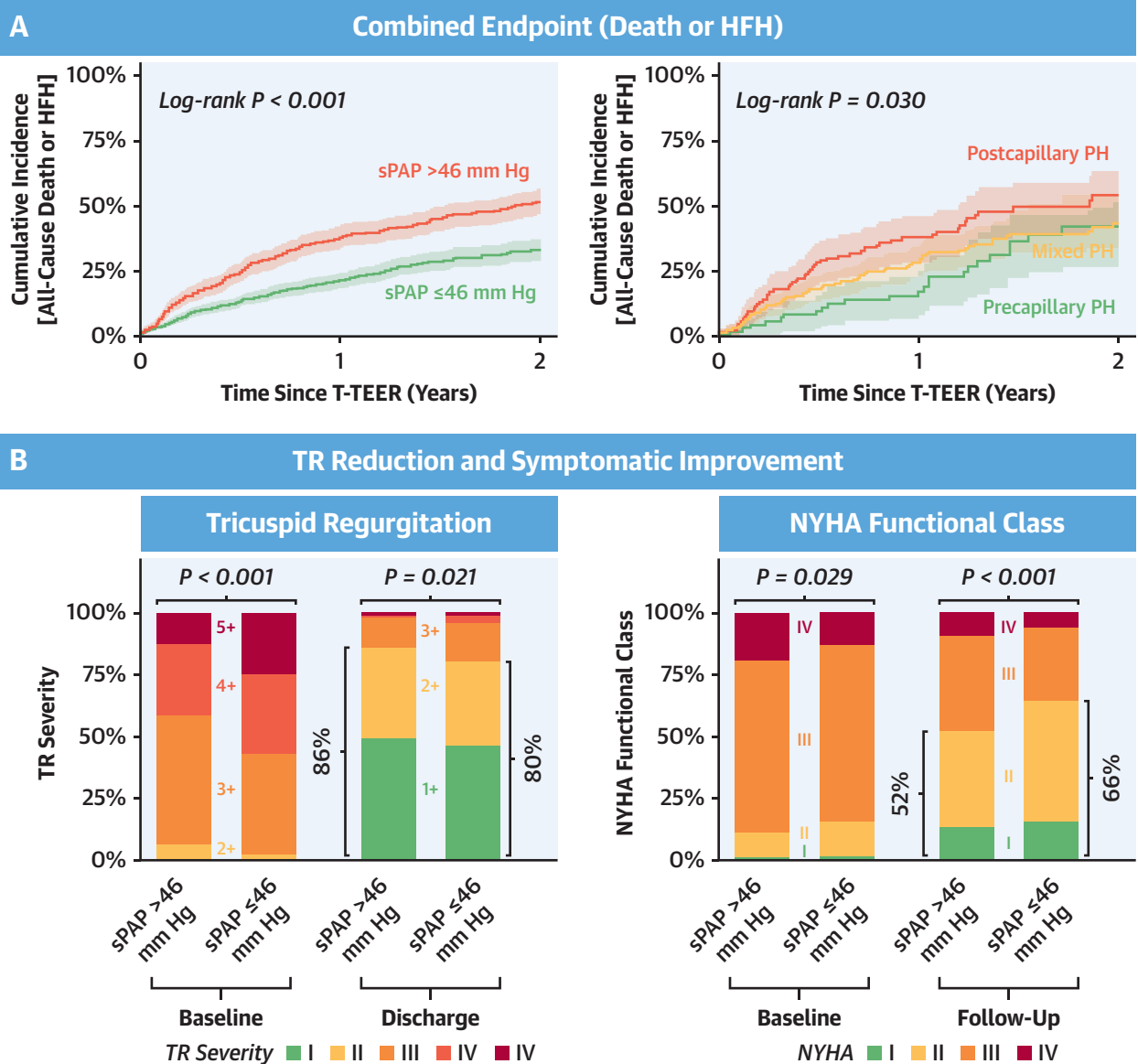
The fact that especially the overall degree of PH determined outcomes after T-TEER further strengthens the role of an integrated heart team approach to TR, including not only cardiologists, cardiac surgeons, and electrophysiologists but also heart failure and PH specialists in particular. In patients with heart failure with reduced ejection fraction, up-titration of guideline-directed medical therapy and, if indicated, cardiac resynchronization therapy might reduce PCWP and hence improve PH, which might affect outcomes. Although evidence for the use of sodium-glucose cotransporter 2 inhibitors in the setting of heart failure with preserved ejection fraction in general is growing, data on the impact of this medication class on outcomes in patients with heart failure with preserved ejection fraction undergoing T-TEER for severe TR remain unavailable.

STUDY LIMITATIONS. Although this is the largest study presenting RHC data for consecutive T-TEER patients in a large multicenter approach, the analysis is subject to a number of limitations. All reported data are site reported and did not undergo core laboratory review. Of note, information regarding the medical

treatment of patients with precapillary PH was not available. However, patients were considered to be on optimized medical treatment as judged by the local heart teams. Beyond that, echocardiographic

FIGURE 6 2-Year Survival Free From HFH Stratified by Significant Pre- and Postcapillary PH

Although the presence of significant either pre- or postcapillary PH was associated with significantly impaired rates of 2-year survival free from HFH, no difference was observed for both subtypes of PH ($P < 0.001$). Abbreviations as in Figures 1 and 5.

CENTRAL ILLUSTRATION Impact of Pulmonary Hypertension on Outcomes Following Transcatheter Tricuspid Valve Edge-to-Edge Repair (N = 1,230)

- The extent of pulmonary hypertension was significantly associated with increasing rates of mortality and HFH after T-TEER
- Even patients with severe PH (>46 mm Hg) presented with symptomatic improvement after T-TEER as expressed by NYHA functional class
- There was no significant difference in survival free from HFH when comparing patients with precapillary and postcapillary PH
- There was no significant difference in TR reduction when comparing patients with precapillary and postcapillary PH

Stolz L, et al. JACC Cardiovasc Interv. 2024;■(■):■-■.

HFH = heart failure hospitalization; PH = pulmonary hypertension; sPAP = systolic pulmonary artery pressure; TR = tricuspid regurgitation; T-TEER = transcatheter tricuspid valve edge-to-edge repair.

data regarding right ventricular function after T-TEER were not available.

CONCLUSIONS

In patients undergoing T-TEER for relevant symptomatic TR, increased PH was associated with progressively impaired 2-year survival free from HFH. In contrast to previous publications, pre- and post-capillary PH had comparable impact on outcomes after the procedure. Given the fact that echocardiographically measured sPAP values significantly underestimated true pressure conditions, especially in the presence of massive and torrential TR, we believe that RHC should routinely be performed within the diagnostic work-up to allow discussion of patient expectations from a T-TEER procedure, ultimately leading to a more informed and personalized approach of patient care.

FUNDING SUPPORT AND AUTHOR DISCLOSURES

Dr Stolz has received speaker honoraria from Edwards Lifesciences. Dr Kresoja has received travel expenses from Edwards Lifesciences. Dr von Stein has received lecture honoraria from Edwards Lifesciences. Dr Rottbauer has received speaker honoraria from Edwards Lifesciences and Abbott. Dr Denti has served as a consultant for InnovHeart, Picardia, HVR, and Approxima; and has received speaker honoraria from Abbott and Edwards Lifesciences. Dr Rassaf has received speaker honoraria and consulting fees from AstraZeneca, Bayer, Pfizer, and Daiichi-Sankyo. Dr Barreiro-Perez has received speaker fees from Abbott Vascular, Edwards Lifesciences, and Venus Medtech. Dr Adamo has received consulting fees in the past 3 years from Abbott Structural Heart and Edwards Lifesciences. Dr von Bardeleben has received institutional grants from and has served as a speaker for Abbott Vascular and Edwards Lifesciences. Dr Toggweiler has received personal honoraria from Medtronic, Boston Scientific, Biosensors, Abbott Vascular, Medira, Shockwave Medical, Teleflex, atHeart Medical, Cardiac Dimensions, Polares Medical, Amarin, Sanofi, AstraZeneca, ReCor Medical, and Daiichi-Sankyo; has received institutional research grants from Edwards Lifesciences, Boston Scientific, Fumedica, Novartis, and Boehringer Ingelheim; and holds equity in Hi-D Imaging. Dr Metra has received consulting fees in the past 3 years from Abbott Structural Heart, AstraZeneca, Bayer, Boehringer Ingelheim, Edwards Lifesciences, and Roche Diagnostics. Dr Geisler has received speaker honoraria and research grants from AstraZeneca, Bayer, Bristol Myers Squibb/Pfizer, Ferrer/Chiesi, Medtronic, and Edwards Lifesciences (all unrelated to this study). Dr Estévez-Loureiro has received speaker fees from Abbott Vascular, Edwards Lifesciences, Boston Scientific, and Venus Medtech. Dr Lüdiike has received speaker honoraria and consulting fees from

AstraZeneca, Bayer, Pfizer, and Edwards Lifesciences; and has received research honoraria from Edwards Lifesciences. Dr Maisano has received grant and/or research institutional support from Abbott, Medtronic, Edwards Lifesciences, Biotronik, Boston Scientific, NVT, Terumo, and Venus Medtech; has received consulting fees and personal and institutional honoraria from Abbott, Medtronic, Edwards Lifesciences, Xeltis, Cardiovalve, Occlufit, Simulands, Mtex, Venus Medtech, Squadra, and Valgen; has received royalty income from and holds intellectual property rights with Edwards Lifesciences; and is a shareholder (including share options) in Magenta, Transseptal Solutions, and 4Tech. Dr Praz has received travel expenses from Edwards Lifesciences, Abbott Vascular, Polares Medical, Medira, and Siemens Healthineers. Dr Kessler has received speaker honoraria from Edwards Lifesciences and Abbott. Dr Kalbacher has received personal fees from Abbott Medical, Edwards Lifesciences, Pi-Cardia, and Medtronic. Dr Rudolph has received research grants from Abbott Medical, Boston Scientific, and Edwards Lifesciences. Dr Iliadis has received consultant fees and travel expenses from Abbott Medical and Edwards Lifesciences. Dr Lurz has received institutional grants from Edwards Lifesciences and honoraria from Innoventrics. Dr Hausleiter has received research grant support and speaker honoraria from Edwards Lifesciences. Dr Sticchi has served on an advisory board for Edwards Lifesciences. Dr Tarantini has received speaker fees for Abbott Vascular and Edwards Lifesciences. Dr Karam has received consultant fees from Edwards Lifesciences, Boston Scientific, and Medtronic; and has received proctor fees from Abbott. All other authors have reported that they have no relationships relevant to the contents of this paper to disclose.

ADDRESS FOR CORRESPONDENCE: Dr Jörg Hausleiter, Marchioninistrasse 15, 81377 München, Germany. E-mail: joerg.hausleiter@med.uni-muenchen.de. X handle: [@j_hausleiter](https://twitter.com/j_hausleiter) OR Dr Lukas Stolz, Marchioninistrasse 15, 81377 München, Germany. E-mail: lukas.stolz@med.uni-muenchen.de. X handle: [@stolz_l](https://twitter.com/stolz_l).

PERSPECTIVES

WHAT IS KNOWN? PH is commonly observed in patients being evaluated for transcatheter tricuspid valve repair.

WHAT IS NEW? PH is an important outcome predictor in patients undergoing transcatheter tricuspid valve repair. There was no significant prognostic difference when comparing patients with pre- vs postcapillary PH.

WHAT IS NEXT? Randomized controlled data in patients are needed to further investigate the benefit of T-TEER beyond medical treatment explicitly in patients with severe PH.

REFERENCES

1. Sorajja P, Whisenant B, Hamid N, et al. Transcatheter repair for patients with tricuspid regurgitation. *N Engl J Med*. 2023;388(20):1833-1842.
2. Stolz L, Doldi PM, Kresoja KP, et al. Applying the TRILUMINATE eligibility criteria to real-world patients receiving tricuspid valve transcatheter edge-to-edge repair. *JACC Cardiovasc Interv*. 2024;17(4):535-548.
3. Karam N, Mehr M, Taramasso M, et al. Value of echocardiographic right ventricular and pulmonary pressure assessment in predicting transcatheter tricuspid repair outcome. *JACC Cardiovasc Interv*. 2020;13:1251-1261.
4. Lurz P, Orban M, Besler C, et al. Clinical characteristics, diagnosis, and risk stratification of

pulmonary hypertension in severe tricuspid regurgitation and implications for transcatheter tricuspid valve repair. *Eur Heart J*. 2020;41(29):2785–2795.

5. Stolz L, Weckbach LT, Karam N, et al. Invasive right ventricular to pulmonary artery coupling in patients undergoing transcatheter edge-to-edge tricuspid valve repair. *JACC Cardiovasc Imaging*. 2023;16:564–566.

6. Stocker TJ, Hertell H, Orban M, et al. Cardio-pulmonary hemodynamic profile predicts mortality after transcatheter tricuspid valve repair in chronic heart failure. *JACC Cardiovasc Interv*. 2021;14:29–38.

7. Lang RM, Badano LP, Mor-Avi V, et al. Recommendations for cardiac chamber quantification by echocardiography in adults: an update from the American Society of Echocardiography and the European Association of Cardiovascular Imaging. *Eur Heart J Cardiovasc Imaging*. 2015;16:233–270.

8. Stolz L, Kresoja KP, von Stein J, et al. Residual tricuspid regurgitation after tricuspid transcatheter edge-to-edge repair: insights into the EuroTR registry. *Eur J Heart Fail*. 2024;26(8):1850–1860.

9. Hahn RT, Thomas JD, Khaliq OK, Cavalcante JL, Praz F, Zoghbi WA. Imaging

assessment of tricuspid regurgitation severity. *JACC Cardiovasc Imaging*. 2019;12:469–490.

10. Humbert M, Kovacs G, Hoeper MM, et al. 2022 ESC/ERS guidelines for the diagnosis and treatment of pulmonary hypertension. *Eur Heart J*. 2022;43:3618–3731.

KEY WORDS postcapillary, precapillary, pulmonary hypertension, SPAP

APPENDIX For supplemental tables and figures as well as a list of EuroTR investigators, please see the online version of this paper.