

Contrasting effects of exotic plant invasions and managed honeybees on plant–flower visitor interactions

Daria Corcos¹  | Andree Cappellari^{1,2}  | Maurizio Mei² | Dino Paniccia³ | Pierfilippo Cerretti²  | Lorenzo Marini¹ 

¹Department of Agronomy, Food, Natural Resources, Animals and Environment (DAFNAE), University of Padua, Legnaro, Padua, Italy

²Department of Biology and Biotechnology “Charles Darwin”, Sapienza University of Rome, Rome, Italy

³Via Colle 13, Frosinone, Italy

Correspondence

Daria Corcos, Department of Agronomy, Food, Natural Resources, Animals and Environment (DAFNAE), University of Padua, Legnaro, Padua, Italy.
Email: daria.corcos@unipd.it

Funding information

STARS Consolidator Grant, Grant/Award Number: STARS-CoG-2017

Editor: Andrew Barnes

Abstract

Aim: To explore how a highly invasive plant species (*Buddleja davidii* Franch.), managed honeybees and flower diversity affected plant–flower visitor interactions over the whole elevational range distribution of the exotic plant.

Location: Italian Alps.

Methods: We selected nine pairs of sites (one invaded and one non-invaded by *B. davidii*) across gradients in honeybee abundance and diversity of flower resources. We observed plant–flower visitor interactions every three weeks, for a total of five surveys covering the full flowering season of *B. davidii* (June–August). We tested how *B. davidii*, honeybee abundance and flowering plant diversity affected network robustness, overlap in flower resource use of wild flower visitors with honeybees and flower visitor specialization. We also tested for an interaction between *B. davidii* presence and honeybee abundance, and tested whether the effects of the two variables changed among insect orders.

Results: *Buddleja davidii* and honeybees had contrasting effects on network robustness and on several species-level metrics. Network robustness increased with increasing honeybee abundance and flower diversity. Increasing honeybee abundance generally increased specialization of lepidopterans and dipterans that tended to switch to less visited plant species, possibly in order to avoid competition. Specialization of flower visitors declined in sites invaded by *B. davidii*, indicating that the invasive plant attracted pollinators, which in turn also visited co-occurring species in the neighbourhood.

Main conclusions: Although increasing honeybee abundance was associated with higher network stability, it also modified plant–flower visitor interactions by forcing species to shift their diet irrespective of floral diversity. The effect was particularly strong for non-bee flower visitors. The consequences of these changes in plant–flower visitor interactions for the reproductive success of flowering plants are still largely unknown.

Corcos and Cappellari contributed equally to the study.

This is an open access article under the terms of the Creative Commons Attribution License, which permits use, distribution and reproduction in any medium, provided the original work is properly cited.

© 2020 The Authors. *Diversity and Distributions* published by John Wiley & Sons Ltd

KEYWORDS

Alien species, *Apis mellifera*, bipartite networks, competition, elevational gradient, network stability, specialization

1 | INTRODUCTION

Mountain ecosystems are considered biodiversity hotspots characterized by a high number of rare and endemic species. Even though mountains are usually less prone to invasions than other ecosystems, there is increasing attention to the expansion of exotic plants in response to climate and land use change (Alexander et al., 2011; Dainese et al., 2017). Although many exotic plants have become naturalized without imposing strong impacts on native plant communities (Timóteo et al., 2018), invasive species with attractive flowers rich in nectar and pollen can compete with native plants for pollinators, ultimately altering the structure of mutualistic networks (Benadi, Hovestadt, Poethke, & Blüthgen, 2014; Grass, Berens, Peter, & Farwig, 2013; Hansen et al., 2018; Maruyama et al., 2016; Russo, Nichol, & Shea, 2016; Stout & Tiedeken, 2017). At the same time, invasions of mass-flowering plants can have positive, long-term effects on pollinator population dynamics by complementing nectar and pollen resources provided by native plants (Albrecht, Ramis, & Traveset, 2016; Davis, Kelly, Maggs, & Stout, 2018; Giovanetti, Ramos, & Máguas, 2018; Russo et al., 2016; Stout & Tiedeken, 2017). Despite this variability, most of the available research has focused on analysing changes in plant–pollinator interactions in invaded vs. uninvaded plant communities without considering potential interactions between exotic plant invasion and other abiotic and biotic drivers of environmental change (González-Varo et al., 2013, but see Grass et al., 2013).

Among biotic drivers, introduced and managed pollinator species can also alter plant–pollinator interactions (Geslin et al., 2017; Magrach, González-Varo, Boiffier, Vilà, & Bartomeus, 2017; Montero-Castaño & Vilà, 2017; Norfolk, Gilbert, & Eichhorn, 2018; Valido, Rodríguez-Rodríguez, & Jordano, 2019). The honeybee (*Apis mellifera* Linnaeus), in particular, is the most widespread pollinator species in natural and agricultural ecosystems (Hung, Kingston, Albrecht, Holway, & Kohn, 2018; Montero-Castaño & Vilà, 2017; Rader et al., 2009). Honeybees usually focus their foraging on the plants providing the most abundant resources (Magrach et al., 2017; Montero-Castaño & Vilà, 2017). On the one hand, being an abundant and generalist species, the honeybee is responsible for most interactions in many plant–pollinator networks, potentially increasing network robustness against pollinator extinctions (Burgos et al., 2007; Geslin et al., 2017). On the other hand, being sometimes a less efficient pollinator, it can also impair pollination service reducing the reproductive success of those plant species highly visited by honeybees (Valido et al., 2019). Moreover, the honeybee is expected to modify the interactions between wild pollinators and plants, increasing potential competition in terms of resource overlap, and so forcing species to

switch to less rewarding resources (Hung, Kingston, Lee, Holway, & Kohn, 2019).

In addition to the anthropogenic drivers described above, natural processes can also influence plant–pollinator interactions. In mountains, the degree of specialization of plant–pollinator networks usually decreases with elevation (Hoiss, Krauss, & Steffan-Dewenter, 2015) due to a more unpredictable and unfavourable environment that narrows resource accessibility at extreme cold temperatures (Adedoja, Kehinde, & Samways, 2018; Johnson & Steiner, 2000). This reduction in network specialization is often linked to the replacement of specialized pollinator guilds (e.g., many wild bees) with groups with wider niche breadth, such as flies and wasps (Benadi et al., 2014; Chacoff et al., 2012; Ramos-Jiliberto et al., 2010). However, elevation and plant diversity are often related in mountains, with native plants showing a hump-shaped relationship with elevation (Guo et al., 2013) and exotic plants typically decreasing with increasing elevation (Alexander et al., 2011; Marini et al., 2013). Plant diversity is expected to play a key role in influencing plant–pollinator interactions as it is related to the availability and heterogeneity of floral resources. For instance, pollinator specialization has been showed to increase with increasing richness of flowering plant species (Ebeling, Klein, & Tschardtke, 2011).

Here, we explored how a highly invasive plant species (*Buddleja davidii* Franch.) impacted plant–flower visitor interactions over its whole elevational range distribution, and whether this effect was modified by managed honeybees and available alternative flower resources. We compared invaded and equivalent non-invaded riparian habitats along a gradient in honeybee abundance and species richness of flower resources by sampling Hymenoptera, Diptera and Lepidoptera pollinators. First, we tested for a potential interaction between *B. davidii* and honeybee in shaping the stability of plant–flower visitor networks. We expected that, in the presence of the highly rewarding invasive plant species, honeybees would focus on *B. davidii*, thus decreasing network stability. In non-invaded sites instead, honeybees would forage on many plant species, consequently resulting in a higher network stability via increased network connectance. Second, we tested how *B. davidii*, honeybee abundance and species richness of flowering plants influenced resource overlap of wild flower visitors with honeybees and their species-level specialization, and whether these effects changed among insect orders. We expected that, in sites invaded by the exotic plant species, a large proportion of flower visitors would concentrate their foraging on the novel resource, consequently increasing their specialization. However, due to their aggressive foraging behaviour, honeybees are expected to influence how other species visit flowers (Hung et al., 2019; Santos et al., 2012), usually diverging wild flower visitors on less abundant resources (Goulson, 2003; Hung et al., 2019; Thomson, 2016) and thus increasing their apparent specialization.

2 | METHODS

2.1 | Study system

Fieldwork was carried out in the mountain areas of Veneto and Trentino-Alto Adige regions (Northern Italy; Figure S1). Climate varies with elevation: it is continental in the lowlands, with warm summers and mild winters, whereas higher elevations are characterized by alpine climate, with cool summers, cold winters and frequent snowfalls. Precipitation is abundant year round, especially at higher elevations (c. 1,200 mm). The area is invaded by the perennial shrub *B. davidii*, which can be found up to 1,200 m a.s.l., especially in disturbed areas such as railways and river banks. It is native of China and Japan and was introduced in Europe in the late 1800s. Self-incompatibility is high (>95%), and the species requires insect cross-pollination for reproduction (Ebeling, Schreiter, Hensen, Durka, & Auge, 2012). The species is highly attractive to pollinators due to its conspicuous inflorescences rich in nectar. Because of their floral morphology (narrow and long corolla tube), species of the genus *Buddleja* are mostly pollinated by butterflies, honeybees and other large bees (Gong et al., 2015). The species exhibits a long flowering period that usually starts in late spring and lasts until late summer.

2.2 | Sampling design

We selected nine pairs of 40 × 20 m sites across the whole elevational range distribution of *B. davidii* (c. 100–1,200 m a.s.l.; Table S1). All the sampled sites were open riparian habitats located along valley bottoms. For each pair, we chose one site invaded and one non-invaded by *B. davidii*. Within each pair, the surrounding landscape of each site was similar in terms of habitat composition (Table S2). In invaded sites, the abundance of *B. davidii* ranged from 2.3% to 38% of all flowering species (mean = 15.9, *SD* = 9.7%), whereas it was completely absent in control sites. We tested for differences in plant species composition (all flowering species excluding *B. davidii*) between invaded and non-invaded sites using the Multiple Response Permutation Procedure (MRPP) test. For MRPP, we used 1,000 permutations and the Jaccard distance matrix. Site pair was chosen as grouping factor. Invaded vs. non-invaded sites did not differ in flowering plant composition (MRPP statistics: $A = -0.015$, significance of $\delta = 0.989$). Visualization of the similarity in plant community composition among sites was obtained by running a NMDS (non-metric multidimensional scaling) analysis on the matrix of cover of flowering plants in each site (Figure S2). The MRPP and NMDS analyses were performed using the functions *mrpp* and *metaMDS* of the *vegan* library (Oksanen et al., 2019) in R version 3.2.3 (R Core Development Team, 2015). With the exception of one pair, the geographical distance between sites within pairs was less than 2 km. This design assured that the two sites within each pair could potentially receive the same visits from managed honeybees, being the distance below the foraging range of this species (Steffan-Dewenter & Kuhn, 2003). Keeping a constant honeybee pressure between

sites within each pair was the only way to account for differences in attractiveness of sites, as a direct manipulation of honeybee hives would have been impossible due to the unpredictable foraging behaviour of honeybees. The density of beehives in the sampling areas is quite high with an average of 5.0 beehives km⁻² (data provided by the National Data Bank of the Zootechnical Registry established by the Ministry of Health at the National Service Centre of the “G. Caporale” Institute of Teramo). We did not opt for a plant removal design (e.g. Lopezaraiza-Mikel, Hayes, Whalley, & Memmott, 2007), due to the large size of *B. davidii* populations involved and the size of *B. davidii* plants (tall shrubs up to 5 m).

2.3 | Surveys of flowering plants and flower visitors

During spring and summer 2018, we observed plant-flower visitor networks in the 18 study sites. Sites were visited approximately every three weeks, for a total of five surveys covering the full flowering season of *B. davidii*. The first survey was conducted in June, while the last survey occurred at the end of August, as the flowering started to cease. Plants were identified in the field when possible, or collected and prepared in a herbarium and identified later. Insect sampling occurred between 09.00 hr and 17.00 hr in dry and sunny conditions with low wind and temperature above 18°C. At each round, each flowering species was observed for a 5-min period, during which all insects touching the reproductive parts of the flowers were counted or collected using a butterfly net (Ø 35 cm). Every 15 min, we paused for 10 min to reduce the level of disturbance and let the flower visitor community recover. Our survey included the most abundant and diverse groups of flower visitors, that is all the bees and sphecids (Hymenoptera), hoverflies, conopids and tachinid flies (Diptera) and butterflies (Lepidoptera). Coleopterans, less than 1% of all observed insects, were not collected and identified. Insects were identified in the field when possible or placed in vials filled with 70% ethanol and sorted and identified in the laboratory to species or morphospecies level. As females of *Bombus terrestris* (Linnaeus) and *Bombus lucorum* (Linnaeus) are often difficult to distinguish, we pooled both species (males and females) as *B. terrestris/lucorum*.

2.4 | Analyses

2.4.1 | Network stability

The network stability was quantified using the robustness index (Burgos et al., 2007; Memmott, Waser, & Price, 2004). Robustness was calculated by removing flower visitor species from the network according to their abundance, from the rarest to the most abundant. Robustness ranges from 0 (highly unstable network) to 1 (highly stable network). It is well known that number of species (i.e. network size) and sampling effort can affect the number of observed interactions in real ecological networks, and thus several measures of network structure (Delmas et al., 2019). This issue

can seriously limit the interpretation of raw network measures and their use for multiple network comparison (Chagnon, 2015). In order to account for network size effect when comparing different networks, the robustness index was standardized using null models as $\Delta\text{Robustness} = \text{observed robustness} - \text{robustness}_{\text{null}}$, where $\text{robustness}_{\text{null}}$ represents the mean robustness value from 1,000 randomized networks obtained using the Patefield, the Vazquez and the swap.web algorithms (Dormann, Fründ, & Gruber, 2008; Patefield, 2012; Schleuning et al., 2012; Vázquez et al., 2007). The three algorithms respectively constraint marginal totals of rows and columns, connectance and both marginal totals and connectance. As standardized robustness values obtained with the different algorithms were highly correlated with each other and with non-standardized ones (Figure S3), we decided to present and discuss only the values obtained with the Vazquez algorithm. Both raw and standardized robustness values were calculated using the *bipartite* package (Dormann et al., 2008).

2.4.2 | Resource overlap and flower visitor species specialization

For each wild flower visitor species within each network, the resource overlap with honeybees was calculated using the Morisita's index (Morisita, 1959) in the *spaa* package (Zhang, 2016). The metric ranges from 0 (no overlap) to 1 (complete overlap).

As species-level specialization can be defined in many different ways, we calculated three metrics that convey complementary information (Maglianesi, Blüthgen, Böhning-Gaese, & Schleuning, 2014): (1) normalized degree, (2) d' and (3) PDI (Paired Difference Index). The normalized degree is one of the simplest specialization indices, based on the presence/absence of flower visitors on plants, and calculated as the standardized ratio between the number of plant species on which a flower visitor species was observed and the total richness of flowering plant species in the network. It ranges from 0 (highly specialized) to 1 (highly generalized). The d' index (standardized Kullback–Leibler distance) additionally takes into account the abundance of flower visitors observed on a plant species, and how much the resource is shared by different flower visitor species (Benadi et al., 2014; Blüthgen et al., 2006). In PDI, the strongest link between a flower visitor species and its most visited plant is contrasted with those over all remaining plant species within the network (Poisot, Canard, Mouquet, & Hochberg, 2012). Both d' and PDI range from 0 (no selectiveness) to 1 (extreme selectiveness). Normalized degree was transformed as the inverse of the index ($1 - \text{normalized degree}$) in order to make it comparable with the other two specialization indices. Defining specialization for rare species may be critical because of the risk of overestimating their specialization (Dorado, Vázquez, Stevani, & Chacoff, 2011; Dormann, 2011). To calculate the species-level specialization indices, we thus removed all singletons and doubletons from the dataset before using the *specieslevel* function in the *bipartite* package (Dormann et al., 2008). Moreover, we computed the three

species-level specialization indices excluding the honeybee from the network. The three specialization metrics were strongly correlated with those calculated with the honeybee in the network, so we present and discuss only the values calculated including the honeybee within the network. However, we run the analyses with both methods and found similar results (Table S3).

2.4.3 | Effect of *B. davidii* and honeybee abundance on network stability

A linear mixed-effects model, with the site pair as random factor to account for spatial dependence in the design, was used to test how network stability (i.e., robustness index) responded to the presence of *B. davidii* (invaded vs. control sites), honeybee abundance and flowering plant species richness. We also included in the model the interaction between *B. davidii* and honeybee abundance. Both abundance of honeybees and species richness of flowering plants were ln-transformed to improve linearity and model residual distribution. The model was fitted using the function *lme* in the *nlme* package (Pinheiro, Bates, DebRoy, Sarkar, & Team, 2017). Interactions were removed using a backward stepwise model selection procedure (p -value $> .05$). Model assumptions were checked using residual diagnostic plots. Effects were represented using partial residual plots using the *visreg* package (Breheny & Burchett, 2017).

2.4.4 | Effect of *B. davidii* and honeybee abundance on resource overlap and flower visitor specialization

Linear mixed-effects models were used to test whether resource overlap and species-level specialization changed in relation to the presence of *B. davidii* (invaded vs. control sites), honeybee abundance and species richness of flowering plants, and whether the effects of *B. davidii* presence and honeybee abundance changed among insect orders (Hymenoptera, Diptera and Lepidoptera). We also tested the interaction between the presence of *B. davidii* and the abundance of honeybees. The response variables were the mean values across species of resource overlap and species specialization indices in each site ($n = 18$), separate for each flower visitor guild (i.e. wild Hymenoptera, Diptera and Lepidoptera). In the case of resource overlap, one pair was removed from the dataset due to honeybee absence in one of the site. We included sampling site nested within the pair as random factor to account for spatial dependence in the design. Resource overlap, normalized degree, honeybee abundance and flowering plant species richness were ln-transformed in order to improve linearity and model residual distribution. Non-significant interactions were removed using a backward stepwise model selection procedure (p -value $> .05$). Model assumptions were checked using residual diagnostic plots. All models were fitted using the function *lme* in the *nlme* package (Pinheiro et al., 2017). Effects were represented using partial residual plots using the *visreg* package (Breheny & Burchett, 2017).

FIGURE 1 Partial residual plots showing the effects of (a) honeybee abundance (ln-transformed) and (b) species richness of flowering plants (ln-transformed) on standardized network robustness. The robustness index was standardized as $\Delta\text{Robustness} = \text{observed robustness} - \text{robustness}_{\text{null}}$, where $\text{robustness}_{\text{null}}$ represents the mean robustness value from 1,000 randomized networks obtained using the Vazquez algorithm (Vázquez et al., 2007)

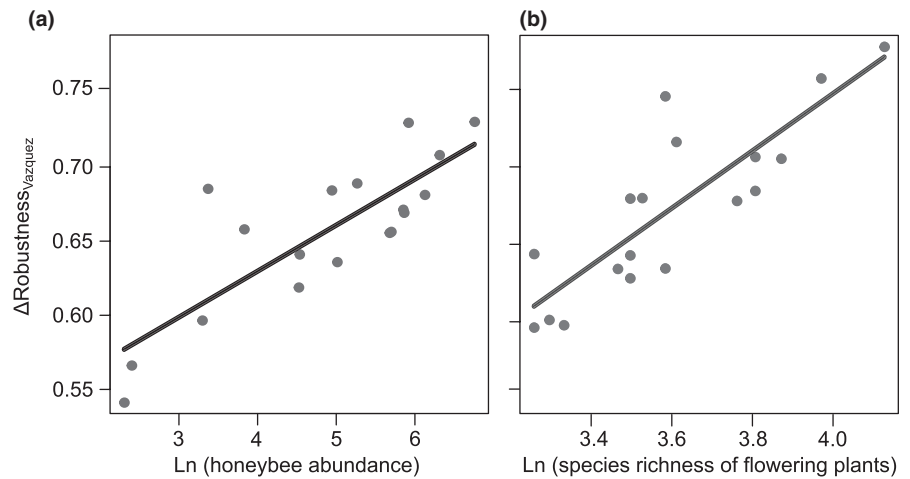


TABLE 1 Results from the linear mixed-effects model testing the effects of explanatory variables on network robustness standardized using the Vazquez algorithm

| | Estimate | SE | df | t | p-value |
|--|----------|-------|----|--------|---------|
| Intercept | -0.152 | 0.167 | 8 | -0.913 | .388 |
| Species richness of flowering plants | 0.185 | 0.049 | 6 | 3.810 | .009 |
| Honeybee | 0.031 | 0.009 | 6 | 3.186 | .019 |
| <i>B. davidii</i> (invaded vs. uninvaded) | 0.016 | 0.019 | 6 | 0.858 | .424 |
| <i>B. davidii</i> (invaded vs. uninvaded) × Honeybee | - | - | - | - | - |

Note: Honeybee abundance and flowering plant species richness were ln-transformed to improve linearity and model residual distribution. Interactions are presented only when significant (p -value < .05).

2.4.5 | Potential collinearity between predictors

The selection of the sites guaranteed statistical independence between honeybee abundance and elevation (Pearson's correlation = -0.207 , p -value = $.409$) and between honeybee abundance and flowering plant species richness (Pearson's correlation = 0.368 , p -value = $.133$), while the species richness of flowering plants significantly increased with elevation (Pearson's correlation = 0.549 , p -value = $.018$). We also measured multicollinearity in our models by computing the variance inflation factors (VIF). The VIF values were all below 1.5, indicating no multicollinearity in our models.

2.4.6 | Elevation versus number of flowering plants

As elevation was correlated with flowering plant species richness and exhibited a narrow range of variation, we only used species richness of flowering plants as explanatory variable in all the models described above. However, in preliminary analyses, we ran all models using elevation instead of number of flowering plants as explanatory variable, and found no effect of elevation on network stability, resource overlap and species specialization. This result may be explained by the relatively low upper limit of *B. davidii* distribution (c.

1,200 m a.s.l.) that implied a narrow temperature gradient between our low and high elevation sites. In temperate mountains such as the European Alps, pollinator communities do not usually exhibit strong species turnover between lowlands and mid-altitudes (c. 1,500 m a.s.l.; Lefebvre, Villemant, Fontaine, & Daugeron, 2018), meaning that foraging preferences and species composition are quite stable along our elevational gradient.

3 | RESULTS

3.1 | General results

Overall, we recorded 9,563 interactions between 370 flower visitor species and 150 flowering plant species (25 plant species were not visited by any insect; Tables S4 and S5), for a total of 1,737 unique plant-flower visitor interactions. Beside *B. davidii*, we found 10 more exotic plant species (Table S5). As often found in real mutualistic networks (Devoto, Bailey, Craze, & Memmott, 2012), we only observed a subset of the expected interactions based on rarefaction curves, but with no evident systematic differences in sampling completeness between sites invaded by *B. davidii* and control sites (Figure S4).

The flower visitor community was composed of 68.1% hymenopterans (172 species, 6,514 individuals), 27.0% dipterans (152 species, 2,585 individuals) and 4.9% lepidopterans (47 species, 464 individuals; Tables S6 and S7). The honeybee was the most abundant flower visitor (Figure S5), accounting for 43% of the total observed individuals, and the third most generalist (collected on 67 plant species), after two hoverfly species, *Eristalis tenax* (Linnaeus) (collected on 73 plant species) and *Sphaerophoria scripta* (Linnaeus) (collected on 70 plant species). The honeybee was found in all sites, except for one, independently from site elevation. Overall, a flower visitor species was observed, on average, on 4.6 plant species (min = 1; max = 73), which in turn received, on average, visits from 11.6 flower visitor species (min = 1; max = 83).

Network robustness standardized using the Vazquez algorithm was positively influenced by both the abundance of honeybees (Figure 1a) and the species richness of flowering plants (Figure 1b), while no effect of *B. davidii* presence was observed (Table 1). The effects were consistent between models using robustness standardized with the Patefield and the swap.web algorithms, while effects were slightly different for the model using the raw robustness values (Table S8). For the latter, the effect of species richness of flowering plants disappeared, while the effect of honeybees was consistent.

The level of resource overlap with honeybees was different among insect orders, with lepidopterans having the highest overlap and dipterans sharing less resources with honeybees (Table 2; Figure 2). No effects of *B. davidii*, honeybee abundance and flowering plant species richness on resource overlap were observed.

The normalized degree specialization index was influenced by the presence of *B. davidii*, insect order and number of flowering plants (Table 3). It was lower in sites invaded by the exotic plant compared with control sites (Figure 3a). Lepidopterans were the most specialized flower visitors, whereas dipterans were the less specialized (Figure 3b). The number of flowering plants had a positive effect on species specialization in terms of normalized degree (Figure 3c). The d' specialization index was only influenced by honeybee abundance, with the effect changing among insect orders (Table 3); that is, d' increased with increasing honeybee abundance for dipterans and lepidopterans, whereas for hymenopterans, it was high irrespective of honeybee abundance (Figure 4). The PDI specialization index was

only positively influenced by the number of flowering plant species (Table 3; Figure 5).

4 | DISCUSSION

The effect of invasive plants on pollinators has been intensively studied, but often in isolation from other biotic and abiotic drivers. Here, for the first time, we tested for the interactive effect of a highly invasive plant species (*B. davidii*) and a competitive managed pollinator species (the honeybee) on plant–flower visitor interactions. We found no interaction between *B. davidii* and honeybee abundance on both network- and species-level metrics. However, the two explanatory variables showed contrasting effects on network stability and flower visitor specialization. While the presence of *B. davidii* decreased flower visitor specialization, honeybee abundance generally increased both network robustness against flower visitor extinctions and species specialization, but the latter with some differences among insect orders.

4.1 | Network stability increased with honeybee abundance and richness of flowering plant species

Super-generalist species such as the honeybee are able to exploit many plant species and thus to potentially increase network robustness against flower visitor extinctions. Although a previous study found that the removal of honeybees from networks did not affect overall stability (Santos et al., 2012), here on the contrary we showed that increasing honeybee abundance increased network stability. Highly stable networks, that is those with a high honeybee abundance, are more robust to the loss of rare flower visitor species, as only a limited number of plant species will not be visited anymore when rare species become extinct. However, as honeybees are sometimes less efficient pollinator than wild species, this increased robustness might not necessarily translate into higher reproductive success of those plants that are visited by honeybees (Magrach et al., 2017; Valido et al., 2019). The positive effect of species richness of flowering plants on network stability was probably related to the

| | Estimate | SE | df | t | p-value |
|---|----------|-------|----|--------|---------|
| Intercept | 1.675 | 2.086 | 30 | 0.803 | .428 |
| Species richness of flowering plants | −0.844 | 0.498 | 5 | −1.696 | .151 |
| Honeybee | −0.069 | 0.114 | 5 | −0.602 | .574 |
| <i>B. davidii</i> (invaded vs. uninvaded) | −0.250 | 0.225 | 5 | −1.110 | .318 |
| Order: Hymenoptera | 0.486 | 0.223 | 30 | 2.183 | .037 |
| Order: Lepidoptera | 0.977 | 0.223 | 30 | 4.388 | <.001 |
| Order: Hymenoptera × Honeybee | − | − | − | − | − |
| Order: Lepidoptera × Honeybee | − | − | − | − | − |

Note: Resource overlap values were ln-transformed to improve linearity and model residual distribution. Interactions are presented only when significant (p -value < .05).

TABLE 2 Results from the linear mixed-effects model testing the effects of explanatory variables on resource overlap of wild flower visitors with honeybees, and how it changes among insect orders (i.e., Hymenoptera, Diptera and Lepidoptera)

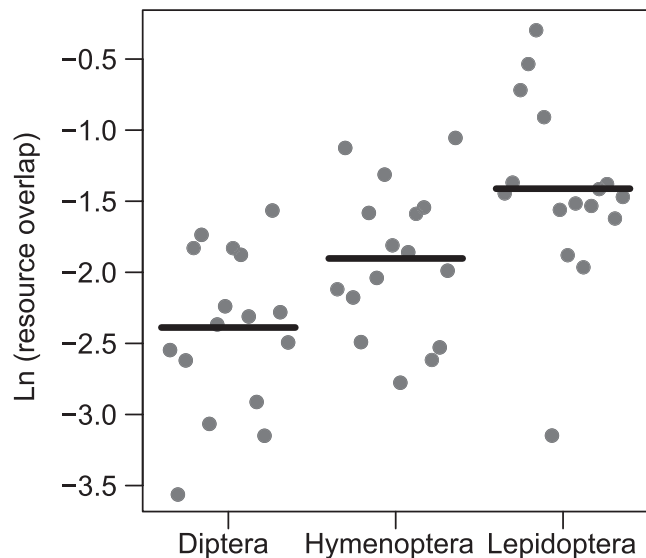


FIGURE 2 Partial residual plot showing the effect of insect order on resource overlap between managed honeybees and wild flower visitors (Ln-transformed)

positive correlation between the number of flowering species and both pollinator richness and abundance; that is, sites rich in plant species hosted more species and individuals that in turn promoted network robustness (Thébault & Fontaine, 2010).

4.2 | Resource overlap between wild flower visitors and honeybees depended on insect order

The interactions between honeybees and wild flower visitors may be explored using the resource overlap index, where high levels of overlap indicate potential competition between wild and managed species (Franco, Aguiar, Ferreira, & De Oliveira-Rebouças, 2009; Paini, 2004). Resource overlap between honeybees and other pollinators has been recorded before (Goulson, 2003), and an increase in honeybee abundance is expected to intensify competition for floral resources between wild and managed bees (Thomson, 2016). Here, we found that resource overlap was higher for lepidopterans than for hymenopterans and dipterans. Despite *B. davidii* being highly attractive for both butterflies and honeybees, the observed effect did not change in invaded vs. uninvaded sites, meaning that the high level of overlap between lepidopterans and honeybees is probably due to other reasons. One hypothesis might be related to the morphology and length of the mouthparts in the three insect orders: while lepidopterans have medium-long proboscises that allow to efficiently exploit flowers with different shapes and corolla depth, most hymenopteran (except for bumblebees) and dipteran species are short-tongued, and usually prefer open flowers (Kevan & Baker, 1983). Therefore, the honeybee, as a medium-tongued bee (c. 6 mm), mostly overlaps with lepidopterans. Consistent with previous studies (Gillespie & Elle, 2018; Steffan-Dewenter & Tschardt, 2000), we found that honeybees did not appear to

share flower resources with both hymenopterans and dipterans. The different mouthpart morphologies of the three orders thus result in a partitioning of flower resources that is independent by honeybee abundance and *B. davidii* presence, as well as the species richness of flowering species. On the other hand, the low level of resource overlap between honeybees and wild hymenopterans and dipterans might also be an effect of competitive exclusion, leading less-competitive wild flower visitors to shift to alternative flower resources.

4.3 | Flower visitor specialization decreased with *B. davidii* presence and increased with increasing honeybee abundance

As invasive plants are often rich in pollen and nectar, they can potentially compete with native plants for pollinators (Dietzsch, Stanley, & Stout, 2011; Flanagan, Mitchell, & Karron, 2010), causing a reduction in the range of consumed resources and thus potentially resulting in increased specialization of pollinator species (Maruyama et al., 2016). Conversely, we found that, in invaded sites, flower visitors used a broader range of plants, reflected by a decrease in their specialization. A possible explanation is that the invasive plant attracts flower visitors, which in turn visit also co-occurring species in the neighbourhood (Molina-Montenegro, Badano, & Cavieres, 2008). For example, some bumblebee species perceive adjacent plants (closer than 6 m) as a single resource, even when they belong to different species (Klinkhamer, de Jong, & Linnebank, 2001). Additionally, when foraging on the preferred species, other flowering species are regularly visited in order to compare their resource levels (Albrecht et al., 2016). *B. davidii*, thanks to its scented and showy inflorescences, is highly attractive and might act as a facilitator for co-occurring native plants. This “magnet species” effect was also recorded in areas invaded by other exotic plant species (Albrecht et al., 2016; Molina-Montenegro et al., 2008).

The attractive effect of exotic plants was previously found to be particularly evident for highly generalist pollinator species, such as the honeybee (Hung et al., 2019; Magrach et al., 2017). Because of its foraging behaviour, this species may force wild pollinators to shift on less abundant resources (Goulson, 2003; Hung et al., 2019; Thomson, 2016). Depending on how flexible other species are in modifying their diet breadth, the effect of honeybee on wild pollinators may be different. Here, we found that an increase in honeybee abundance did not modify the number of visited plant species or how flower visitors were partitioned among flower resources, but affected how the latter were shared by flower visitor species (d'). As honeybee abundance increased, lepidopterans and dipterans tended to switch to less visited plant species, possibly in order to avoid competition (Hung et al., 2019). On the other hand, the effect of honeybee abundance on wild hymenopterans was less evident. It did not lead to a switch on less visited species, but it decreased the evenness of wild hymenopteran visits on floral resources, suggesting that some resources became more preferred.

| | Estimate | SE | df | t | p-value |
|---|----------|-------|----|--------|---------|
| (a) 1-normalized degree | | | | | |
| Intercept | -0.755 | 0.148 | 30 | -5.103 | <.001 |
| Species richness of flowering plants | 0.124 | 0.044 | 6 | 2.819 | .030 |
| Honeybee | 0.010 | 0.009 | 6 | 1.205 | .274 |
| <i>B. davidii</i> (invaded vs. uninvaded) | 0.051 | 0.021 | 6 | 2.423 | .052 |
| Order: Hymenoptera | 0.075 | 0.023 | 30 | 3.245 | .003 |
| Order: Lepidoptera | 0.129 | 0.025 | 30 | 5.164 | <.001 |
| Order: Hymenoptera × Honeybee | - | - | - | - | - |
| Order: Lepidoptera × Honeybee | - | - | - | - | - |
| (b) d' | | | | | |
| Intercept | -0.163 | 0.317 | 28 | -0.514 | .611 |
| Species richness of flowering plants | 0.106 | 0.091 | 6 | 1.160 | .290 |
| Honeybee | 0.046 | 0.025 | 6 | 1.822 | .118 |
| <i>B. davidii</i> (invaded vs. uninvaded) | 0.046 | 0.044 | 6 | 1.064 | .328 |
| Order: Hymenoptera | 0.383 | 0.158 | 28 | 2.423 | .022 |
| Order: Lepidoptera | -0.373 | 0.173 | 28 | -2.152 | .040 |
| Order: Hymenoptera × Honeybee | -0.074 | 0.031 | 28 | -2.375 | .025 |
| Order: Lepidoptera × Honeybee | 0.048 | 0.034 | 28 | 1.394 | .174 |
| (c) PDI | | | | | |
| Intercept | 0.768 | 0.055 | 30 | 13.974 | <.001 |
| Species richness of flowering plants | 0.044 | 0.016 | 6 | 2.692 | .036 |
| Honeybee | 0.003 | 0.003 | 6 | 0.827 | .440 |
| <i>B. davidii</i> (uninvaded vs. invaded) | 0.010 | 0.008 | 6 | 1.303 | .240 |
| Order: Hymenoptera | 0.009 | 0.009 | 30 | 1.006 | .323 |
| Order: Lepidoptera | 0.018 | 0.009 | 30 | 1.944 | .061 |
| Order: Hymenoptera × Honeybee | - | - | - | - | - |
| Order: Lepidoptera × Honeybee | - | - | - | - | - |

Note: Honeybee abundance, flowering plant species richness and normalized degree were ln-transformed to improve linearity and model residual distribution. Interactions are presented only when significant (p -value < .05).

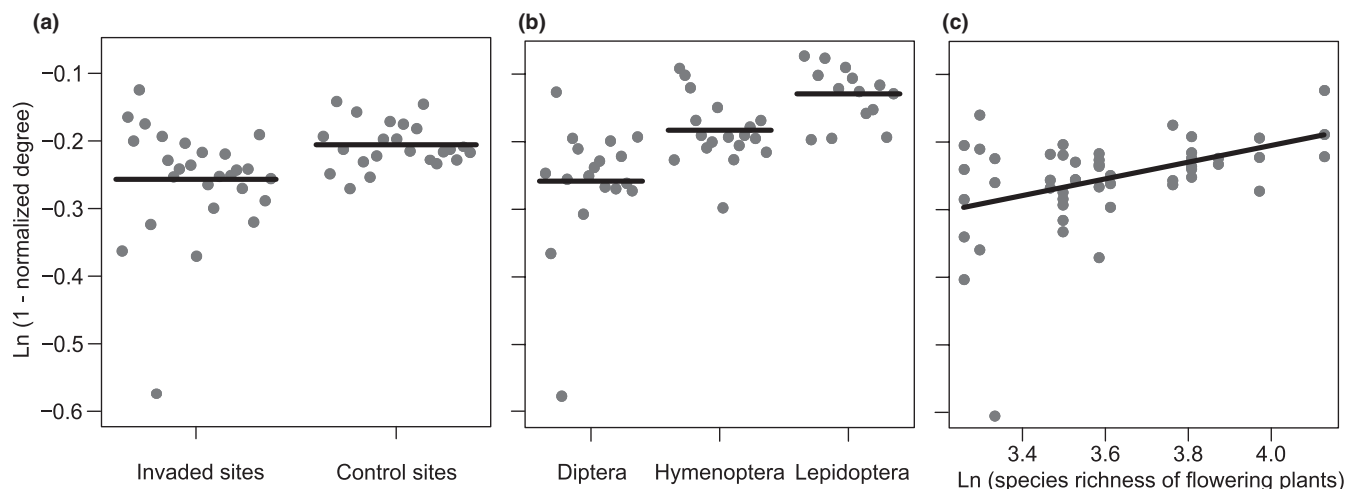


FIGURE 3 Partial residual plots showing the effect of (a) presence of *B. davidii*, (b) insect order and (c) number of flowering plant species (ln-transformed) on normalized degree (ln-transformed). Increasing values of the index correspond to an increase in specialization

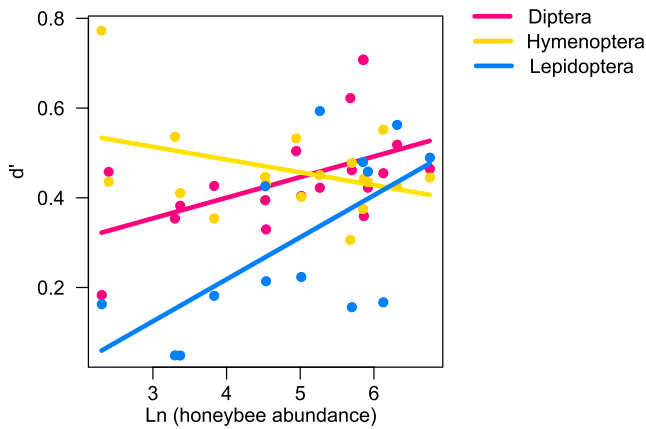


FIGURE 4 Partial residual plot showing the interaction between insect order and honeybee abundance (ln-transformed) on d' (standardized Kullback–Leibler distance). Increasing values of the index correspond to an increase in specialization

Despite the common knowledge of lepidopterans having intermediate level of specialization compared with hymenopterans (more specialized) and dipterans (less specialized) (Benadi et al., 2014; Chacoff et al., 2012), in our study lepidopterans displayed the highest degree of specialization in term number of visited plant species. This is probably due the high attractiveness of some plant species to butterflies, including *B. davidii* (Gong et al., 2015). Indeed, in our study over the 76% of lepidopterans was collected in sites invaded by the exotic species, and the 36% was directly foraging on *B. davidii*. Among the remaining 24% lepidopterans collected in uninvaded sites, over the 33% was collected on *Campanula persicifolia* L. in a single sampling site. The observed high selectivity of lepidopterans is thus likely to depend on the identity of the plant species rather than the ecology of the order.

In contrast to previous studies (Ebeling et al., 2011; Fründ, Linsenmair, & Blüthgen, 2010), we found that the number of flowering plants positively influenced flower visitor specialization in terms of normalized degree and PDI. When the plant community was rich in flower resources, flower visitors reduced their diet breath (i.e. number of resources they visited) and thus increased their specialization, probably because species were more selective choosing more nutrient-rich species compared with situations where only few resources were available. However, d' did not change with increasing flowering plant richness, suggesting that the reduction in diet breath of flower visitors might not result in a decreased resource overlap with other flower visitor species.

5 | CONCLUSIONS

Contrary to our expectations, we found no interactive effect of *B. davidii* and honeybee abundance on plant–flower visitor interactions. However, we showed that the invasive plant and managed honeybees can jointly affect flower visitor communities. Although the honeybee is sometimes considered to be a less efficient pollinator

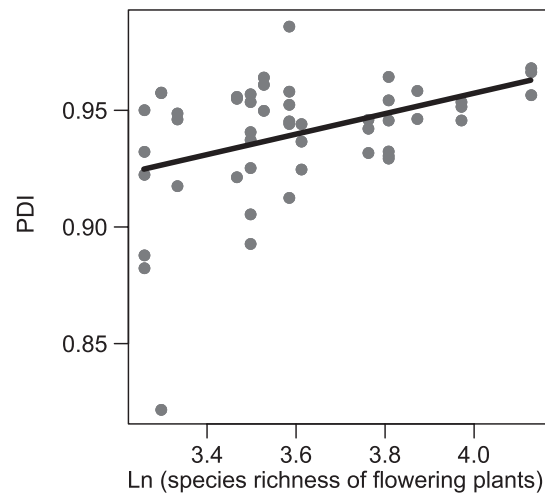


FIGURE 5 Partial residual plot showing the effect of the number of flowering plant species (ln-transformed) on PDI (Paired Difference Index). Increasing values of the index correspond to an increase in specialization

compared with wild bees (Magrach et al., 2017; Valido et al., 2019), its increased abundance might have positive effects on network stability by increasing network robustness against pollinator extinction. However, honeybees also impacted wild flower visitors, causing a shift in their diets and an increase in their specialization. In contrast, the presence of *B. davidii* facilitated the visits on neighbouring plants with inferior rewards, as this invasive plant is an excellent source of nectar that can be exploited by many insect species. The consequences of these changes in mutualistic interactions for the reproductive success of flowering plants are still largely unknown, calling for more research on the long-term effects of honeybee on plant community dynamics.

ACKNOWLEDGEMENTS

The research was supported by the University of Padua STARS Consolidator Grant (STARS-CoG-2017) to LM. We would like to thank Filippo Prosser (Museum of Rovereto, Italy) for helping in the identification of plants and Paolo Paolucci (University of Padua) for the identification of butterflies. We also thank Francesca Zampieri and Valerio Caruso for support in the fieldwork.

PEER REVIEW

The peer review history for this article is available at <https://publons.com/publon/10.1111/ddi.13132>.

DATA AVAILABILITY STATEMENT

Primary data are provided in the main text or in the Appendix S1.

ORCID

Daria Corcos  <https://orcid.org/0000-0002-6771-1769>

Andree Cappellari  <https://orcid.org/0000-0002-6726-1323>

Pierfilippo Cerretti  <https://orcid.org/0000-0002-9204-3352>

Lorenzo Marini  <https://orcid.org/0000-0001-7429-7685>

REFERENCES

- Adedjoja, O. A., Kehinde, T., & Samways, M. J. (2018). Insect-flower interaction networks vary among endemic pollinator taxa over an elevation gradient. *PLoS ONE*, *13*(11), 1–17. <https://doi.org/10.1371/journal.pone.0207453>
- Albrecht, M., Ramis, M. R., & Traveset, A. (2016). Pollinator-mediated impacts of alien invasive plants on the pollination of native plants: the role of spatial scale and distinct behaviour among pollinator guilds. *Biological Invasions*, *18*(7), 1801–1812. <https://doi.org/10.1007/s10530-016-1121-6>
- Alexander, J. M., Kueffer, C., Daehler, C. C., Edwards, P. J., Pauchard, A., Seipel, T., ... Walsh, N. (2011). Assembly of nonnative floras along elevational gradients explained by directional ecological filtering. *Proceedings of the National Academy of Sciences of the United States of America*, *108*(2), 656–661. <https://doi.org/10.1073/pnas.1013136108>
- Benadi, G., Hovestadt, T., Poethke, H.-J., & Blüthgen, N. (2014). Specialization and phenological synchrony of plant–pollinator interactions along an altitudinal gradient. *Journal of Animal Ecology*, *83*(3), 639–650. <https://doi.org/10.1111/1365-2656.12158>
- Blüthgen, N., Menzel, F., & Blüthgen, N. (2006). Measuring specialization in species interaction networks. *BMC Ecology*, *6*, 9. <https://doi.org/10.1186/1472-6785-6-9>
- Breheny, P., & Burchett, W. (2017). Visualization of regression models using visreg. *R Journal*, *9*(2), 56–71. <https://doi.org/10.32614/rj-2017-046>
- Burgos, E., Ceva, H., Perazzo, R. P. J., Devoto, M., Medan, D., Zimmermann, M., & María Delbue, A. (2007). Why nestedness in mutualistic networks? *Journal of Theoretical Biology*, *249*(2), 307–313. <https://doi.org/10.1016/j.jtbi.2007.07.030>
- Chacoff, N. P., Vázquez, D. P., Lomáscolo, S. B., Stevani, E. L., Dorado, J., & Padrón, B. (2012). Evaluating sampling completeness in a desert plant–pollinator network. *Journal of Animal Ecology*, *81*(1), 190–200. <https://doi.org/10.1111/j.1365-2656.2011.01883.x>
- Chagnon, P. L. (2015). Characterizing topology of ecological networks along gradients: The limits of metrics' standardization. *Ecological Complexity*, *22*, 36–39. <https://doi.org/10.1016/j.ecocom.2015.01.004>
- Dainese, M., Aikio, S., Hulme, P. E., Bertolli, A., Prosser, F., & Marini, L. (2017). Human disturbance and upward expansion of plants in a warming climate. *Nature Climate Change*, *7*(8), 577–580. <https://doi.org/10.1038/nclimate3337>
- Davis, E. S., Kelly, R., Maggs, C. A., & Stout, J. C. (2018). Contrasting impacts of highly invasive plant species on flower-visiting insect communities. *Biodiversity and Conservation*, *27*(8), 2069–2085. <https://doi.org/10.1007/s10531-018-1525-y>
- Delmas, E., Besson, M., Brice, M. H., Burkle, L. A., Dalla Riva, G. V., Fortin, M. J., ... Poisot, T. (2019). Analysing ecological networks of species interactions. *Biological Reviews*, *94*(1), 16–36. <https://doi.org/10.1111/brv.12433>
- Devoto, M., Bailey, S., Craze, P., & Memmott, J. (2012). Understanding and planning ecological restoration of plant–pollinator networks. *Ecology Letters*, *15*(4), 319–328. <https://doi.org/10.1111/j.1461-0248.2012.01740.x>
- Dietzsch, A. C., Stanley, D. A., & Stout, J. C. (2011). Relative abundance of an invasive alien plant affects native pollination processes. *Oecologia*, *167*(2), 469–479. <https://doi.org/10.1007/s00442-011-1987-z>
- Dorado, J., Vázquez, D. P., Stevani, E. L., & Chacoff, N. P. (2011). Rareness and specialization in plant–pollinator networks. *Ecology*, *92*(1), 19–25. <https://doi.org/10.1890/10-0794.1>
- Dormann, C. F. (2011). How to be a specialist? Quantifying specialisation in pollination networks. *Network Biology*, *1*(1), 1–20.
- Dormann, C. F., Fründ, J., & Gruber, B. (2008). Introducing the bipartite Package: Analysing Ecological Networks. *R News*, *8*, 8–11.
- Ebeling, A., Klein, A.-M., & Tschardt, T. (2011). Plant–flower visitor interaction webs: Temporal stability and pollinator specialization increases along an experimental plant diversity gradient. *Basic and Applied Ecology*, *12*(4), 300–309. <https://doi.org/10.1016/j.baae.2011.04.005>
- Ebeling, S., Schreiter, S., Hensen, I., Durka, W., & Auge, H. (2012). Outcrossing breeding system does not compromise invasiveness in *Buddleja davidii*. *Flora*, *207*(12), 843–848. <https://doi.org/10.1016/j.flora.2012.09.010>
- Flanagan, R. J., Mitchell, R. J., & Karron, J. D. (2010). Increased relative abundance of an invasive competitor for pollination, *Lythrum salicaria*, reduces seed number in *Mimulus ringens*. *Oecologia*, *164*(2), 445–454. <https://doi.org/10.1007/s00442-010-1693-2>
- Franco, E. L., Aguiar, C. M. L., Ferreira, V. S., & De Oliveira-Rebouças, P. L. (2009). Plant use and niche overlap between the introduced honey bee (*Apis mellifera*) and the native bumblebee (*Bombus atratus*) (Hymenoptera: Apidae) in an Area of tropical mountain vegetation in northeastern Brazil. *Sociobiology*, *53*(1), 141–150.
- Fründ, J., Linsenmair, K. E., & Blüthgen, N. (2010). Pollinator diversity and specialization in relation to flower diversity. *Oikos*, *119*(10), 1581–1590. <https://doi.org/10.1111/j.1600-0706.2010.18450.x>
- Geslin, B., Gauzens, B., Baude, M., Dajoz, I., Fontaine, C., Henry, M., ... Vereecken, N. J. (2017). Massively introduced managed species and their consequences for plant–pollinator interactions. *Advances in Ecological Research*, *57*, 147–199. <https://doi.org/10.1016/bs.aecr.2016.10.007>
- Gillespie, S., & Elle, E. (2018). Non-native plants affect generalist pollinator diet overlap and foraging behavior indirectly, via impacts on native plant abundance. *Biological Invasions*, *20*(11), 3179–3191. <https://doi.org/10.1007/s10530-018-1767-3>
- Giovanetti, M., Ramos, M., & Máguas, C. (2018). Why so many flowers? A preliminary assessment of mixed pollination strategy enhancing sexual reproduction of the invasive *Acacia longifolia* in Portugal. *Web Ecology*, *18*(1), 47–54. <https://doi.org/10.5194/we-18-47-2018>
- Gong, W. C., Chen, G., Vereecken, N. J., Dunn, B. L., Ma, Y. P., & Sun, W. B. (2015). Floral scent composition predicts bee pollination system in five butterfly bush (*Buddleja*, Scrophulariaceae) species. *Plant Biology*, *17*(1), 245–255. <https://doi.org/10.1111/plb.12176>
- González-Varo, J. P., Biesmeijer, J. C., Bommarco, R., Potts, S. G., Schweiger, O., Smith, H. G., ... Vilà, M. (2013). Combined effects of global change pressures on animal-mediated pollination. *Trends in Ecology & Evolution*, *28*(9), 524–530. <https://doi.org/10.1016/j.tree.2013.05.008>
- Goulson, D. (2003). Effects of introduced bees on native ecosystems. *Annual Review of Ecology, Evolution, and Systematics*, *34*(1), 1–26. <https://doi.org/10.1146/annurev.ecolsys.34.011802.132355>
- Grass, I., Berens, D. G., Peter, F., & Farwig, N. (2013). Additive effects of exotic plant abundance and land-use intensity on plant–pollinator interactions. *Oecologia*, *173*(3), 913–923. <https://doi.org/10.1007/s00442-013-2688-6>
- Guo, Q., Kelt, D. A., Sun, Z., Liu, H., Hu, L., Ren, H., & Wen, J. (2013). Global variation in elevational diversity patterns. *Scientific Reports*, *3*(1), 3007. <https://doi.org/10.1038/srep03007>
- Hansen, S., Roets, F., Seymour, C. L., Thébault, E., van Veen, F. J. F., & Pryke, J. S. (2018). Alien plants have greater impact than habitat fragmentation on native insect flower visitation networks. *Diversity and Distributions*, *24*(1), 58–68. <https://doi.org/10.1111/ddi.12656>
- Hoiss, B., Krauss, J., & Steffan-Dewenter, I. (2015). Interactive effects of elevation, species richness and extreme climatic events on plant–pollinator networks. *Global Change Biology*, *21*(11), 4086–4097. <https://doi.org/10.1111/gcb.12968>
- Hung, K.-L. J., Kingston, J. M., Albrecht, M., Holway, D. A., & Kohn, J. R. (2018). The worldwide importance of honey bees as pollinators in natural habitats. *Proceedings of the Royal Society B: Biological Sciences*, *285*(1870), 20172140. <https://doi.org/10.1098/rspb.2017.2140>

- Hung, K.-L. J., Kingston, J. M., Lee, A., Holway, D. A., & Kohn, J. R. (2019). Non-native honey bees disproportionately dominate the most abundant floral resources in a biodiversity hotspot. *Proceedings of the Royal Society B: Biological Sciences*, 286(1897), 20182901. <https://doi.org/10.1098/rspb.2018.2901>
- Johnson, S. D., & Steiner, K. E. (2000). Generalization versus specialization in plant pollination systems. *Trends in Ecology & Evolution*, 15(4), 140–143. [https://doi.org/10.1016/S0169-5347\(99\)01811-X](https://doi.org/10.1016/S0169-5347(99)01811-X)
- Kevan, P. G., & Baker, H. G. (1983). Insects as flower visitors and pollinators. *Annual Review of Entomology*, 28(1), 407–453. <https://doi.org/10.1146/annurev.en.28.010183.002203>
- Klinkhamer, P. G. L., de Jong, T. J., & Linnebank, L. A. (2001). Small-scale spatial patterns determine ecological relationships: an experimental example using nectar production rates. *Ecology Letters*, 4(6), 559–567. <https://doi.org/10.1046/j.1461-0248.2001.00267.x>
- Lefebvre, V., Villemant, C., Fontaine, C., & Daugeron, C. (2018). Altitudinal, temporal and trophic partitioning of flower-visitors in Alpine communities. *Scientific Reports*, 8(1), 4706. <https://doi.org/10.1038/s41598-018-23210-y>
- Lopezariza-Mikel, M. E., Hayes, R. B., Whalley, M. R., & Memmott, J. (2007). The impact of an alien plant on a native plant–pollinator network: An experimental approach. *Ecology Letters*, 10(7), 539–550. <https://doi.org/10.1111/j.1461-0248.2007.01055.x>
- Maglianesi, M. A., Blüthgen, N., Böhning-Gaese, K., & Schleuning, M. (2014). Morphological traits determine specialization and resource use in plant–hummingbird networks in the neotropics. *Ecology*, 95(12), 3325–3334. <https://doi.org/10.1890/13-2261.1>
- Magrath, A., González-Varo, J. P., Boiffier, M., Vilà, M., & Bartomeus, I. (2017). Honeybee spillover reshuffles pollinator diets and affects plant reproductive success. *Nature Ecology and Evolution*, 1(9), 1299–1307. <https://doi.org/10.1038/s41559-017-0249-9>
- Marini, L., Bertolli, A., Bona, E., Federici, G., Martini, F., Prosser, F., & Bommarco, R. (2013). Beta-diversity patterns elucidate mechanisms of alien plant invasion in mountains. *Global Ecology and Biogeography*, 22(4), 450–460. <https://doi.org/10.1111/geb.12006>
- Maruyama, P. K., Vizenin-Bugoni, J., Sonne, J., Martín González, A. M., Schleuning, M., Araujo, A. C., ... Dalsgaard, B. (2016). The integration of alien plants in mutualistic plant–hummingbird networks across the Americas: The importance of species traits and insularity. *Diversity and Distributions*, 22(6), 672–681. <https://doi.org/10.1111/ddi.12434>
- Memmott, J., Waser, N. M., & Price, M. V. (2004). Tolerance of pollination networks to species extinctions. *Proceedings of the Royal Society of London. Series B: Biological Sciences*, 271(1557), 2605–2611. <https://doi.org/10.1098/rspb.2004.2909>
- Molina-Montenegro, M. A., Badano, E. I., & Caviries, L. A. (2008). Positive interactions among plant species for pollinator service: assessing the ‘magnet species’ concept with invasive species. *Oikos*, 117(12), 1833–1839. <https://doi.org/10.1111/j.0030-1299.2008.16896.x>
- Montero-Castaño, A., & Vilà, M. (2017). Influence of the honeybee and trait similarity on the effect of a non-native plant on pollination and network rewiring. *Functional Ecology*, 31(1), 142–152. <https://doi.org/10.1111/1365-2435.12712>
- Morisita, M. (1959). Measuring of the dispersion of individuals and analysis of the distributional patterns. *Memoires of the Faculty of Science, Kyushu University. Series E. Biology*, 2, 215–235.
- Norfolk, O., Gilbert, F., & Eichhorn, M. P. (2018). Alien honeybees increase pollination risks for range-restricted plants. *Diversity and Distributions*, 24(5), 705–713. <https://doi.org/10.1111/ddi.12715>
- Oksanen, J., Blanchet, F. G., Friendly, M., Kindt, R., Legendre, P., Mcglinn, D., ... Wagner, H. (2019). *Package “vegan.” Community Ecology Package*.
- Paini, D. R. (2004). Impact of the introduced honey bee (*Apis mellifera*) (Hymenoptera: Apidae) on native bees: A review. *Austral Ecology*, 29(4), 399–407. <https://doi.org/10.1111/j.1442-9993.2004.01376.x>
- Patefield, W. (2012). Algorithm AS 159: An Efficient Method of Generating Random $R \times C$ tables with given row and column totals. *Journal of the Royal Statistical Society. Series C (Applied Statistics)*, 30(1), 91–97.
- Pinheiro, J., Bates, D., DebRoy, S., Sarkar, D., & R Core Team (2017). *nlme: Linear and Nonlinear Mixed Effects Models. R Package Version 3.1-131*. Retrieved from <https://cran.r-project.org/package=nlme>
- Poisot, T., Canard, E., Mouquet, N., & Hochberg, M. E. (2012). A comparative study of ecological specialization estimators. *Methods in Ecology and Evolution*, 3(3), 537–544. <https://doi.org/10.1111/j.2041-210X.2011.00174.x>
- R Development Core Team (2015). *R: A language and environment for statistical computing*. Vienna, Austria: R Foundation for Statistical Computing. Retrieved from <http://www.r-project.org/>
- Rader, R., Howlett, B. G., Cunningham, S. A., Westcott, D. A., Newstrom-Lloyd, L. E., Walker, M. K., ... Edwards, W. (2009). Alternative pollinator taxa are equally efficient but not as effective as the honeybee in a mass flowering crop. *Journal of Applied Ecology*, 46(5), 1080–1087. <https://doi.org/10.1111/j.1365-2664.2009.01700.x>
- Ramos-Jiliberto, R., Dominguez, D., Espinoza, C., López, G., Valdovinos, F. S., Bustamante, R. O., & Medel, R. (2010). Topological change of Andean plant–pollinator networks along an altitudinal gradient. *Ecological Complexity*, 7(1), 86–90. <https://doi.org/10.1016/j.ecocom.2009.06.001>
- Russo, L., Nichol, C., & Shea, K. (2016). Pollinator floral provisioning by a plant invader: Quantifying beneficial effects of detrimental species. *Diversity and Distributions*, 22(2), 189–198. <https://doi.org/10.1111/ddi.12397>
- Santos, G. M., Aguiar, C. M. L., Genini, J., Martins, C. F., Zanella, F. C. V., & Mello, M. A. R. (2012). Invasive Africanized honeybees change the structure of native pollination networks in Brazil. *Biological Invasions*, 14(11), 2369–2378. <https://doi.org/10.1007/s10530-012-0235-8>
- Schleuning, M., Fründ, J., Klein, A.-M., Abrahamczyk, S., Alarcón, R., Albrecht, M., ... Blüthgen, N. (2012). Specialization of mutualistic interaction networks decreases toward tropical latitudes. *Current Biology*, 22(20), 1925–1931. <https://doi.org/10.1016/j.cub.2012.08.015>
- Steffan-Dewenter, I., & Kuhn, A. (2003). Honeybee foraging in differentially structured landscapes. *Proceedings of the Royal Society of London. Series B: Biological Sciences*, 270(1515), 569–575. <https://doi.org/10.1098/rspb.2002.2292>
- Steffan-Dewenter, I., & Tschantke, T. (2000). Resource overlap and possible competition between honey bees and wild bees in Central Europe. *Oecologia*, 122(2), 288–296.
- Stout, J. C., & Tiedeken, E. J. (2017). Direct interactions between invasive plants and native pollinators: evidence, impacts and approaches. *Functional Ecology*, 31(1), 38–46. <https://doi.org/10.1111/1365-2435.12751>
- Thébault, E., & Fontaine, C. (2010). Stability of ecological communities and the architecture of mutualistic and trophic networks. *Science*, 329(5993), 853–856. <https://doi.org/10.1126/science.1188321>
- Thomson, D. M. (2016). Local bumble bee decline linked to recovery of honey bees, drought effects on floral resources. *Ecology Letters*, 19(10), 1247–1255. <https://doi.org/10.1111/ele.12659>
- Timóteo, S., O'Connor, C. J., López-Núñez, F. A., Costa, J. M., Gouveia, A. C., & Heleno, R. H. (2018). Pollination networks from natural and anthropogenic-novel communities show high structural similarity. *Oecologia*, 188(4), 1155–1165. <https://doi.org/10.1007/s00442-018-4281-5>
- Valido, A., Rodríguez-Rodríguez, M. C., & Jordano, P. (2019). Honeybees disrupt the structure and functionality of plant–pollinator networks. *Scientific Reports*, 9(1), 4711. <https://doi.org/10.1038/s41598-019-41271-5>
- Vázquez, D. P., Melián, C. J., Williams, N. M., Blüthgen, N., Krasnov, B. R., & Poulin, R. (2007). Species abundance and asymmetric interaction strength in ecological networks. *Oikos*, 116(7), 1120–1127. <https://doi.org/10.1111/j.2007.0030-1299.15828.x>
- Zhang, J. (2016). *Package “spaa”: SPecies Association Analysis. R Package Version 0.2.2*. Retrieved from <https://CRAN.R-Project.Org/Packa ge=spaa>

BIOSKETCH

This work is the result of a collaboration between researchers from the University of Padua and the University of Rome. The group in Padua performed research on applied ecology and global change, while the team in Rome focused on insect systematics, phylogeny and evolution.

Author contributions: L.M. and D.C. conceived the ideas and designed the sampling; D.C. and A.C. collected the field data; A.C., M.M., D.P. and P.C. identified insects; D.C., A.C. and L.M. analysed the data; D.C. and A.C. led the writing of the manuscript. All authors contributed critically to the drafts and gave final approval for publication.

SUPPORTING INFORMATION

Additional supporting information may be found online in the Supporting Information section.

How to cite this article: Corcos D, Cappellari A, Mei M, Paniccia D, Cerretti P, Marini L. Contrasting effects of exotic plant invasions and managed honeybees on plant–flower visitor interactions. *Divers Distrib.* 2020;26:1397–1408. <https://doi.org/10.1111/ddi.13132>