



ORIGINAL ARTICLE

Open Access



# Difference in composition and functional analysis of bacterial communities between *Mytilus galloprovincialis* gills and surrounding water in a brackish inshore bay, analyzed by 16S rDNA multi-amplicon sequencing

Giulia Zardinoni<sup>1\*</sup> , Saptarathi Deb<sup>1</sup>, Samathmika Ravi<sup>1</sup>, Lucia Giagnoni<sup>2</sup>, Piergiorgio Fumelli<sup>3</sup>, Alessandra Tondello<sup>1</sup>, Mauro Dacasto<sup>4</sup>, Andrea Squartini<sup>1</sup>, Carlo Spanu<sup>2</sup>, Angela Trocino<sup>1,4</sup> and Piergiorgio Stevanato<sup>1</sup>

## Abstract

**Background** Lagoons are important natural systems, with attractive favorable conditions for aquaculture production, such as shellfish cultivation. Despite their socio-economic relevance for human activity, information on the microbial diversity, community composition, and putative functions of gill-associated microbiota and seawater is still limited, particularly as regards the extent of specific taxa enrichment within the gills and the relative effects of the temporal and spatial variables. In this study, we used a 16S rDNA multi-amplicon sequencing approach using an Ion GeneStudio S5 System and a function prediction method (Functional Annotation of Prokaryotic Taxa (FAPROTAX), to inspect the springtime dynamics of microbial communities and their inferred metabolic features in an Adriatic lagoon (Po Delta, Italy).

**Results** Mussels and surrounding seawater were sampled in two rearing areas three times between April and June 2021. Sequencing results showed significant ( $p \leq 0.05$ ) differences in bacterial community composition and diversity between gills and seawater. Gills were dominated by the *Methylobacterium-Methylorubrum* and *Burkholderia-Caballeronia-Paraburkholderia* genera, while in seawater samples *Izama plasma*, *Planktomarina*, and *Candidatus Aquiluna* were detected as being dominant. The microbiota composition did not differ significantly between the two rearing areas. The sampling time, although limited to a 3-month timeframe, instead revealed a structural variation of the bacterial profile both in gills and seawater for alpha and beta diversities respectively. The functional prediction analysis highlighted an overexpression of human gut-associated bacteria in relation to the season-related increase in seawater temperature.

\*Correspondence:

Giulia Zardinoni

giulia.zardinoni@studenti.unipd.it

Full list of author information is available at the end of the article



© The Author(s) 2024. **Open Access** This article is licensed under a Creative Commons Attribution 4.0 International License, which permits use, sharing, adaptation, distribution and reproduction in any medium or format, as long as you give appropriate credit to the original author(s) and the source, provide a link to the Creative Commons licence, and indicate if changes were made. The images or other third party material in this article are included in the article's Creative Commons licence, unless indicated otherwise in a credit line to the material. If material is not included in the article's Creative Commons licence and your intended use is not permitted by statutory regulation or exceeds the permitted use, you will need to obtain permission directly from the copyright holder. To view a copy of this licence, visit <http://creativecommons.org/licenses/by/4.0/>.

**Conclusions** These findings enhance our understanding of the differences between gill-associated and seawater microbiota composition and provide novel insights into the functions carried out by bacteria inhabiting these niches, as well as on the key host-symbiont relationships of bivalves in lagoon environments.

**Keywords** Gills, Mussels, 16s rDNA amplicon sequencing, Bacterial profile, Microbiota-environment interactions

## Background

Mussels (*Mytilus galloprovincialis*; Lamarck, 1819) are animal feeders able to filter large volumes of water through their gills to satisfy their food requirements (Wathsala et al. 2021). During this powerful filter-feeding activity, organic particles such as algae, bacteria, viruses, inorganic contaminants, and detritus can be retained in animal tissues (Orban et al. 2002; Vernocchi et al. 2007). Indeed, mussels have long been utilized in the biomonitoring of environmental quality (Gagné et al. 2019). Preliminary studies suggest that despite the environment influencing mollusk bacterial composition, the process of selective filtering determines a tissue-specific microbial profile (Franzellitti et al. 2016; Freitas et al. 2019; Musella et al. 2020; Pathirana et al. 2019; Schoinas et al. 2023; Trabal Fernandez et al. 2014). These bacterial communities are assembled progressively from cells ingested through gills and can potentially act in metabolite synthesis and/or excretion, osmoregulation, and invasion success, playing an important role in the processing of nutrients and defense against pathogens (Jahnke et al. 1995). However, despite its importance, knowledge of the mussels' microbiota is still limited.

In particular, the microbiota of bivalve gills is considered autochthonous, due to the higher presence of symbiotic bacteria than in other organs (Balbi et al. 2020; Cappello et al. 2015).

Examples of symbioses include *Campylobacteria* and *Epsilonbacteria* in *Bathymodiolus platifrons* bivalves (Lin et al. 2023), sulfur-oxidizing bacteria of the genus *Beggiatoa* (Imhof et al. 2003), and the *Methylomonaceae* group (Lin et al. 2021). These symbionts can provide mussels with probiotic functions, with final consequences on animals' health and productivity (Ikeda-Ohtsubo et al. 2018; Simon et al. 2019). Consequently, the gill microbiota should be considered an important target for understanding mussel physiology and management (Lokmer et al. 2016; Roterman et al. 2015; Zurel et al. 2011).

In Italy, the Po River Delta system is one of the most productive areas of the Mediterranean with a famous aquaculture activity (Zoppin et al. 2020). Among farming areas, the Scardovari lagoon presents environmentally favorable conditions for the development of thriving mussel farming (Caroppo et al. 2018; Cibic et al. 2019). The area (32 km<sup>2</sup>) is characterized by low water levels with a constant change linked to the cycles of tides and

a significant supply of fresh water and nutrients. These delta areas are subjected to different stress factors of natural and anthropogenic origin that can influence and modify the microbial community composition of the surrounding environment and mussels, with possibly severe consequences for the lagoon ecosystem and seafood production (Franzo et al. 2019; Mascolo et al. 2019).

For this reason, the study of bacteria profiles of mussels and seawater in relevant geographic locations could cast some light on their status and dynamics.

The aim of this project was to explore the microbiota of *M. galloprovincialis* at the gills' level and in comparison to that of their surrounding water in samples collected at Scardovari lagoon, and their temporal succession, to provide basic knowledge on the respective microbial community structures, and the possible presence of specific bacteria hosted in the animal tissues. Moreover, by characterizing the bacterial content in two different areas of the lagoon (north-west and south-east) between April and June 2021, a further aim was to better understand the successional prokaryotic abundance in gill tissues with respect to the seawater reservoir source also as a function of the seasonal environmental changes of physical and chemical parameters. To explore as deeply possible the complexity of microbial communities, we used the Ion GeneStudio S5 technology to simultaneously amplify seven hypervariable regions of the bacterial 16S rRNA gene. Indeed, all the regions of this target gene are considered significantly necessary to obtain an accurate estimation of taxonomic diversity (Claesson et al. 2010; Liu et al. 2008). The working hypotheses under investigation, yet unexplored by prior studies, were the following: (1) the selective fractionation that leads to a community structure in gills which differs from the surrounding water source varies during the season and (2) the temporal effects are hierarchically more effective than spatial ones in shaping community composition of either water or gills. As innovative elements of the present approach, in the first instance, no studies have dealt with the time-related variation of mussel gills microbiota through a consecutive monthly timeframe during the transition from spring to summer, and second, our report addressed the difference between the animal tissue and its surrounding habitat to assess overlaps, enrichment, and divergences in the comparison of the two connected microbiomes of seawater and gills.

## Results

### Physical-chemical seawater parameters

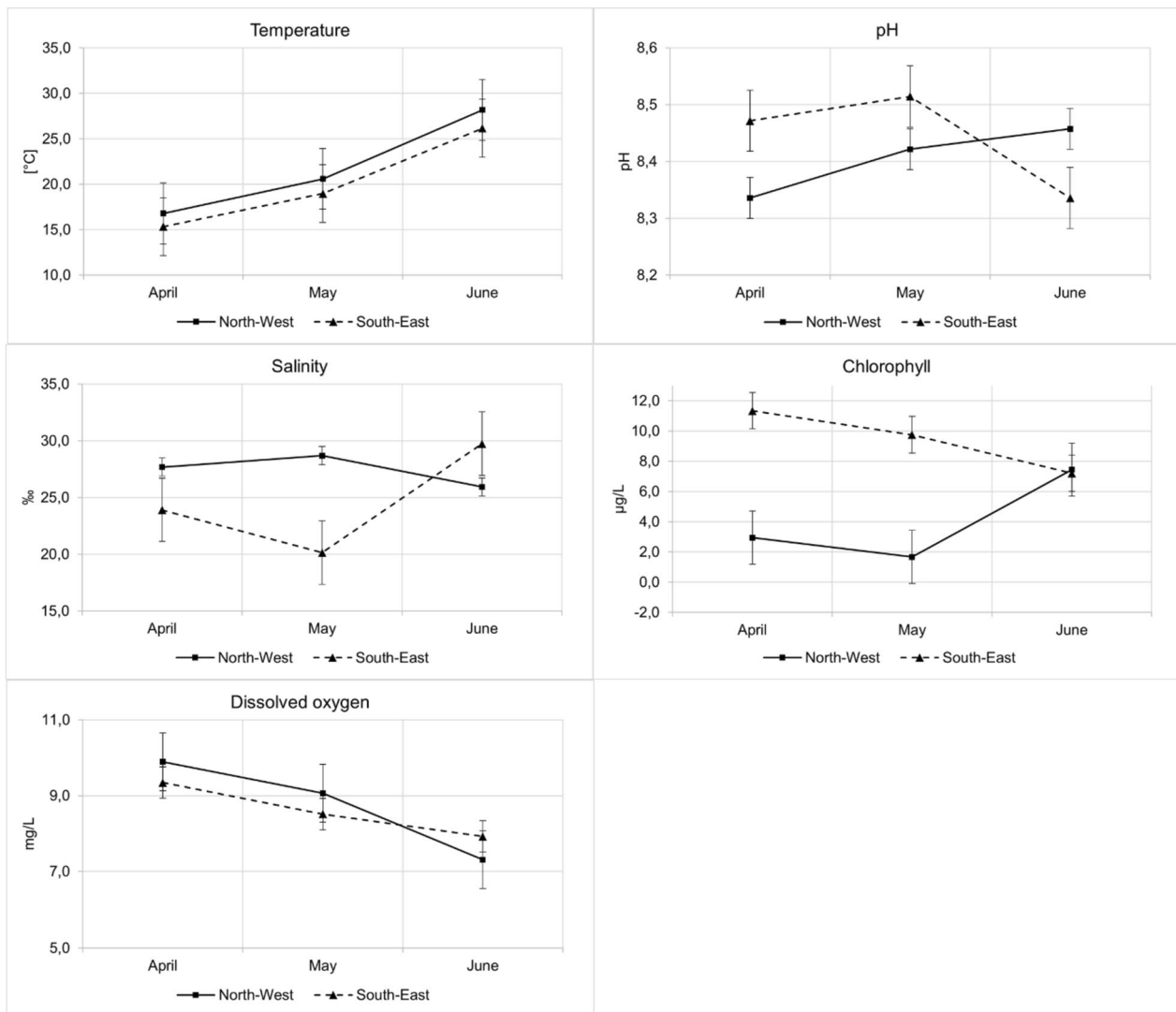
Spatial and temporal dynamics of the physical-chemical parameters are shown in Fig. 1. Statistical differences between the northwest and southeast of the lagoon were detected for temperature and salinity at all sampling times (Supplementary Table S1). The chlorophyll was significantly higher ( $p \leq 0.05$ ) in the southeast compared to the northwest site in April and May. As regards the pH, statistical differences between the two areas were found during April and June (Supplementary Table S1). No differences were found for the dissolved oxygen at any of the sampling times.

Looking at the April–June temporal dynamics, in the northeast area the temperature, salinity, dissolved

oxygen, and chlorophyll showed statistically significant differences across the three sampling times ( $p \leq 0.05$ ) (Supplementary Table S2).

The highest temperature and chlorophyll values were detected in June, with a mean value of 28.2 °C and 7.4 µg/l, respectively. Salinity reached its maximum value in May, with a mean of 28.7‰. Different dissolved oxygen concentrations were also found during the sampling period, with the highest value in April. No differences were found for the pH parameter in relation to time.

In the southwest area, the temperature and salinity were higher in June with respect to April and May (Table S2). pH reached its minimum in June, with a mean of 8.3. Statistical differences were also detected



**Fig. 1** Dynamics of the monitored physical-chemical parameters. Bars indicate standard errors

for dissolved oxygen and chlorophyll, with the highest values during April.

To further explore the relative role of the physical-chemical parameters in shaping the bacterial communities redundancy analysis (RDA) was used, the results of which are shown in Supplementary Figure S2. Redundancy analysis (Legendre & Legendre 1998) takes as input a site/data matrix where each site has given values for one or more environmental/explanatory variables as well as a number of response (dependent) variables. The strongest role was displayed by temperature, followed by salinity, while pH had a minor incidence. The positions of dissolved oxygen and chlorophyll resulted in between.

#### Microbiota of *Mytilus galloprovincialis* and the surrounding water

A total of 5,219,296 reads were obtained from the sequencing. The mean number of reads per sample was  $175,872 \pm 116,536$ . As previously mentioned, any samples which failed to satisfy customarily sufficient reads abundance were removed. Specifically, two-gill samples (one from April in the northwest area and one from April in the southeast area) and one seawater sample (from May in the northwest area) were excluded from the dataset. High-quality reads yielded 19,078 amplified sequence variants (ASVs).

The overall microbiota profile of *M. galloprovincialis* gills is represented in Fig. 2. The phylum *Proteobacteria* (88%) was the most abundant. The subdominant phyla were *Cyanobacteria* (8%) and *Actinobacteria* (2%). Further phyla were represented by *Firmicutes* and *Bacteroidetes* (both with an abundance of ~1%). In particular, *Proteobacteria* were represented especially by the classes of *Alphaproteobacteria* (60%) and *Gammaproteobacteria* (28%). The families of *Sphingomonadaceae* (31%) and *Beijerinckiaceae* (28%) were mostly represented in *Alphaproteobacteria*, and *Sphingomonas* and *Methylobacterium-Methylorubrum* were the dominant genera. The class of *Gammaproteobacteria* was represented by the family *Burkholderiaceae* (26%), and specifically, the *Burkholderia-Caballeronia-Paraburkholderia* genera complex was highly featured. Other minor genera from different families (<1%), including *Dyella*, *Nocardioides*, *Brevundimonas*, *Pseudomonas*, and *Staphylococcus*, were detected.

As for seawater, *Proteobacteria* (48%) was the dominant phylum (Fig. 2). The subdominant phyla were *Bacteroidetes* (17%), *Actinobacteria* (10%), *Firmicutes* (9%), *Cyanobacteria* (7%), *Desulfobacteriota* (2%), and *Verrucomicrobiota* (2%). *Proteobacteria* were represented especially by the classes of *Alphaproteobacteria* (30%) and *Gammaproteobacteria* (30%). The most represented families within these classes were *Rhodobacteraceae* (18%), *Flavobacteriaceae* (9%), and *Microbacteriaceae*

(7%). *Haliaceae* (2%), *Sphingomonadaceae* (2%), and *Vibrionaceae* (1%) were minor components. At the genus level, *Izama* (9%), *Planktomarina* (8%), and *Candidatus Aquiluna* (6%) were the dominant taxa. The most represented subdominant genera were *Rhodococcus* and *Litoricola* (2%), followed by other genera with an abundance of 1%, such as *Vibrio*.

Beta diversity between gills and seawater microbiota was evaluated using a PCoA analysis. The samples' separation into distinct clusters was clearly evident (PERMANOVA  $p \leq 0.05$ ) (Fig. 3A). Species richness and abundance were higher in seawater than in mussels ( $p \leq 0.001$ ) (Fig. 3B). The differential abundance analysis revealed the presence of 509 genera differentially expressed between the two groups ( $p \leq 0.05$ ), in particular, *Rhodoplanes*, *Streptomyces*, *Oerskovia*, *Nocardia*, *Blastococcus*, *Comamonas*, *Allorhizobium-Neorhizobium-Pararhizobium-Rhizobium*, *Pedobacter*, *Ralstonia*, *Planococcus*, *Methylobacterium-Methylorubrum*, *Arthrobacter*, and *Burkholderia-Caballeronia-Paraburkholderia* were up-represented in gill samples compared to water.

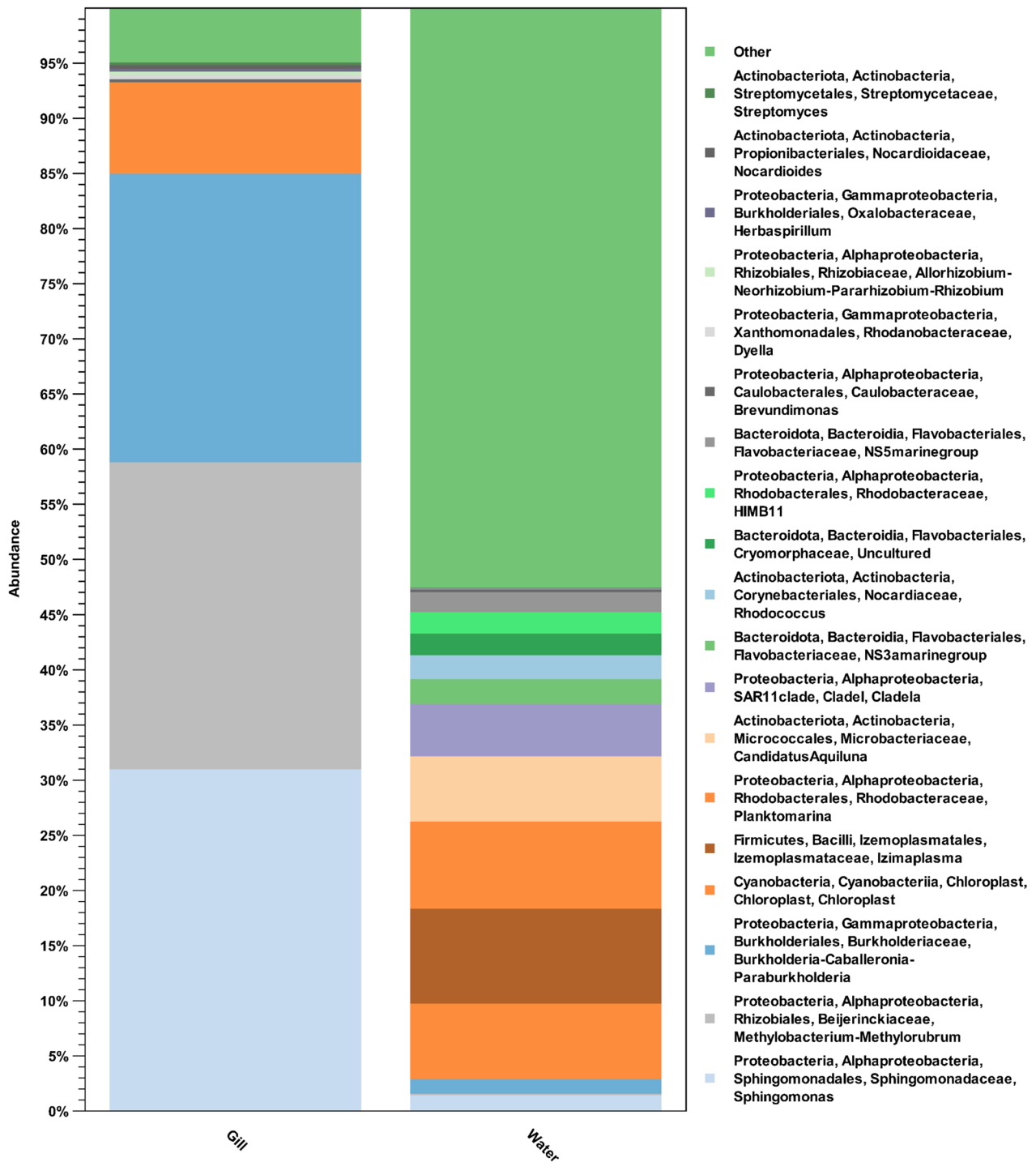
#### Comparison of the bacterial communities between the northwest and southeast lagoon sites

To investigate the differences in microbiota structure in the two different rearing sites, a multivariate analysis of gills and seawater microbial compositions was conducted. The PCoA analysis showed that the bacterial profile of the two sites does not cluster separately. Indeed, the PERMANOVA test provided no significant  $p$  value for either gill or seawater samples. As for the alpha diversity, a comparison between the two sites (northwest and southeast) did not show significant differences in species richness and abundance (Figure S1).

#### Impact of sampling time on microbiota profile

Aiming to evaluate the sampling time effect on the microbiota profile of seawater and gills, we compared the bacterial profiles of samples collected at three distinct times, i.e., April, May, and June 2021. In gill samples, the PCoA analysis, based on Bray-Curtis distances, did not evidence a clear pattern of cluster separation (Fig. 4A). Indeed, the PERMANOVA pairwise test provided no significant  $p$  value between groups. Alpha diversity comparison of groups revealed a significantly lower value in community diversity in April compared to May and June ( $p \leq 0.05$ ) (Fig. 4B). The differential abundance analysis showed 9 genera differentially expressed between June and May, 3 genera between May and April, and only one genus with a statistically different abundance between June and April (Fig. 5A).

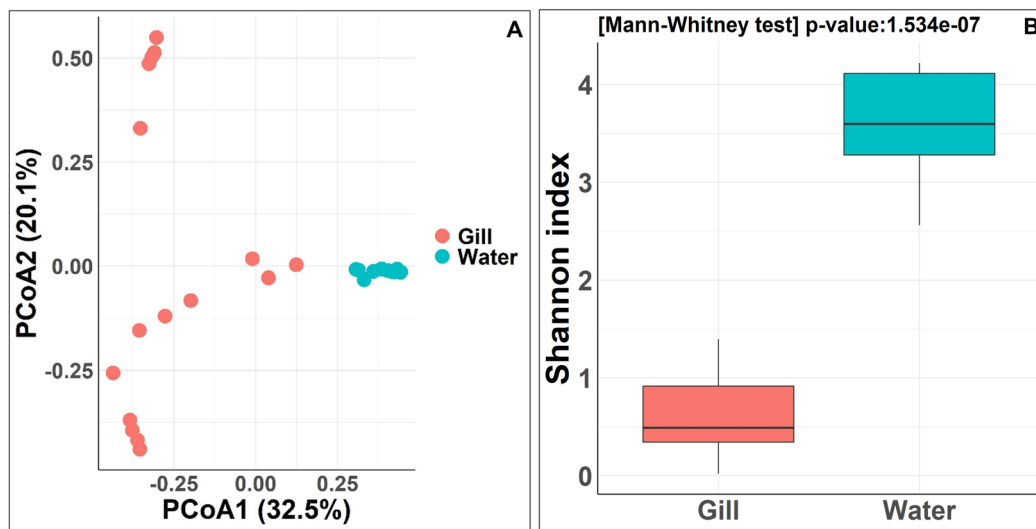
The seawater samples were clustered into three different groups (PERMANOVA  $p \leq 0.002$ ) (Fig. 4C). No



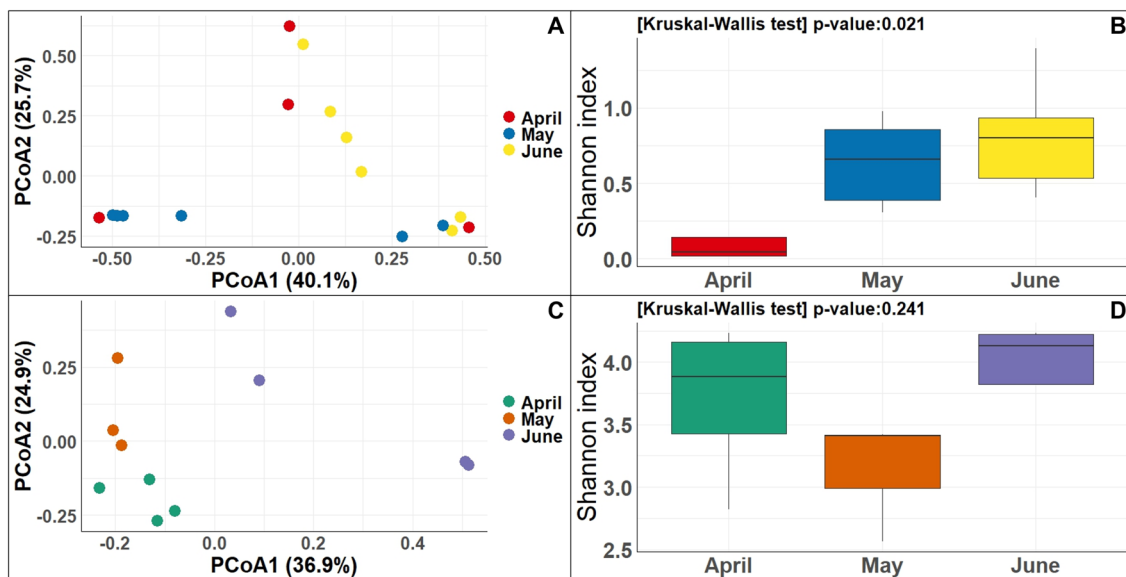
**Fig. 2** Bar plots summarizing the microbiota composition of the 10 most abundant bacteria taxa for gill and seawater samples. For gills and seawater, the samples with different sampling times and sites are averaged together within the same histogram bar. Other taxa are grouped into "Other"

differences in bacterial abundance and richness were detected during sampling times by the Shannon index (Fig. 4D). At the genus level, the differential abundance analysis highlighted 15 bacterial genera with significantly

different abundances between May and June, 16 between June and April, and 6 between May and April ( $p \leq 0.05$ ) (Fig. 5B).



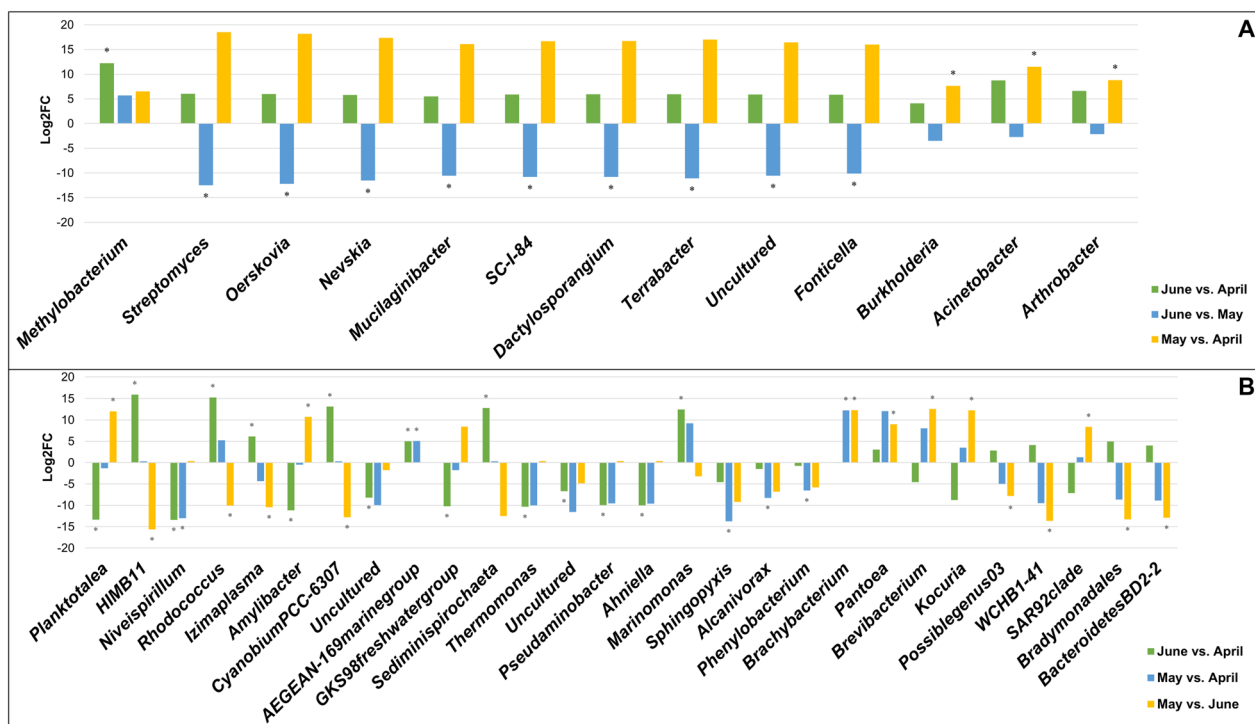
**Fig. 3** Multivariate analysis and species diversity plots for the bacterial communities in gill tissues and seawater samples. Principal Component Analysis (PCoA) (A). Box plot of alpha diversity using the Shannon index (B). The significance level (Mann-Whitney test) is reported above the B graph



**Fig. 4** Principal coordinate analysis of gill samples between different sampling times (A). Box plot of alpha diversity of gill samples with Shannon index (B). Principal coordinate analysis of seawater between different sampling times (C). Box plot of alpha diversity of seawater with Shannon index (D). The significance level (Kruskal-Wallis test) is reported above the B and D graphs

To further explore the effect of this as well as those from the other variables in relation to all aspects of beta diversity in terms of taxa distribution and their respective prevalence, we conducted a similarity percent (SIMPER) analysis, the results of which are shown in Supplementary Table S3. Inspecting the scores to assess which taxa are primarily responsible for the observed difference between samples, it can be seen that both for the gill vs.

water comparison and for that between the northeast vs. southwest shore sites, the top of the score was occupied by *Burkholderia-Caballeronia Paraburkholderia*, while in the contrasts between sampling months, from May onwards, the leading taxon resulted as *Methylobacterium-Methylorubrum*. The beta-diversity was further inspected by performing a Morisita-Horn similarity measurement in non-metric multidimensional scaling



**Fig. 5** Clustered bar chart with the Log<sub>2</sub> fold change values of different (Wald test,  $p \leq 0.05$ ) genera between the three sampling times in gill samples (A) and seawater (B). Significant differences are highlighted with the (\*) symbol

and focusing on four contrasts: the difference between South and North shore site for gills, between South and North shore site for seawater; among months for gills, and among months for seawater. Results are shown in Supplementary information Fig. S3. The months-by-seawater contrast resulted the least overlapping for the involved sets.

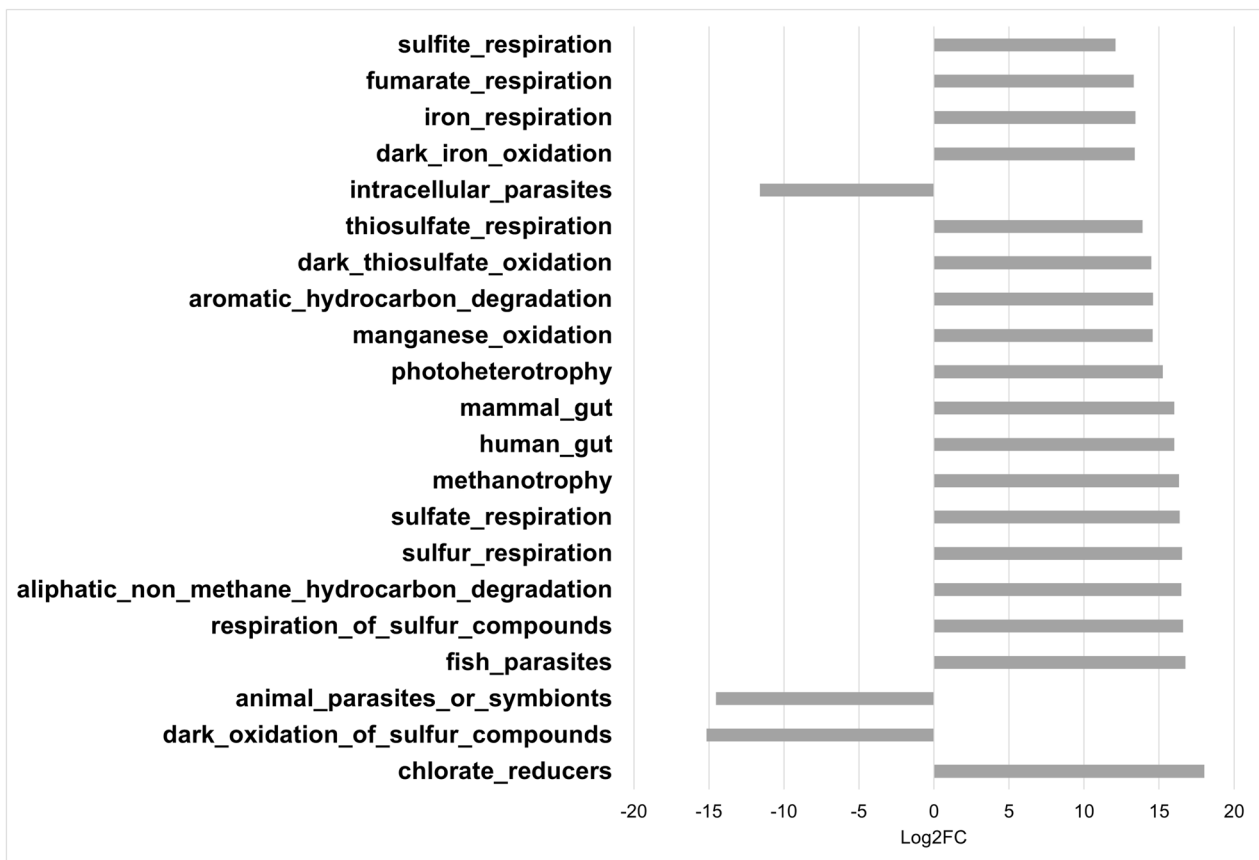
#### Functional prediction of the microbial communities of *M. galloprovincialis* and seawater

Functional phenotype prediction based on the taxonomical information with FAPROTAX allowed us to infer different predicted pathways between gills and seawater. Overall, 40 functional groups were identified in gills; the dominant ones pointed to the category of human pathogens and associated, oxidation of sulfur compounds, animal parasites, and symbionts. In seawater, the dominant functional groups included methanotrophy, chlorate reducers, fish parasites, and the respiration of sulfur compounds. Twenty-one functional groups showed statistically significant differences between gill samples and seawater bacterial communities (Wald test,  $p \leq 0.05$ ) (Fig. 6). The functional groups that were more abundant in gill samples consisted of the oxidation of sulfur compounds, animal parasites, symbionts, and intracellular parasites.

Different relative abundances of functional groups in gill samples were evidenced between June and May. The gills microbiota in June showed enrichment in the oxidation of sulfur compounds, animal parasites, symbionts, intracellular parasites, and non-photosynthetic cyanobacteria. The Wald test also revealed the presence of differences ( $p \leq 0.05$ ) in functional bacteria groups between sampling times in seawater samples. Eighteen differentially functional groups were evidenced between April and May, 12 between June and April, and 14 between May and June (Fig. 7).

#### Discussion

In this study, we aimed to characterize and compare the composition of gills' bacterial communities of *M. galloprovincialis* and those of the surrounding water in a brackish inshore bay (Scardivari lagoon), with a multi-amplicon sequences technology. In agreement with other studies on mussels' gills microbiota (Brito et al. 2018; Lin et al. 2021; Musella et al. 2020), sequencing results revealed the dominant presence of *Proteobacteria* and *Actinobacteria* at the phylum level. Within the group of *Proteobacteria*, our results highlighted a high relative abundance of the classes of *Alphaproteobacteria* and *Gammaproteobacteria*, which are well-known highly abundant marine microorganisms, as reported

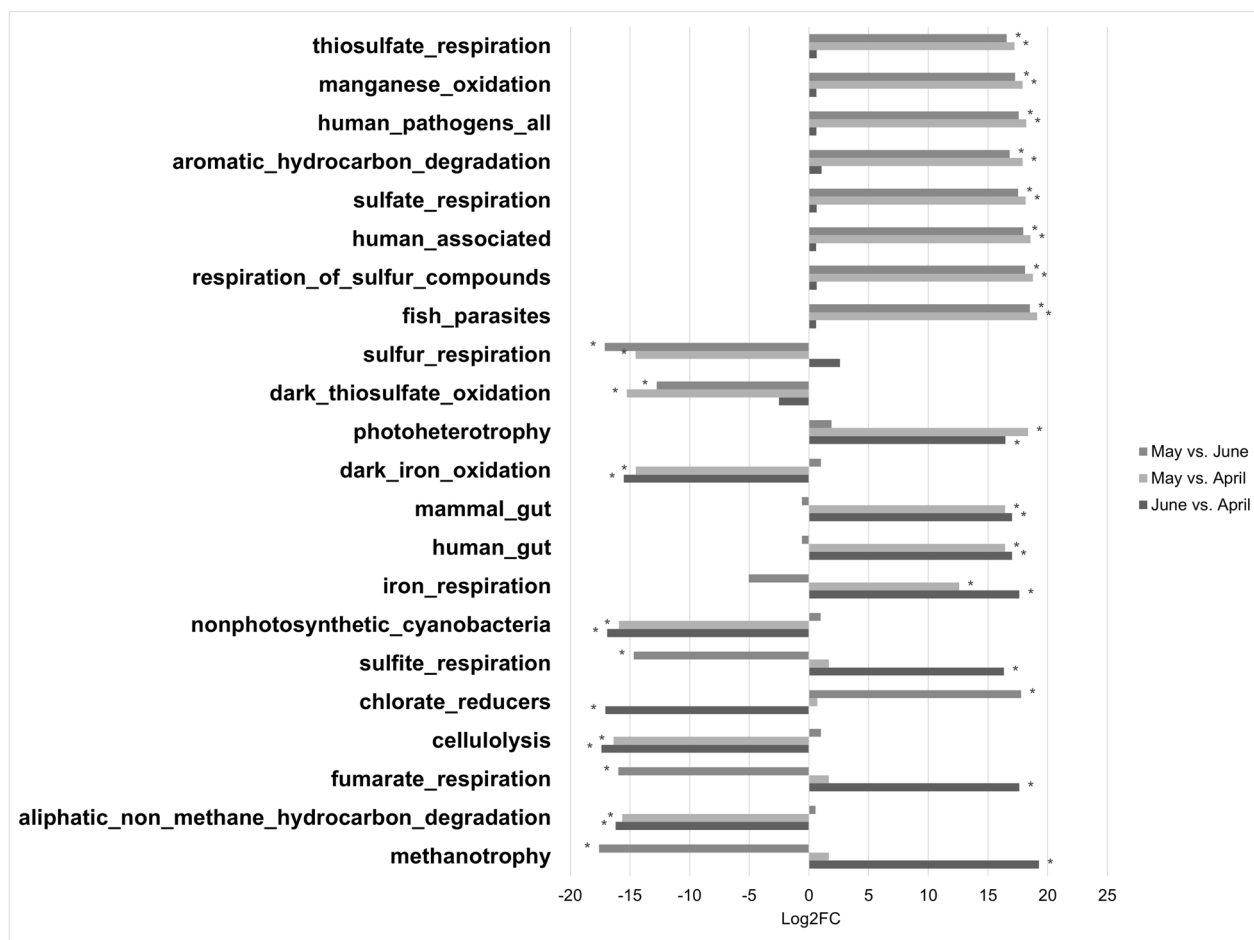


**Fig. 6** Clustered bar chart with the Log<sub>2</sub> fold change values of significantly different (Wald test,  $p \leq 0.05$ ) functional groups between gill samples and seawater. Genera with positive values are overrepresented in seawater. Genera with negative values are overrepresented in gill samples

in previous studies on the 16S rRNA gene (Fernandez-Piquer et al. 2012; Zurel et al. 2011). As for seawater, the dominant phyla were those of *Proteobacteria* and *Bacteroidetes*, followed by the groups of *Actinobacteria* and *Firmicutes*. These findings are consistent with other studies on microbial communities of coastal lagoons (Musella et al. 2020; Trombetta et al. 2022), which highlighted a relative abundance of *Proteobacteria* from 50 to 70%, and *Bacteroidetes* 15–30%; with a minor presence of *Actinobacteria*. Interestingly, the *Firmicutes*, which usually have an abundance of less than 1% (Musella et al. 2020; Trombetta et al. 2022), reached 9% in the environment that we analyzed. In this respect, the phylum being typically endowed with spore-forming capabilities, the differential yield across reports can be linked to different efficiencies in the DNA extraction particularly in the mechanical and chemical lysing steps. In our case, the 10-min tissue lyser treatment may have warranted a thorough extractive power. According to our alpha and beta diversity results, the gills and seawater microbial profiles presented a markedly different structure. Consistently, Musella et al. (2020) showed the *Mytilus galloprovincialis* microbiota

well differentiated from that of seawater. As an advancement of prior knowledge, in our study, we also show that the microbial gill composition is affected by seasonal dynamics and it changes upon sampling times distributed in a continuous series within the same season. We found gills microbiota was dominated by *Methylobacterium-Methylorubrum*, *Burkholderia-Caballeronia-Paraburkholderia*, and *Sphingomonas*. The differential abundance analysis revealed the first two genera were over-represented in gill tissues. The SIMPER analysis (Supplementary Table S3) allowed us to see the respective occurrence of these dominant taxa and their shifts of prevalence in dissimilarity when comparing temporal or spatial aspects, as well as the gills versus the surrounding water habitat. *Methylobacterium-Methylorubrum* is a facultative methylotrophic symbiont that can utilize one-carbon atom compounds during its metabolism as an energy source. Species of this genus have often been found associated with plants, mussels, and soil (Jia et al. 2020; Jiang et al. 2020). The abundance of these bacteria in mussels has been reported in different environments and their presence has been recognized to contribute to





**Fig. 7** Clustered bar chart with the  $\text{Log}_2$  fold change values of different (Wald test,  $p \leq 0.05$ ) functional groups between the three sampling times in seawater. Significant differences are highlighted with the (\*) symbol

the optimization of energy yield (Bergquist et al. 2004; Duperron et al. 2007; Lin et al. 2021). *Burkholderia* is a ubiquitous bacterium that can produce secondary metabolites with antagonistic effects on pathogenic bacteria (Trabal Fernandez et al. 2014). This bacterial genus can also act as a symbiont due to its capacity to use methylotrophic, nitrogen, and hydrocarbon compounds during energy metabolism (Mills et al. 2012; Pérez-Pantoja et al. 2011).

The functional prediction of microbial community evidenced the dominant presence of sulfur-oxidizing bacteria, animal parasites and symbionts, and intracellular parasites in gills tissues.

Aerobic sulfur-oxidizing prokaryotes belonging to different genera such as *Methylobacterium* and *Bathymodiolus* are known for symbiotic associations that sustain host metabolism (Friedrich et al. 2001). Interestingly, FAPROTAX also evidenced functional groups related to human pathogens. Among the dominant taxa, the *Burkholderia* and *Sphingomonas* genera can contain possible

opportunistic pathogens that play a role in human and animal diseases (Espinosa-Victoria et al. 2020). Nevertheless, it needs to be remembered that this and any other tools basing functional inference on taxonomical data yield solely predictive indications. Timewise, as shown in Supplementary Table S3, *Sphingomonas* showed an over 30-fold increase from April to May followed by a 3-fold reduction from May to June. Moreover, the Wald test also detected an increase in *Ralstonia* and *Comamonas* in gills tissue with respect to seawater, which can contain some possible pathogenic bacteria. However, some members of these genera are also capable of nitrogen reduction and methylotrophy symbiotic metabolism (Ryan and Adley 2010). Therefore, further studies are required to better understand the relations of these bacterial genera with gill tissues.

In our study, we also investigated the effect of sampling sites on microbiota communities. The alpha and beta diversity analysis did not show differences in species richness and abundance in either seawater or mussels as

regards the two sides of the bay. Recently, Lin et al. (2021) found similar gill bacteria communities in *Bathymodiolus* mussels from the adjacent cold seep and hydrothermal vent environments. In contrast, previous studies that characterized the influence of location on the mollusks found significant differences in microbial communities (Valenzuela et al. 2021).

Data collected in this study identified several differences between the two sites, suggesting that in the farming area of the Scardovari lagoon, although successional changes occur, the overall ecology indexes for the corresponding different communities of gills and seawater maintain similar levels.

As mentioned, we specifically explored the effect of sampling time on microbial communities. Previous studies on marine organisms evidenced a significant temporal heterogeneity in microbial composition (Li et al. 2019; Zurel et al. 2011). These findings are consistent with our results, where a sampling time effect was detected in both gill samples and seawater.

With regard to gill samples, the bacterial diversity resulted significantly lower in April than in May and June, when it reached similar and apparently stable values. This pattern of alpha diversity under our conditions differed from a previous study (Li et al. 2019), where warmer temperatures led to a temporal decrease of the microbial diversity in the gut of *Mytilus coruscus*. However, such an effect has to be considered valid for the limited quarter of the year that has been examined.

Interestingly, the seawater Shannon index did not differ among sampling times, but the PCoA showed a specific and significantly different clustering (PERMANOVA,  $p < 0.05$ ) of the three groups. During our study, sampling time shifts in environmental conditions were dominated by changing temperature, salinity, dissolved oxygen, and chlorophyll. Some reports have demonstrated that bacterial community structure is influenced by several environmental factors, such as pH, salinity, dissolved oxygen, nutrients, and especially water temperature (Gerpe et al. 2021; Lokmer et al. 2016).

The functional predictor FAPROTAX detected sampling time-related changes also in functional groups, with enrichment of bacteria endowed with the oxidative potential of sulfur compounds in gill samples in the June sampling. Previous studies demonstrated the presence of sulfur-oxidizing symbionts that could coexist in the deep-sea *Bathymodiolus* mussels (Ling et al. 2020). As for seawater, the functional groups were affected by the sampling time, with enrichment of thiosulfate respiration, and aromatic and hydrocarbon degradation pathways, suggesting a possible higher anthropogenic pollution by aromatic and hydrocarbon compounds.

Moreover, human and mammal gut functional groups were detected in May and June, suggesting a higher anthropic impact in these 2 months. Moreover, gut-derived bacteria are well-known as potential pathogenic microorganisms. These findings are in agreement with previous reports that showed that warm temperatures can alter microbial communities' composition, favoring the shift from beneficial bacteria to opportunistic pathogens (Erwin et al. 2012; Zhang et al. 2021).

## Conclusions

Our study provides innovative information about the composition and putative function of microbiota present in the gills of *Mytilus galloprovincialis* and the surrounding water in the lagoon ecosystem, to advance our understanding of their dynamics and composition. Our results highlighted a characteristic gills' bacteria profile, with a sharply different structure from the seawater micro-ecosystem. Moreover, the identification of three main bacterial groups in gills' tissues, extends the knowledge of the symbiotic association between bacteria and mussels.

The study also provides novel information about the environmental influence on the microbiota of mussels and seawater in mussel-farming natural lagoons. The farming areas are not the primary factor that affects the microbiota profile of gills and seawater. On the contrary, sampling time differences were reflected by bacterial community structure with an increase across the sampling times of potential opportunistic bacteria.

In relation to our two tested hypotheses, we found that in relation to either alpha or beta diversities: (1) not only the animal-mediated selective enrichment leads to a bacterial community structure in gills different from that of the surrounding water source but also that such mussel-specific assemblage varies during the season both in terms of taxonomy and as predictable phenotypic traits and (2) the hierarchical ranking of the variables driving the change within the chosen basin, either in water or within gills, sees the temporal dimension dominate over the spatial one.

These findings suggest that the knowledge of autochthonous bacteria communities associated with mussels and seawater in the Po River Delta areas is essential to predict their changes and dynamics, to better manage mollusk production, and to preserve the lagoon environment. Future studies should focus on the seasonal dynamics of the mussel microbiota in different organs, to better understand bacterial variability at the tissue scale and also provide more information about the environmental effects on the *Mytilus galloprovincialis* microbiota.

## Materials and methods

### Study area and physical-chemical seawater quality parameters

Mussels and seawater were collected in two areas of the Scardovari lagoon (position: north-west  $44^{\circ} 51' N$ ,  $12^{\circ} 43' E$  and southeast  $44^{\circ} 51' N$ ,  $12^{\circ} 40' E$ ) (Fig. 8) for three times between April and June 2021 on the following dates: April 21, 2021, May 18, 2021, and June 16, 2021; inside a mussel farm located in the Po Delta, Porto Tolle (RO) (Italy). The farm is situated between two terminal branches (Tolle and Gnocca) of the Po River. The collection area extends over 535 ha and has an average depth of 3 m. Samples were taken along the mussel ropes within a 1-m-long stretch spanning between 2 and 3 m of depth from the water surface.

The data related to temperature, salinity, dissolved oxygen, pH, and chlorophyll of water were obtained from multiparameter ARPAV probes measured every 30 min/day (ARPAV 2021); for every parameter, the mean daily values recorded were analyzed on both the north and south side at every sampling time.

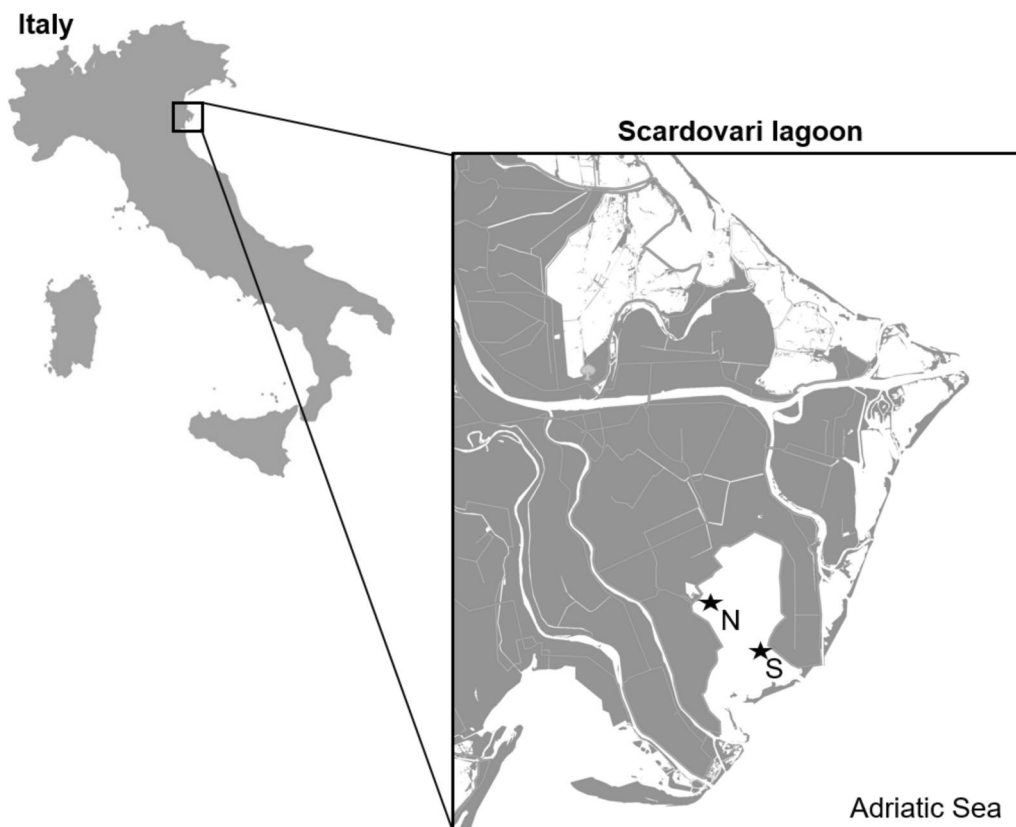
### Sampling and tissue preparation

At every harvest, 8 kg of mussels were collected, and 96 individuals were randomly picked to be immediately transported to the laboratory under refrigeration in coolers ( $4^{\circ}C$ ). After transport, the mussels were brushed, washed under water, and cleaned with ethanol (96%); a sterile scalpel was used to pry them open, which allowed draining off by gravity and discarding the intra-valvular fluid, after which the flesh was dissected under microbiologically controlled conditions. For each animal, 200 mg was taken from the gill tissue, placed in a 2 mL Eppendorf tube, and stored at  $-80^{\circ}C$ .

One liter of seawater was collected at a depth of 3 m using a sterile tube with a diameter of 10 cm and a length of 0.5 m that was made to rise along the water column. From that amount, 50 mL of seawater was taken and placed separately in two Falcon tubes (total 100 mL), transported in coolers ( $4^{\circ}C$ ) to the laboratory, and then stored at  $-80^{\circ}C$  until analysis.

### DNA extraction

For mussels, the bacterial DNA extraction from gills tissues was performed with the following protocol: 400



**Fig. 8** Geographical localization of the two rearing areas (black stars; N: northwest  $44^{\circ} 51' N$ ,  $12^{\circ} 43' E$ ; S: southeast  $44^{\circ} 51' N$ ,  $12^{\circ} 40' E$ ) in the Scardovari lagoon

$\mu\text{L}$  of RTL buffer (guanidine thiocyanate 0.12 M) (Qiagen, Hilden, Germany) was added to 200 mg of tissue in a 2 mL Eppendorf tube, together with one metallic bead. The homogenization step was performed with the use of a Tissue Lyser (Qiagen, Hilden, Germany) for 10 min at 30 Hertz. After the supplement of 400  $\mu\text{L}$  of RTL, the samples were subjected to enzymatic treatment with lysozyme (50 mg/mL, Thermo Fisher Scientific, Waltham, MA, USA) and proteinase K (20 mg/mL, Thermo Fisher Scientific, Waltham, MA, USA). At first, 20  $\mu\text{L}$  of lysozyme was added; samples were then incubated for 1h at 37 °C. After this step, tissues were treated with 20  $\mu\text{L}$  of proteinase K and incubated for 1h at 50 °C. At the end of the enzymatic treatment, samples were centrifuged for 6 min at 2100  $\times g$ , after which the supernatant was collected.

Seawater samples were centrifuged in the Falcon tubes at 5500 rpm for 10 min. The supernatant was removed, and 300  $\mu\text{L}$  RLT buffer was added to resuspend the pellet. The samples were then transferred to a 2 mL Eppendorf tube and subjected to enzymatic treatment with Proteinase K at 50 °C for 1h. In the end, samples were again centrifuged for 5 min at 6000  $\times g$ , after which the supernatant was collected.

DNA purification involved, for all samples, the use of a Biosprint 96 automated workstation extractor (Qiagen, Hilden, Germany): 300  $\mu\text{L}$  of lysate was transferred into an S-block with 200  $\mu\text{L}$  isopropanol and 20  $\mu\text{L}$  MagAttract magnetic beads suspension (Qiagen, Hilden, Germany) and loaded into the instrument. The protocol involved the use of five other plates: one S-block with 500  $\mu\text{L}$  of RPW buffer (guanidine hydrochloride, 1.31M; Qiagen, Hilden, Germany), two plates with 500  $\mu\text{L}$  of ethanol (96%), another S-block with 500  $\mu\text{L}$  of tween solution at 0.02% and a last flat 96-well plate with 100  $\mu\text{L}$  of nuclease-free water where the DNA was eluted. The final concentration of DNA was measured with a Qubit 3.0 Fluorometer (Thermo Fisher Scientific, Waltham, MA, USA) using the Qubit<sup>TM</sup> DNA HS Assay Kit Fluorometer (Thermo Fisher Scientific, Waltham, MA, USA).

#### Gills and seawater bacterial 16S metabarcoding

For mussels, 5  $\mu\text{L}$  of the extracted DNA solution was taken from every sample and used to create three pools of thirty-two samples for each site and time for a total of 18 pools. Twelve seawater samples were analyzed.

The library preparation started with the amplification of hypervariable regions (V2, V4, V8 and V3, V6-7, V9). To perform this first step, we utilized the 16S Ion Metagenomics Kit (Thermo Fisher Scientific, Waltham, MA, USA) and the following amplification program: 95 °C for 10 min, 25 cycles of 95 °C for 30 s, 58 °C for 30 s, 72 °C for 20 s, and a hold stage at 72 °C for 7 min.

After PCR a cleaning step was performed, and libraries were normalized to 30 ng/ $\mu\text{L}$ . For barcode ligation, the Ion Xpress Plus 9 Fragment Library Kit (Thermo Fisher Scientific, Waltham, MA, USA) and Ion Express Barcode Kit (Thermo Fisher Scientific, Waltham, MA, USA) were used, and each sample was ligated with a distinctive barcode. Another amplification step was performed with the following program: 95 °C for 5 min, 7 cycles of 95 °C for 15 s, 58 °C for 15 s, and 70 °C for 1 min, then stored at 4 °C. Amplified libraries were quantified using a Qubit 3.0 Fluorometer with Qubit<sup>TM</sup> DNA HS Assay Kit to pool libraries at a final concentration of 100 pM. The pool was then processed by the Ion 520<sup>TM</sup> & Ion 530<sup>TM</sup> Kit – OT2 400bp (Thermo Fisher Scientific, Waltham, MA, USA) following the manufacturer's instructions. In the end, the sample was loaded on the Ion 520 chip (Thermo Fisher Scientific, Waltham, MA, USA) and the sequencing run was performed with Ion<sup>TM</sup> GeneStudio S5 System (Thermo Fisher Scientific, Waltham, MA, USA). Sequencing data have been deposited in the NCBI Sequence Reads Archive SRA under project Code PRJNA954590.

#### Bioinformatics and statistics

Raw reads were processed to trim 20 base pairs on both ends to remove primers using cutadapt v3.4 (Martin 2013) and analyzed using QIIME2 v2021.4 (Bolyen et al. 2019). The “qiime dada2 plugin” was used to denoise and dereplicate high-quality reads into amplicon variants (ASVs). An alpha rarefaction plot was produced using the “qiime alpha diversity” plugin to determine if the sequencing depth was sufficient. The SILVA SSU v138.1 database was additionally utilized as a reference for the taxonomic assignment of ASVs (Quast et al. 2013). Bacterial diversity and composition, including the Morisita-Horn beta diversity distances, were estimated with the MicrobiomeAnalyst online utility (<https://www.microbiomeanalyst.ca/>) (Chong et al. 2020); before the analysis, any samples not meeting customarily sufficient reads abundance were discarded and subsequently data were filtered to exclude reads occurring less than 4 times as standard safe practice to minimize biases related to sequencer error rate. Finally, a TSS (total sum scaling) data transformation was performed. Alpha diversity was evaluated using the Shannon diversity ecological index and assessing the significance of differences by the Kruskal-Wallis/Mann-Whitney statistical test (FDR-corrected  $p \leq 0.05$ ). Beta-diversity among samples was analyzed with principal coordinate analysis (PCoA) based on the Bray-Curtis distances to which the permutational MANOVA (PERMANOVA) statistical analysis (FDR-corrected  $p \leq 0.05$ ) was subsequently applied in order to investigate the statistical significance of sample

division. Differential abundance analysis, using the Wald test and TMM (trimmed mean of  $M$  values) normalization, was performed with the CLC Genomics Workbench (23.0.1) (Qiagen, Hilden, Germany) dedicated tool, to highlight significant differences (Bonferroni-corrected  $p \leq 0.05$ ) within bacteria taxa. The functional prediction was performed with FAPROTAX (Functional Annotation of Prokaryotic Taxa; Louca et al. 2016) using the default parameters with TSS normalization, to predict the main ecological processes of the microbial communities associated with gills and the surrounding seawater. The input was the genus level counts file. The Wald statistical test with the CLC Genomics Workbench (23.0.1) dedicated tool was performed to highlight significant differences (Bonferroni-corrected  $p \leq 0.05$ ) within bacteria functional groups.

The physical-chemical seawater parameters were processed using the STATISTICA 7 software package (StatSoft). Comparisons among means were performed by the Wilcoxon test (Bonferroni-corrected  $p \leq 0.05$ ).

The similarity percent SIMPER and multivariate redundancy analysis RDA were calculated using the PAST Software (Hammer et al. 2001).

## Supplementary Information

The online version contains supplementary material available at <https://doi.org/10.1186/s13213-024-01749-8>.

**Additional file 1: Figure S1.** Multivariate analyses for the bacterial communities in gill tissues and seawater samples between north-west and south-east sites. Principal Coordinate Analysis between the two sites in gill samples (A), Box plot of alpha diversity between the two sites in gill samples by the Shannon index (B), Principal Component Analysis between the two sites in seawater samples (C), Box plot of alpha diversity between the two sites in seawater samples with the Shannon index (D). Significance levels (Mann-Whitney test) are reported above the B and D graphs. **Table S1.** Between-sites differences of the physical-chemical parameters of seawater in each of the three sampling times. Data are expressed as mean  $\pm$ SE. Mean values labeled with different letters in the rows belonging to each of the months were significantly different at  $p$ -value  $\leq 0.05$ . **Table S2.** Among-times differences of the physical-chemical parameters of seawater in each of the two sampling areas. Data are expressed as mean  $\pm$ SE. Mean values labeled with different letters in the rows belonging to each of the two areas were significantly different at  $p$ -value  $\leq 0.05$ . **Figure S2.** Redundancy Analysis (RDA) evidencing the vectorial position of the explanatory environmental variables resulting from the communities composition data matrix. **Table S3.** SIMPER Similarity Percentage) Analysis evidencing which taxa are primarily responsible for an observed difference between groups of samples. The Bray-Curtis similarity measure was used as comparative metrics. The top scoring ten taxa for each comparison are reported. **Figure S3.** Morisita-Horn similarity measurement of non-rarefied data visualized using Non-Metric Multidimensional scaling. A: Difference between South and North shore site for gills; B: Difference between South and North shore site for seawater; C: Difference among months for gills; D: Difference among months for seawater.

## Acknowledgements

The authors are grateful to Dr. Emanuele Rossetti for his help in the identification and setting up of the two rearing areas in the Scardovari lagoon. The doctoral grant of Dr. G. Zardinoni was funded by the Fondazione Cassa di Risparmio di Padova e Rovigo (Call for Doctorates - 2021).

## Authors' contributions

PS, AT, and MD participated in the supervision and conceptualization of the study. GZ and PF collected the samples. GZ performed the analysis and interpretation of the data and wrote the first paper draft. SD contributed to the data analysis. AS contributed to the data interpretation and manuscript supervision. CS, LG, and SR contributed to revising and editing the manuscript. All authors critically reviewed the manuscript for intellectual content and gave final approval of the version to be published.

## Funding

Open access funding provided by Università degli Studi di Padova. This research was funded by the "Macro Ricerca" project of the University of Padova, Italy.

## Availability of data and materials

Sequencing data are available in the NCBI Sequence Reads Archive SRA under project Code PRJNA954590.

## Declarations

### Ethics approval and consent to participate

Not applicable.

### Consent for publication

Not applicable.

### Competing interests

The authors declare that they have no competing interests.

### Author details

<sup>1</sup>Department of Agronomy, Food, Natural Resources, Animals and Environment (DAFNAE), University of Padova, Viale dell'Università 16, Legnaro, 35020 Padova, Italy. <sup>2</sup>Department of Veterinary Medicine, University of Sassari, Via Vienna 2, 07100 Sassari, Italy. <sup>3</sup>Department of Prevention, Servizio Veterinario A.U.L.S.S. 5 POLESANA, Piazzale degli Etruschi 9, 45011 Adria, Italy. <sup>4</sup>Department of Comparative Biomedicine and Food Science (BCA), University of Padova, Viale dell'Università 16, Legnaro, 35020 Padova, Italy.

Received: 2 October 2023 Accepted: 3 January 2024

Published online: 17 January 2024

## References

- ARPAV (2021) Acque di transizione boe delta del po. (In Italian). ARPAV, Veneto, Italy. Available at <https://www.arpa.veneto.it/dati-ambientali/open-data/idrosfera/acque-di-transizione/acque-di-transizione-boe-delta-del-po>. [cited 1 September 2021; verifi].
- Balbi T, Vezzulli L, Lasa A, Pallavicini A, Canesi L (2020) Insight into the microbial communities associated with first larval stages of *Mytilus galloprovincialis*: possible interference by estrogenic compounds. *Comp Biochem Physiol C Toxicol Pharmacol* 237:108833. <https://doi.org/10.1016/j.cbpc.2020.108833>
- Bergquist DC, Fleckenstein C, Szalai EB, Knisel J, Fisher CR (2004) Environment drives physiological variability in the cold seep mussel *Bathymodiolus childressi*. *Limnol Oceanogr* 49(3):706–715. <https://doi.org/10.4319/lo.2004.49.3.0706>
- Bolyen E, Rideout JR, Dillon MR, Bokulich NA, Abnet CC, Al-Ghalith GA, Alexander H, Alm EJ, Arumugam M, Asnicar F, Bai Y, Bisanz JE, Bittinger K, Brejnrod A, Brislawn CJ, Brown CT, Callahan BJ, Caraballo-Rodríguez AM, Chase J, Caporaso JG (2019) Reproducible, interactive, scalable and extensible microbiome data science using QIIME2. *Nat Biotechnol* 37(8):852–857. <https://doi.org/10.1038/s41587-019-0209-9>
- Brito TL, Campos AB, Bastiaan Von Meijenfildt FA, Daniel JP, Ribeiro GB, Silva GGZ, Wilke DV, De Moraes DT, Dutilh BE, Meirelles PM, Trindade-Silva AE (2018) The gill-associated microbiome is the main source of wood plant polysaccharide hydrolases and secondary metabolite gene clusters in

- the mangrove shipworm *Neoteredo reynei*. *PLoS ONE* 13(11):e0200437. <https://doi.org/10.1371/journal.pone.0200437>
- Cappello S, Volta A, Santisi S, Genovesi L, Maricchiolo G (2015) Study of bacterial communities in mussel *Mytilus galloprovincialis* (Bivalvia: Mytilidae) by a combination of 16s Crdna and 16s Rdna sequencing. *JSM Microbiol* 3(1):1016 <https://www.jscimedcentral.com/Microbiology/microbiolgy-3-1016.pdf>
- Caroppo C, Roselli L, Di Leo A (2018) Hydrological conditions and phytoplankton community in the Lesina lagoon (southern Adriatic Sea, Mediterranean). *Environ Sci Pollut Res* 25(2):1784–1799. <https://doi.org/10.1007/s11356-017-0599-5>
- Chong J, Liu P, Zhou G, Xia J (2020) Using MicrobiomeAnalyst for comprehensive statistical, functional, and meta-analysis of microbiome data. *Nat Protoc* 15(3):799–821. <https://doi.org/10.1038/s41596-019-0264-1>
- Cibic T, Fazi S, Nasi F, Pin L, Alvisi F, Berto D, Viganò L, Zoppini A, Del Negro P (2019) Natural and anthropogenic disturbances shape benthic phototrophic and heterotrophic microbial communities in the Po River Delta system. *Estuar Coast Shelf Sci* 222:168–182. <https://doi.org/10.1016/j.ecss.2019.04.009>
- Claesson MJ, Wang Q, O'Sullivan O, Greene-Diniz R, Cole JR, Ross RP, O'Toole PW (2010) Comparison of two next-generation sequencing technologies for resolving highly complex microbiota composition using tandem variable 16S rRNA gene regions. *Nucleic Acids Res* 38(22):e200. <https://doi.org/10.1093/nar/gkq873>
- Duperron S, Halary S, Lorion J, Sibuet M, Gaill F (2007) Unexpected co-occurrence of six bacterial symbionts in the gills of the cold seep mussel *Idas* sp. (Bivalvia: Mytilidae). *Environ Microbiol* 10(2):433–445. <https://doi.org/10.1111/j.1462-2920.2007.01465.x>
- Erwin PM, Pita L, López-Legentil S, Turon X (2012) Stability of sponge-associated bacteria over large seasonal shifts in temperature and irradiance. *Appl Environ Microbiol* 78(20):7358–7368. <https://doi.org/10.1128/AEM.02035-12>
- Espinosa-Victoria D, López-Reyes L, Carcaño-Montiel MG, Serret-López M (2020) The *Burkholderia* genus: between mutualism and pathogenicity. *Rev Mex Fitopatol* 38(3):337–359. <https://doi.org/10.18781/r.mex.fit.2004-5>
- Fernandez-Piquer J, Bowman JP, Ross T, Tamplin ML (2012) Molecular analysis of the bacterial communities in the live Pacific oyster (*Crassostrea gigas*) and the influence of postharvest temperature on its structure. *J Appl Microbiol* 112:1134–1143. <https://doi.org/10.1111/j.1365-2672.2012.05287.x>
- Franzellitti S, Striano T, Valbonesi P, Fabbri E (2016) Insights into the regulation of the MXR response in haemocytes of the Mediterranean mussel (*Mytilus galloprovincialis*). *Fish Shellfish Immunol* 58:349–358. <https://doi.org/10.1016/j.fsi.2016.09.048>
- Franzo A, Asoli A, Roscioli C, Patrolecco L, Bazzaro M, Del Negro P, Cibic T (2019) Influence of natural and anthropogenic disturbances on foraminifera and free-living nematodes in four lagoons of the Po delta system. *Estuar Coast Shelf Sci* 220:99–110. <https://doi.org/10.1016/j.ecss.2019.02.039>
- Freitas R, Silvestro S, Coppola F, Meucci V, Battaglia F, Intorre L, Soares AMVM, Pretti C, Faggio C (2019) Biochemical and physiological responses induced in *Mytilus galloprovincialis* after a chronic exposure to salicylic acid. *Aquat Toxicol* 214:105258. <https://doi.org/10.1016/j.aquatox.2019.105258>
- Friedrich CG, Rother D, Bardischewsky F, Ouentmeier A, Fischer J (2001) Oxidation of reduced inorganic sulfur compounds by bacteria: emergence of a common mechanism? *Appl Environ Microbiol* 67(7):2873–2882. <https://doi.org/10.1128/AEM.67.7.2873-2882.2001>
- Gagné F, Auclair J, Turcotte P, Gagnon C, Peyrot C, Wilkinson K (2019) The influence of surface waters on the bioavailability and toxicity of zinc oxide nanoparticles in freshwater mussels. *Comp Biochem Physiol C Toxicol Pharmacol* 219:1–11. <https://doi.org/10.1016/j.cbpc.2019.01.005>
- Gerpe D, Lasa A, Lema A, Romalde JL (2021) Metataxonomic analysis of tissue-associated microbiota in grooved carpet-shell (*Ruditapes decussatus*) and Manila (*Ruditapes philippinarum*) clams. *Int Microbiol* 24(4):607–618. <https://doi.org/10.1007/s10123-021-00214-9>
- Hammer Ø, Harper DAT, Ryan PD (2001) PAST: Paleontological Statistics Software Package for education and data analysis. *Palaeontologia Electronica* 4(1):9
- Ikeda-Ohtsubo W, Brugman S, Warden CH, Rebel JMJ, Folkerts G, Pieterse CMJ (2018) How can we define "optimal microbiota?": a comparative review of structure and functions of microbiota of animals, fish, and plants in agriculture. *Front Nutr* 5:90. <https://doi.org/10.3389/fnut.2018.00090>
- Imhof JF, Sahling H, Suling J, Kath T (2003) 16S rDNA-based phylogeny of sulfur oxidizing bacterial endosymbionts in marine bivalves from cold-seeps environments. *Mar Ecol Prog* 249:39–51. <https://doi.org/10.3354/meps249039>
- Jahnke LL, Summons RE, Dowling LM, Zahiralis KD (1995) Identification of methanotrophic lipid biomarkers in cold-seep mussel gills: chemical and isotopic analysis. *Appl Environ Microbiol* 61:2 <https://journals.asm.org/journal/aem>
- Jia LJ, Zhang KS, Tang K, Meng JY, Zheng C, Feng FY (2020) *Methylobacterium crusticola* sp. Nov., isolated from biological soil crusts. *Int J Syst Evol Microbiol* 70(3):2089–2095. <https://doi.org/10.1099/ijsem.0.004020>
- Jiang L, An D, Wang X, Zhang K, Li G, Lang L, Wang L, Jiang C, Jiang Y (2020) *Methylobacterium planium* sp. nov., isolated from a lichen sample. *Arch Microbiol* 202(7):1709–1715. <https://doi.org/10.1007/s00203-020-01881-4>
- Lamarck JBM (1819) Histoire naturelle des animaux sans vertèbres. Tome 6(1): 343. Available at <http://www.biodiversitylibrary.org/item/47441>. [cited 1 September 2021; verifi].
- Legendre P, Legendre L (1998) Numerical Ecology, 2nd English edn. Elsevier, p 853
- Li YF, Xu JK, Chen YW, Ding WY, Shao AQ, Liang X, Zhu YT, Yang JL (2019) Characterization of gut microbiome in the mussel *Mytilus galloprovincialis* in response to thermal stress. *Front Physiol* 10. <https://doi.org/10.3389/fphys.2019.01086>
- Lin G, Lu J, Sun Z, Xie J, Huang J, Su M, Wu N (2021) Characterization of tissue-associated bacterial community of two Bathymodiolus species from the adjacent cold seep and hydrothermal vent environments. *Sci Total Environ* 796:149046. <https://doi.org/10.1016/j.scitotenv.2021.149046>
- Lin YT, Xu T, Ip JC, Sun Y, Fang L, Luan T, Zhang Y, Qian PY, Qiu JW (2023) Interactions among deep-sea mussels and their epibiotic and endosymbiotic chemoautotrophic bacteria: insights from multi-omics analysis. *Zool Res* 44(1):106–125. <https://doi.org/10.24272/j.issn.2095-8137.2022.279>
- Ling J, Guan H, Liu L, Tao J, Li J, Dong J, Zhang S (2020) The diversity, composition, and putative functions of gill-associated bacteria of bathymodiolin mussel and vesicomid clam from Haima Cold Seep. *South China Sea. Microorganisms* 8(11):1699. <https://doi.org/10.3390/microorganisms8111699>
- Liu Z, Desantis TZ, Andersen GL, Knight R (2008) Accurate taxonomy assignments from 16S rRNA sequences produced by highly parallel pyrosequencers. *Nucleic Acids Res* 36(18):1–11. <https://doi.org/10.1093/nar/gkn491>
- Lokmer A, Kuenzel S, Baines JF, Wegner KM (2016) The role of tissue-specific microbiota in initial establishment success of Pacific oysters. *Environ Microbiol* 18(3):970–987. <https://doi.org/10.1111/1462-2920.13163>
- Louca S, Wegener Parfrey L, Doebeli M (2016) Decoupling function and taxonomy in the global ocean microbiome. *Science* 353(6305):1272–1277. <https://doi.org/10.1126/science.aaf4507>
- Martin M (2013) Cutadapt "removes adapter sequences from high-throughput sequencing reads". *EMBnet.j* 17:10–12. <https://doi.org/10.14806/ej.17.1.200>
- Mascolo G, Murgolo S, Stefani F, Viganò L (2019) Target and suspect contaminants of emerging concern in the Po River Delta lagoons. *Estuar Coast Shelf Sci* 230:106424. <https://doi.org/10.1016/j.ecss.2019.106424>
- Mills HJ, Reese BK, Shepard AK, Riedinger N, Dowd SE, Morono Y, Inagaki F (2012) Characterization of metabolically active bacterial populations in subsurface Nankai Trough sediments above, within, and below the sulfate-methane transition zone. *Front Microbiol* 3:113. <https://doi.org/10.3389/fmicb.2012.00113>
- Musella M, Wathala R, Tavella T, Rampelli S, Barone M, Palladino G, Biagi E, Brigidi P, Turroni S, Franzellitti S, Candela M (2020) Tissue-scale microbiota of the Mediterranean mussel (*Mytilus galloprovincialis*) and its relationship with the environment. *Sci Total Environ* 717:137209. <https://doi.org/10.1016/j.scitotenv.2020.137209>
- Orban E, Di Lena G, Navigato T, Casini I, Marzetti A, Caproni R (2002) Seasonal changes in meat content, condition index and chemical composition of mussels (*Mytilus galloprovincialis*) cultured in two different Italian sites. *Food Chem* 77(1):57–65. [https://doi.org/10.1016/S0308-8146\(01\)00322-3](https://doi.org/10.1016/S0308-8146(01)00322-3)

- Pathirana E, McPherson A, Whittington R, Hick P (2019) The role of tissue type, sampling and nucleic acid purification methodology on the inferred composition of Pacific oyster (*Crassostrea gigas*) microbiome. *J Appl Microbiol* 127(2):429–444. <https://doi.org/10.1111/jam.14326>
- Pérez-Pantoja D, Donoso R, Agulló L, Córdova M, Seeger M, Pieper DH, González B (2011) Genomic analysis of the potential for aromatic compounds biodegradation in *Burkholderiales*. *Environ Microbiol* 14(5):1091–1117. <https://doi.org/10.1111/j.1462-2920.2011.02613.x>
- Quast C, Pruesse E, Yilmaz P, Gerken J, Schweer T, Yarza P, Peplies J, Glöckner FO (2013) The SILVA ribosomal RNA gene database project: Improved data processing and web-based tools. *Nucleic Acids Res* 41(D1):D590–D596. <https://doi.org/10.1093/nar/gks1219>
- Roterman YR, Benayahu Y, Reshef L, Gophna U (2015) The gill microbiota of invasive and indigenous *Spondylus* oysters from the Mediterranean Sea and northern Red Sea. *Environ Microbiol Rep* 7(6):860–867. <https://doi.org/10.1111/1758-2229.12315>
- Ryan MP, Adley CC (2010) *Sphingomonas paucimobilis*: a persistent Gram-negative nosocomial infectious organism. *J Hosp Infect* 75(3):153–157. <https://doi.org/10.1016/j.jhin.2010.03.007>
- Schoinas K, Konstantou V, Bompou E, Floros G, Chatziplis D, Imsiridou A, Loukovitis D (2023) Microbiome profile of the Mediterranean mussel (*Mytilus galloprovincialis*) from Northern Aegean Sea (Greece) culture areas, based on a 16S rRNA next generation sequencing approach. *Diversity* 15(3):463. <https://doi.org/10.3390/d15030463>
- Simon JC, Marchesi JR, Mougel C, Selosse MA (2019) Host-microbiota interactions: from holobiont theory to analysis. *Microbiome* 7(1):1–5. <https://doi.org/10.1186/s40168-019-0619-4>
- Trabal Fernández N, Mazón-Suástegui JM, Vázquez-Juárez R, Ascencio-Valle F, Romero J (2014) Changes in the composition and diversity of the bacterial microbiota associated with oysters (*Crassostrea corteziensis*, *Crassostrea gigas* and *Crassostrea sikamea*) during commercial production. *FEMS Microbiol Ecol* 88(1):69–83. <https://doi.org/10.1111/1574-6941.12270>
- Trombetta T, Bouget FY, Félix C, Mostajir B, Vidussi F (2022) Microbial diversity in a north western Mediterranean Sea shallow coastal lagoon under contrasting water temperature conditions. *Front Mar Sci* 9:858744. <https://doi.org/10.3389/fmars.2022.858744>
- Valenzuela T, Rilling JI, Larama G, Acuña JJ, Campos M, Inostroza NG, Araya M, Altamirano K, Fujiyoshi S, Yarimizu K, Maruyama F, Jorquera MA (2021) 16s rna-based analysis reveals differences in the bacterial community present in tissues of *Choromytilus chorus* (*Mytilidae*, bivalvia) grown in an estuary and a bay in southern Chile. *Diversity* 13(5):209. <https://doi.org/10.3390/d13050209>
- Vernocchi P, Maffei M, Lanciotti R, Suzzi G, Gardini F (2007) Characterization of Mediterranean mussels (*Mytilus galloprovincialis*) harvested in Adriatic Sea (Italy). *Food Control* 18(12):1575–1583. <https://doi.org/10.1016/j.foodcont.2006.12.009>
- Wathsala RHGR, Musella M, Valbonesi P, Candela M, Franzellitti S (2021) Variability of metabolic, protective, antioxidant, and lysosomal gene transcriptional profiles and microbiota composition of *Mytilus galloprovincialis* farmed in the North Adriatic Sea (Italy). *Mar Pollut Bull* 172:112847. <https://doi.org/10.1016/j.marpolbul.2021.112847>
- Zhang R, Liu WC, Liu Y, Zhang HL, Zhao ZH, Zou LY, Shen YC, Lan WS (2021) Impacts of anthropogenic disturbances on microbial community of coastal waters in Shenzhen South China. *Ecotoxicol* 30(8):1652–1661. <https://doi.org/10.1007/s10646-020-02297-y>
- Zoppini A, Bongiorni L, Ademollo N, Patrolecco L, Cibic T, Franzo A, Melita M, Bazzaro M, Amalfitano S (2020) Bacterial diversity and microbial functional responses to organic matter composition and persistent organic pollutants in deltaic lagoon sediments. *Estuar Coast Shelf Sci* 233:106508. <https://doi.org/10.1016/j.ecss.2019.106508>
- Zurel D, Benayahu Y, Or A, Kovacs A, Gophna U (2011) Composition and dynamics of the gill microbiota of an invasive Indo-Pacific oyster in the eastern Mediterranean Sea. *Environ Microbiol* 13(6):1467–1476. <https://doi.org/10.1111/j.1462-2920.2011.02448.x>

## Publisher's Note

Springer Nature remains neutral with regard to jurisdictional claims in published maps and institutional affiliations.