

available at www.sciencedirect.comjournal homepage: eunoncology.europeanurology.com

European Association of Urology



Real-world Outcomes and Predictive Biomarkers for ^{177}Lu Lutetium Prostate-specific Membrane Antigen Ligand Treatment in Metastatic Castration-resistant Prostate Cancer: A European Association of Urology Young Academic Urologists Prostate Cancer Working Group Multi-institutional Observational Study

Mona Kafka^a, Andreas Horninger^a, Gianpaolo di Santo^b, Irene Virgolini^b, Hannes Neuwirt^c, Lena M. Unterrainer^d, Sophie C. Kunte^d, Emil Deiss^e, Pia Paffenholz^e, Axel Heidenreich^e, Sazan Rasul^f, Holger Einspieler^f, Shahrokh F. Shariat^{g,h,i,j,k,l,m,n,o}, Pawel Rajwa^{n,o}, Robert Dozauer^p, Igor Tsaour^p, Ellen Medlock^p, Niklas Rölz^p, Steffen Rausch^q, Christian la Fougère^r, Nils Trautwein^r, Marie C. Roesch^s, Axel S. Merseburger^s, Fabio Zattoni^t, Matteo Sepulcri^u, Michael Ladurner^a, Jasmin Bektic^a, Giorgio Gandaglia^v, Wolfgang Horninger^a, Isabel Heidegger^{a,*}

^aDepartment of Urology, Medical University Innsbruck, Innsbruck, Austria; ^bDepartment of Nuclear Medicine, Medical University Innsbruck, Innsbruck, Austria; ^cDepartment of Internal Medicine IV – Nephrology and Hypertension, Medical University Innsbruck, Innsbruck, Austria; ^dDepartment of Nuclear Medicine, University Hospital, LMU Munich, Munich, Germany; ^eDepartment of Urology, Uro-Oncology, Robot Assisted and Reconstructive Urologic Surgery, University of Cologne and University Hospital Cologne, Cologne, Germany; ^fDivision of Nuclear Medicine, Medical University of Vienna, Vienna, Austria; ^gDepartment of Urology, Comprehensive Cancer Center, Medical University of Vienna, Vienna, Austria; ^hDepartment of Urology, University of Texas Southwestern, Dallas, TX, USA; ⁱDepartment of Urology, Weill Cornell Medicine, New York, NY, USA; ^jDepartment of Urology, Second Faculty of Medicine, Charles University, Prague, Czechia; ^kInstitute for Urology and Reproductive Health, I.M. Sechenov First Moscow State Medical University, Moscow, Russia; ^lDivision of Urology, Department of Special Surgery, Jordan University Hospital, The University of Jordan, Amman, Jordan; ^mKarl Landsteiner Institute of Urology and Andrology, Vienna, Austria; ⁿDepartment of Urology, Medical University of Vienna, Vienna, Austria; ^oDepartment of Urology, Medical University of Silesia, Zabrze, Poland; ^pDepartment of Urology and Pediatric Urology, University Medical Center Mainz, Mainz, Germany; ^qDepartment of Urology, University Hospital Tübingen, Tübingen, Germany; ^rDepartment of Nuclear Medicine University Hospital Tübingen, Tübingen, Germany; ^sDepartment of Urology, University Hospital Schleswig-Holstein, Campus Lübeck, Lübeck, Germany; ^tDepartment Surgery, Oncology and Gastroenterology, Urologic Unit, University of Padova, Padova, Italy; ^uRadiation Oncology Unit, Veneto Institute of Oncology IRCCS, Padua, Italy; ^vUnit of Urology/Division of Oncology, Gianfranco Soldera Prostate Cancer Laboratory, IRCCS San Raffaele Scientific Institute, Milan, Italy

Article info

Article history:

Received 14 June 2023
Received in Revised form
24 July 2023
Accepted 31 July 2023

Associate Editor:
Morgan Rouprêt

Abstract

Background: The European Association of Urology guidelines include the lutetium-177 (^{177}Lu) PSMA-617 prostate-specific membrane antigen (PSMA) ligand as a therapy option for metastatic castration-resistant prostate cancer (mCRPC). A major challenge in clinical practice is to pursue a personalized treatment approach based on robust predictive biomarkers.

Objective: To assess the performance of ^{177}Lu PSMA in real-world practice and to elaborate clinical biomarkers for evaluating treatment responses.

* Corresponding author. Department of Urology, Medical University Innsbruck, Anichstreet 35, 6020 Innsbruck, Austria. Tel. +43 512 504 81925.
E-mail address: isabel-maria.heidegger@i-med.ac.at (I. Heidegger).

<https://doi.org/10.1016/j.euo.2023.07.018>

2588-9311/© 2023 The Author(s). Published by Elsevier B.V. on behalf of European Association of Urology. This is an open access article under the CC BY license (<http://creativecommons.org/licenses/by/4.0/>).

Please cite this article as: M. Kafka, A. Horninger, G. di Santo et al., Real-world Outcomes and Predictive Biomarkers for ^{177}Lu Lutetium Prostate-specific Membrane Antigen Ligand Treatment in Metastatic Castration-resistant Prostate Cancer: A European Association of Urology Young Academic Urologists Prostate Cancer Working Group Multi-institutional Observational Study, *Eur Urol Oncol* (2023), <https://doi.org/10.1016/j.euo.2023.07.018>

Keywords:

Alkaline phosphatase
 Biomarker
 Gamma-glutamyl transferase
 Lutetium
 Metastatic castration-resistant prostate cancer
 Personalized treatment
 Prostate-specific antigen doubling time
 Prostate-specific antigen decrease
¹⁷⁷Lu prostate-specific membrane antigen therapy

Design, setting, and participants: We conducted a retrospective observational study including 233 patients with mCRPC treated with ¹⁷⁷Lu PSMA in eight high-volume European centers.

Outcome measurements and statistical analysis: Baseline characteristics and clinical parameters during and after ¹⁷⁷Lu PSMA treatment were documented. Correlations to treatment response were analyzed using χ^2 and log-rank tests, with differences between groups with and without disease progression calculated using a Mann-Whitney U test. Univariate and multivariate-adjusted hazard ratios (HRs) were measured using Cox proportional hazards models.

Results and limitations: A prostate-specific antigen (PSA) decrease of $\geq 30\%$ was observed in 41.7%, 63.5%, and 77.8% of patients after the first, second, and third treatment cycle, respectively. Restaging performed via PSMA positron emission tomography-computed tomography revealed that 33.7% of patients had an imaging-based response, including two patients with a complete response, while 13.4% had stable disease. The median time to progression was 5 mo and the median time until the start of a consecutive antineoplastic therapy was 8.5 mo. Of importance, a PSA decrease $\geq 30\%$ after the first two cycles of ¹⁷⁷Lu PSMA (1 cycle: $p = 0.0003$; 2 cycles: $p = 0.004$), absolute PSA after the first three cycles (1 cycle: $p = 0.011$; 2 cycles: $p = 0.0005$; 3 cycles: $p = 0.002$), and a PSA doubling time >6 mo ($p = 0.009$) were significantly correlated to treatment response. Furthermore, gamma-glutamyl transferase ≤ 31 U/L at the start of ¹⁷⁷Lu PSMA therapy was correlated with 1.5 times higher risk of progression for patients without but not with visceral metastases ($p = 0.046$).

Conclusions: ¹⁷⁷Lu PSMA is an effective treatment option in mCRPC in the real-world setting. A PSA decrease $\geq 30\%$ after the first two cycles is an early marker of response that can be easily implemented in clinical practice.

Patient summary: ¹⁷⁷Lu PSMA is a radioactive agent approved for treatment of advanced prostate cancer. We reviewed its use outside of clinical trials for patients treated at eight European centers. We found that ¹⁷⁷Lu PSMA is an effective treatment option in real-world practice. A PSA (prostate-specific antigen) decrease of $\geq 30\%$ after the first two therapy cycles is an early indicator of response to treatment and can be used in personalizing treatments for patients.

© 2023 The Author(s). Published by Elsevier B.V. on behalf of European Association of Urology. This is an open access article under the CC BY license (<http://creativecommons.org/licenses/by/4.0/>).

1. Introduction

Treatment of metastatic prostate cancer has significantly shifted from androgen deprivation therapy (ADT) towards personalized treatment with the introduction of multiple innovative therapy options for both metastatic hormone-sensitive prostate cancer (mHSPC) and metastatic castration-resistant prostate cancer (mCRPC). According to the current European Association of Urology (EAU) guidelines, mCRPC treatment is based on ADT plus either taxane-based chemotherapy (docetaxel, cabazitaxel), androgen receptor signaling inhibitors (ARSIs), PARP inhibitors as monotherapy or in combination with abiraterone acetate/prednisone, immunotherapy agents (sipuleucel-T, ipatasertib), or radium-223 for bone-dominant disease [1]. Of note, the current EAU guidelines recommend for the first time ¹⁷⁷Lu PSMA-617, a radioligand therapy based on the VISION trial, a randomized multicenter trial evaluating ¹⁷⁷Lu PSMA plus best standard of care (SOC) versus best SOC alone in men with progressive prostate-specific membrane antigen (PSMA)-positive mCRPC [2]. VISION demonstrated significant improvement in both overall survival (OS) and radiographic progression-free survival (rPFS) in patients treated with ¹⁷⁷Lu PSMA [2]. However, cabazitaxel and olaparib

were excluded from SOC regimes, so patients could only be treated with ARSIs as SOC. Nevertheless, as a consequence of the study results, both the US Food and Drug Administration (FDA) and the European Medicines Agency (EMA) approved Pluvicto (¹⁷⁷Lu PSMA-617) for mCRPC previously treated with ARSIs and taxane chemotherapy. Furthermore, the prospective randomized TheraP trial recently demonstrated higher prostate-specific antigen (PSA) response rates and lower rates of grade 3–4 side effects among patients treated with ¹⁷⁷Lu PSMA-617 in comparison to cabazitaxel, highlighting the therapeutic strength of ¹⁷⁷Lu PSMA-617 [3].

Hence, a major challenge for clinicians is the selection of those patients who would best benefit from ¹⁷⁷Lu PSMA therapy and changing to alternative therapeutic strategies for nonresponders in order to pursue a personalized treatment approach [4]. While PSMA expression on PSMA positron emission tomography-computed tomography (PET-CT) is recognized as an imaging-based predictive biomarker, clinical biomarkers for easy and inexpensive therapy monitoring are still lacking. Therefore, the aim of the present multi-institutional observational study was to elucidate clinical biomarkers for evaluating treatment responses before and during ¹⁷⁷Lu PSMA therapy.

2. Patients and methods

An international, multicenter, retrospective observational study was conducted after approval from the local ethics committee (reference number 1140/2022). Clinical data for 233 patients with mCRPC treated with ^{177}Lu PSMA (different PSMA ligands) between January 2014 and June 2022 at eight high-volume European centers (Cologne, Mainz, Munich, Tübingen, Vienna, Padua, Lübeck/Kiel, and Innsbruck) were extracted from patient charts. As data were not 100% complete for every patient, the number of patients for whom data were available is included for each parameter in the tables.

Statistical analysis was performed using SPSS v26.0 (IBM Corp., Armonk, NY, USA). Baseline characteristics were tabulated with descriptive statistics for the population. The median and interquartile range (IQR) are reported for continuous variables, and the frequency and percentage for categorical variables. Correlation between various parameters and clinical progression was tested using χ^2 and log-rank tests. To calculate the significance of differences between groups with and without disease progression, we used the Mann-Whitney U test. Univariate and multivariate adjusted hazard ratios (HRs) were calculated using Cox proportional hazards models. For adjustment in multivariate analysis, we included the following potentially statistically relevant parameters that were explored in calculations using a Mann-Whitney U test and χ^2 test: PSA decrease $\geq 30\%$ after cycles 1–3, hemoglobin ≥ 10.4 g/l, visceral metastasis, gamma-glutamyl transferase (GGT) > 31 U/l, and alkaline phosphatase (ALP) > 220 U/l. All statistical tests were two-sided at a significance level of 0.05. Owing to the explorative nature of our study and the lack of prespecified statistical approach, we did not correct for multiple testing.

3. Results

3.1. Efficacy of ^{177}Lu PSMA ligand therapy

Data on PSA levels were collected after cycles 1–3 and at the end of treatment. After the first cycle, 41.7% of patients ($n = 79$) had a PSA decrease of $\geq 30\%$ in comparison to the start of therapy. After the second and third cycles, 63.5% ($n = 120$) and 77.8% ($n = 148$), respectively, had a PSA decrease of $\geq 30\%$. At the end of ^{177}Lu PSMA therapy, the median PSA was 85 ng/ml, compared to 99.2 ng/ml before therapy, and 56% of the patients ($n = 51$) had a PSA doubling time (PSA-DT) of < 6 mo, compared to 68.7% ($n = 68$) before ^{177}Lu PSMA treatment (Table 1). PSMA PET-CT was performed after a median of three cycles of ^{177}Lu PSMA and revealed an imaging response in 33.7% ($n = 58$), including two patients who experienced a complete response during therapy. According to Response Evaluation Criteria in Solid Tumors v2.0, 13.4% of patients ($n = 23$) were classified as having stable disease, while disease progression was observed in 52.9% ($n = 91$). With progression defined as fulfillment of two out of three criteria (clinical/symptomatic progression, PSA progression, and progress on imaging), 57.6% of the patients had progression during ^{177}Lu PSMA therapy, and 42.4% showed a response or at least had stable

disease. The median time to progression (TTP) was 5 mo in the overall population (mean 8.3, IQR 9) with a median time of 8.5 mo (mean 31.8, IQR 15) until the start of the next antineoplastic therapy. Among those undergoing subsequent treatment, most patients (40.7%, $n = 33$) received chemotherapy, while 22.2% ($n = 18$) had ^{177}Lu PSMA rechallenged and 16% ($n = 13$) received an ARSI as next treatment. Some 20.9% ($n = 17$) of patients underwent experimental therapies or were included in clinical trials. For the group of patients treated with chemotherapy, 46.6% ($n = 14$) received cabazitaxel, 43.3% ($n = 13$) received docetaxel, and 10% ($n = 3$) received carboplatin. At the end of our study period, 48% of patients were alive, 48% had died from prostate cancer, and 4% had died from other causes.

Routine laboratory measurements revealed declines in median hemoglobin (from 11.6 to 10.5 g/l) and thrombocyte count (from 229 to $191 \times 10^9/l$) after therapy, while median GGT (from 31 to 36 U/l) and ALP (from 96 to 113 U/l) had increased. However, of importance, the Eastern Cooperative Oncology Group (ECOG) performance status did not significantly change during therapy (ECOG 0–1: 95% before and 89.4% after ^{177}Lu PSMA therapy). Results for all parameters collected during and at end of treatment are listed in Table 1.

3.2. Baseline patient characteristics

Our population comprised 233 patients with mCRPC who received at least one cycle of ^{177}Lu PSMA therapy (median 3 cycles, IQR 2). Most patients (93.9%, $n = 219$) received up to six cycles of ^{177}Lu PSMA, while only 6% ($n = 14$) received up to 13 cycles in total (Supplementary Table 1). The median ^{177}Lu PSMA dose per patient was 22.7 GBq (mean 24.9, IQR 16.2). The median patient age at diagnosis was 64 yr (mean 63.3, IQR 11) and the median PSA at primary diagnosis was 29 ng/ml (Table 1). Some 58% of patients had de novo metastatic disease, of whom 73.6% were classified as having low-volume disease according to the CHAARTED criteria [5]. Of note, a significant proportion of patients were classified as D'Amico high risk at primary diagnosis, of whom 50% ($n = 64$) had International Society of Urological Pathology (ISUP) grade group 5, 26.5% ($n = 34$) had grade group 4, 13.2% ($n = 17$) had grade group 3, 7.8% ($n = 10$) had grade group 2, and 2.3% ($n = 3$) had grade group 1 disease. Some 91/190 patients (47.9%) underwent radical prostatectomy (RP) at when their disease was at the organ-confined stage, 14.7% ($n = 28$) had external beam radiation therapy (EBRT), 4.7% ($n = 9$) underwent RP followed by adjuvant EBRT, and 32.1% ($n = 61$) had received no previous local therapy. An antiandrogen or ADT monotherapy was used for primary systemic treatment in mHSPC in 54.3% ($n = 94$) of the patients, while 37.6% were treated with an ADT + ARSI combination ($n = 65$) and 8% ($n = 14$) with chemotherapy. Genetic testing was performed in 50/191 patients (26.1%) in our cohort, with genetic alterations found in 9.9% ($n = 19$; Supplementary Table 2).

Table 2 provides an overview of the baseline characteristics of the study population overall and by treatment response group. None of the baseline parameters were sig-

Table 1 – Clinical course and outcome after ¹⁷⁷Lu PSMA ligand therapy

| Parameter | N | Overall cohort | Response/stable disease | Disease progression | p value ^a |
|----------------------------------------------------|-----|----------------------|-------------------------|----------------------|----------------------|
| PSA after cycle 1 (ng/ml) ^b | 233 | 69.9 (365.6 ± 850) | 31.7 (251.2 ± 506) | 75.4 (394 ± 966) | 0.011 |
| PSA decrease after cycle 1 | 189 | | | | 0.00003 |
| ≥30% (n) | | 79 | 48 | 31 | |
| <30% (n) | | 110 | 33 | 77 | |
| PSA after cycle 2 (ng/ml) ^b | 210 | 40 (329.4 ± 794) | 17 (167.2 ± 407.2) | 80 (428.7 ± 996.9) | 0.0005 |
| PSA decrease after cycle 2 | 189 | | | | 0.004 |
| ≥30% (n) | | 120 | 61 | 59 | |
| <30% (n) | | 69 | 20 | 49 | |
| PSA after cycle 3 (ng/ml) ^b | 147 | 22.5 (229.8 ± 505.7) | 10 (118.8 ± 287.8) | 69.9 (342.9 ± 659.8) | 0.002 |
| PSA decrease after cycle 3 | 190 | | | | 0.051 |
| ≥30% (n) | | 148 | 69 | 79 | |
| <30% (n) | | 42 | 12 | 30 | |
| PSA AET (ng/ml) ^b | 189 | 85 (443.9 ± 920.4) | 8 (153.7 ± 395) | 169.9 (620.1 ± 1168) | <0.000005 |
| PSA doubling time AET (mo) ^b | 73 | 1.48 (74.2 ± 582) | -0.7 (9 ± 39.5) | 1.66 (131.5 ± 789.3) | 0.012 |
| PSA doubling time AET | 91 | | | | 0.009 |
| >6 mo (n) | | 40 | 16 | 24 | |
| ≤6 mo (n) | | 51 | 8 | 43 | |
| ECOG performance status AET | 132 | | | | 0.620 |
| ECOG 0 (n) | | 53 | 28 | 25 | |
| ECOG 1 (n) | | 65 | 29 | 36 | |
| ECOG 2–3 (n) | | 14 | 5 | 9 | |
| Hemoglobin AET (g/l) ^b | 202 | 10.5 (10.6 ± 5.6) | 11.2 (10.7 ± 3.6) | 10.5 (11 ± 6.6) | 0.096 |
| Thrombocytes AET (10 ⁹ /l) ^b | 202 | 191.5 (189.3 ± 94.2) | 205.5 (200 ± 76.7) | 204 (198.4 ± 105.2) | 0.736 |
| C-reactive protein AET (mg/dl) ^b | 191 | 0.91 (3 ± 5.6) | 0.23 (2.3 ± 6.55) | 1.2 (2.9 ± 4.7) | 0.0001 |
| GGT AET (U/l) ^b | 196 | 36 (85 ± 149.3) | 23 (55.5 ± 94.6) | 42 (88.5 ± 152.5) | 0.003 |
| Alkaline phosphatase AET (U/l) ^b | 196 | 113 (223 ± 314.8) | 82 (142 ± 199.9) | 143 (239 ± 336) | 0.00006 |
| Metastasis on PSMA PET-CT AET | 174 | | | | < 0.001 |
| Lymph nodes (n) | | 14 | 10 | 4 | |
| Bone (n) | | 29 | 19 | 10 | |
| Visceral (n) | | 3 | 1 | 2 | |
| Multiple (n) | | 128 | 48 | 80 | |
| Findings on PSMA PET-CT | 172 | | | | <0.001 |
| Disease progression (n) | | 91 | 0 | 91 | |
| Stable disease (n) | | 23 | 23 | 0 | |
| Response (n) | | 56 | 55 | 1 | |
| Complete response (n) | | 2 | 2 | 0 | |
| Time to progression (mo) ^b | 115 | 5 (8.3 ± 10.7) | 6.5 (8.9 ± 6.9) | 3 (7.9 ± 13.2) | 0.004 |
| Time to next therapy (mo) ^b | 78 | 8.5 (31.8 ± 80.5) | 12 (27 ± 45) | 5 (36.3 ± 102) | 0.160 |
| Type of next therapy | 81 | | | | |
| ARSI (n) | | 13 | 6 | 7 | |
| Chemotherapy (n) | | 33 | 14 | 19 | |
| ¹⁷⁷ Lu PSMA rechallenge (n) | | 18 | 13 | 5 | |
| Other (eg, clinical trial) (n) | | 17 | 6 | 11 | |
| Cause of death | 131 | | | | |
| Alive (n) | | 63 | 35 | 28 | |
| Prostate cancer (n) | | 63 | 22 | 41 | |
| Other (n) | | 5 | 1 | 4 | |

PSMA = prostate-specific membrane antigen; PSA = prostate-specific antigen; AET = at end of treatment; ECOG = Eastern Cooperative Oncology Group; ARSI = androgen receptor signaling inhibitor; GGT = gamma-glutamyl transferase; PET-CT = positron emission tomography-computed tomography.

^a p value for correlation with progression after ¹⁷⁷Lu PSMA ligand therapy. Progression was defined as fulfillment of two of the following three criteria: clinical/symptomatic progression, PSA progression, and progression on imaging.

^b Result presented as median (mean ± standard deviation).

nificantly associated with treatment response to ¹⁷⁷Lu PSMA.

3.3. Patient characteristics at the start of ¹⁷⁷Lu PSMA ligand therapy

At the start of therapy, median PSA was 99.2 ng/ml and 68.7% (n = 68) of patients had a PSA-DT of <6 mo. Some 75% (n = 140) had multiple metastases on PSMA PET-CT, while 14.9% (n = 28) had only osseous metastasis, 9.6% (n = 18) had only lymph node metastasis, 34% (n = 78) had visceral metastases, and 0.5% (n = 1) had a solitary visceral metastasis. Most patients were either asymptomatic (54.2%, n = 103) or had mild symptoms (35.2%, n = 67) and 54.6% (n = 83) had an ECOG performance status of 0

at the start of ¹⁷⁷Lu PSMA therapy. The time from castration resistance to the start of ¹⁷⁷Lu PSMA therapy did not differ between responders and nonresponders (p = 0.151).

The following clinical parameters previously described as potential biomarkers in small patient cohorts were assessed at the start and end of ¹⁷⁷Lu PSMA treatment: hemoglobin, thrombocytes, ALP, GGT, C-reactive protein (CRP), and lactate dehydrogenase (LDH) (Table 3) [4].

3.4. Evaluation of clinical parameters as biomarkers for treatment response

A PSA decrease of ≥30% after the first two cycles in comparison to the start of therapy was predictive for treatment response (p = 0.0003 after 1 cycle; p = 0.004 after 2 cycles;

Table 2 – Baseline characteristic of the study population and stratification by treatment success

| | N | Overall cohort | Response/stable disease | Disease progression | p value ^a |
|------------------------------------|-----|-----------------|-------------------------|---------------------|----------------------|
| PSA at pDx (ng/ml) ^b | 233 | 29 (470 ± 2064) | 30 (336.2 ± 1129.6) | 27.5 (228.1 ± 894) | 0.576 |
| Age at diagnosis (yr) ^b | 224 | 64 (63.8 ± 8.1) | 63.8 (63.6 ± 7.11) | 63.3 (62.5 ± 8.24) | 0.390 |
| Metastatic disease | 176 | | | | 0.236 |
| Synchronous (n) | | 102 | 38 | 64 | |
| Metachronous (n) | | 74 | 37 | 37 | |
| Local prostate treatment | 190 | | | | 0.436 |
| None (n) | | 61 | 29 | 32 | |
| RP (n) | | 91 | 33 | 58 | |
| EBRT (n) | | 28 | 14 | 14 | |
| RPE + EBRT (n) | | 9 | 4 | 5 | |
| Other (n) | | 1 | 1 | 0 | |
| ISUP grade group | 128 | | | | 0.088 |
| Grade group 1 (n) | | 3 | 2 | 1 | |
| Grade group 2–3 (n) | | 27 | 9 | 18 | |
| Grade group 4 (n) | | 34 | 14 | 20 | |
| Grade group 5 (n) | | 64 | 24 | 40 | |
| sTx for mHSPC | 173 | | | | 0.875 |
| AA/ADT (n) | | 94 | 40 | 54 | |
| ARSI + ADT (n) | | 65 | 28 | 37 | |
| CTx + ADT (n) | | 14 | 5 | 9 | |
| Volume of disease ^c | 129 | | | | 0.671 |
| Low (n) | | 95 | 39 | 56 | |
| High (n) | | 34 | 13 | 21 | |

PSA = prostate-specific antigen; pDx = primary diagnosis; RP = radical prostatectomy; EBRT = external beam radiation therapy; ISUP = International Society of Urological Pathology; sTx = systemic therapy; mHSPC = metastatic hormone-sensitive prostate cancer; AA = antiandrogen agent; ADT = androgen deprivation therapy; ARSI = androgen receptor signaling inhibitor; CTx = chemotherapy.

^a p value for correlation with progression after ¹⁷⁷Lu prostate-specific membrane antigen ligand therapy. Progression was defined as fulfillment of two of the following three criteria: clinical/symptomatic progression, PSA progression, and progression on imaging.

^b Result presented as median (mean ± standard deviation).

^c Volume of disease according to the CHAARTED criteria.

Table 3 – Clinical parameters at the start of ¹⁷⁷Lu PSMA ligand therapy

| | N | Overall cohort | Response/stable disease | Disease progression | p value ^a |
|------------------------------------------------|-----|----------------------|-------------------------|------------------------|----------------------|
| ECOG PS | 152 | | 71 | 81 | 0.932 |
| ECOG 0 (n) | | 83 | 40 | 43 | |
| ECOG 1 (n) | | 62 | 29 | 33 | |
| ECPG 2 (n) | | 7 | 2 | 5 | |
| Symptoms | 190 | | | | 0.726 |
| Asymptomatic (n) | | 103 | 46 | 57 | 0.726 |
| Symptomatic (n) | | 87 | 35 | 52 | |
| PSA DT (mo) ^b | 91 | 3 (11.1 ± 60.4) | 3.1 (21.7 ± 98.8) | 2.7 (4.3 ± 3.9) | 0.297 |
| PSA DT | 99 | | | | 0.572 |
| >6 mo (n) | | 31 | 14 | 17 | |
| ≤6 mo (n) | | 68 | 31 | 37 | |
| PSA (ng/ml) ^b | 233 | 99.2 (421.6 ± 977.5) | 62.4 (353.9 ± 684) | 109.1 (439.3 ± 1161.5) | 0.176 |
| Hemoglobin (g/l) ^b | 233 | 11.6 (11 ± 5.6) | 12.1 (10.7 ± 3.6) | 11.6 (11.4 ± 7.3) | 0.492 |
| Thrombocytes (10 ⁹ /l) ^b | 233 | 229 (241 ± 91) | 239 (249.9 ± 71) | 228 (241.1 ± 101.9) | 0.130 |
| LDH (U/l) ^b | 204 | 239.5 (318.3 ± 255) | 221 (266.5 ± 149.1) | 237 (300 ± 209.1) | 0.277 |
| CRP (mg/dl) ^b | 231 | 0.53 (13.1 ± 168) | 0.35 (33 ± 284.3) | 0.54 (2.1 ± 3.71) | 0.220 |
| GGT(U/l) ^b | 228 | 31 (68.1 ± 162) | 25 (43.9 ± 53.3) | 30.5 (81.9 ± 218) | 0.116 |
| ALP (U/l) ^b | 228 | 96 (174.5 ± 232) | 91.5 (128.8 ± 128.3) | 94 (178.6 ± 219.3) | 0.113 |
| mPC on PSMA PET-CT | 187 | | | | 0.343 |
| Lymph nodes (n) | | 18 | 9 | 9 | |
| Bone (n) | | 28 | 10 | 18 | |
| Visceral (n) | | 1 | 0 | 1 | |
| Multiple (n) | | 140 | 60 | 80 | |

ECOG PS = Eastern Cooperative Oncology Group performance status; PSA = prostate-specific antigen; DT = doubling time; ALP = alkaline phosphatase; GGT = gamma-glutamyl transferase; CRP = C-reactive protein; LDH = lactate dehydrogenase; mPC = metastatic prostate cancer; PSMA = prostate-specific membrane antigen; PET-CT = positron emission tomography-computed tomography.

^a p value for correlation with disease progression after ¹⁷⁷Lu PSMA therapy. Progression was defined as fulfillment of two of the following three criteria: clinical/symptomatic progression, PSA progression, and progress on imaging.

^b Result presented as median (mean ± standard deviation).

$p = 0.051$ after 3 cycles). Furthermore, the absolute PSA level after all three therapy cycles was a statistically significant marker for therapy response ($p = 0.011$ after 1 cycle; $p = 0.0005$ after 2 cycles; $p = 0.002$ after 3 cycles).

In addition, absolute PSA-DT ($p = 0.012$) and especially a PSA-DT of <6 mo ($p = 0.009$) at the end of ¹⁷⁷Lu PSMA therapy were significantly correlated to disease progression. Patients with any PSA rise after the first cycle of ¹⁷⁷Lu PSMA

Table 4 – Parameters analyzed as potential biomarkers of disease progression using a χ^2 test for categorical variables or a Mann-Whitney U test for continuous variables

| Parameter | p value |
|----------------------------------------------------------------------------------------------------------------|--------------|
| Volume of disease (high vs low) | 0.671 |
| Primary metastatic disease (yes vs no) | 0.236 |
| Location of metastasis (lymph nodes, bone, visceral, multiple) | 0.343 |
| Primary local treatment of the prostate (RP, EBRT, RP + EBRT, none, other) | 0.436 |
| Type of genetic alteration (<i>BRCA1/2</i> , <i>TB53</i> , <i>PIK3CA</i> , multiple) | 0.371 |
| Any positive genetic alteration (yes vs no) | 0.513 |
| Four or more cycles of ¹⁷⁷ Lu PSMA ligand therapy (yes vs no) | 0.724 |
| Prostate-specific antigen doubling time ≤ 6 mo at the start of ¹⁷⁷ Lu PSMA therapy (yes vs no) | 1 |
| Prostate-specific antigen ≥ 100 ng/ml at primary diagnosis (yes vs no) | 0.663 |
| International Society of Urological Pathology grade group (1–3 vs 4–5) | 1 |
| Any primary local treatment of the prostate (yes vs no) | 0.352 |
| Type of systemic treatment in mHSPC (ADT/AA, ARSI, chemotherapy) | 0.875 |
| Age >65 yr at the start of ¹⁷⁷ Lu PSMA therapy (yes vs no) | 0.185 |
| ECOG performance status category (0 vs 1–3) | 0.870 |
| Hemoglobin ≥ 10.4 g/l (yes vs no) | 0.345 |
| Thrombocytes $>300 \times 10^9/l$ (yes vs no) | 0.746 |
| Lactate dehydrogenase ≥ 225 U/l (yes vs no) | 0.271 |
| C-reactive protein >16 mg/dl (yes vs no) | 1 |
| Gamma-glutamyl transferase >31 U/l (yes vs no) | 0.234 |
| Alkaline phosphatase >220 U/l (yes vs no) | 0.048 |
| Asymptomatic vs symptomatic at the start of ¹⁷⁷ Lu PSMA therapy | 0.559 |
| Prostate-specific antigen at diagnosis (in ng/ml) | 0.653 |
| International Society of Urological Pathology grade group (1–5) | 0.924 |
| ECOG performance status at the start of ¹⁷⁷ Lu PSMA therapy | 0.782 |
| Prostate-specific antigen at the start of ¹⁷⁷ Lu PSMA therapy | 0.176 |
| Prostate-specific antigen doubling time at the start of ¹⁷⁷ Lu PSMA therapy | 0.297 |

PSMA = prostate-specific membrane antigen; RP = radical prostatectomy; EBRT = external beam radiation therapy; mHSPC = metastatic hormone-sensitive prostate cancer; ADT = androgen deprivation therapy; AA = antiandrogen agent; ARSI = androgen receptor signaling inhibitor; ECOG = Eastern Cooperative Oncology Group.

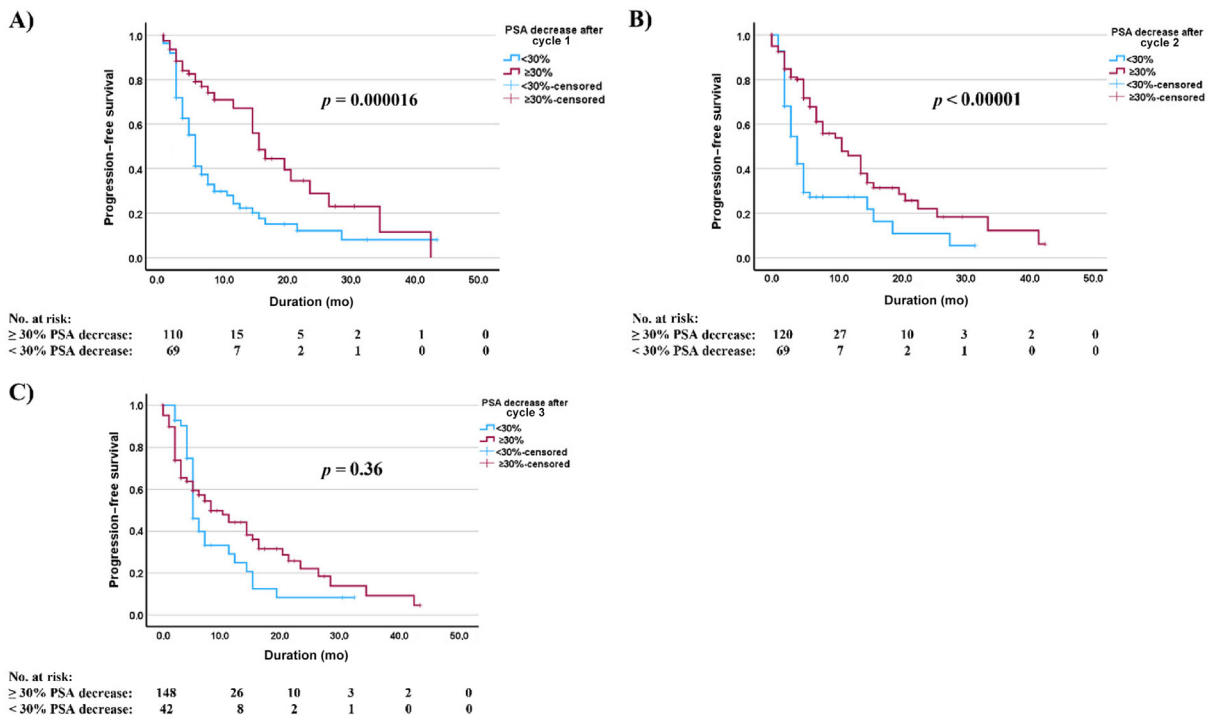


Fig. 1 – Progression-free survival for patients with a prostate-specific antigen (PSA) decrease of $<30\%$ versus $\geq 30\%$ after (A) one, (B) two, and (C) three cycles of ¹⁷⁷Lu prostate-specific membrane antigen ligand therapy.

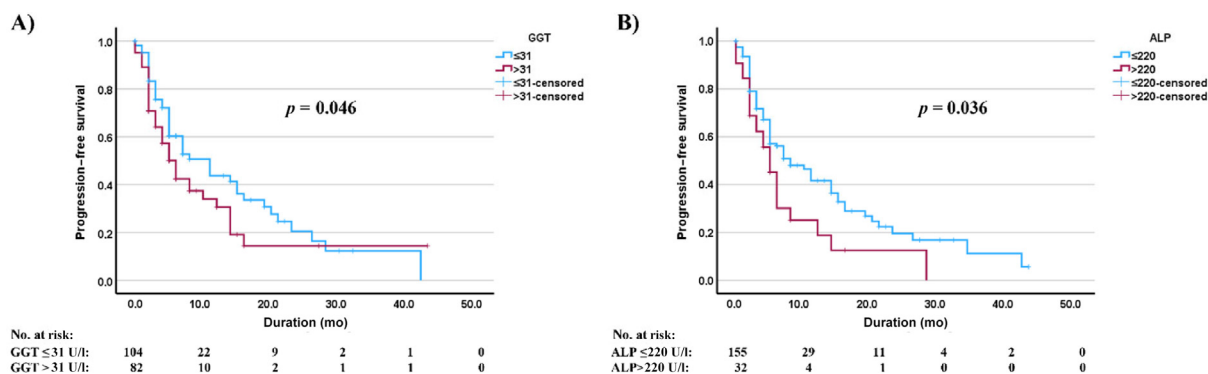


Fig. 2 – Progression-free survival for patients with (A) gamma-glutamyl transferase (GGT) of ≤ 31 versus >31 U/l and (B) alkaline phosphatase (ALP) of ≤ 220 versus >220 U/l at the start of therapy.

had more than twofold higher risk of progression (HR 2.1, 95% confidence interval [CI] 1.4–3.2; $p < 0.001$).

In addition, we found a statistically significant correlation between baseline ALP and treatment response (ALP cutoff level of >220 U/l), indicating that patients with higher baseline ALP were more likely to experience disease progression after ^{177}Lu PSMA ($p = 0.048$). Moreover, laboratory parameters including PSA, CRP, ALP, and GGT at the end of ^{177}Lu PSMA therapy were significantly associated with the risk of progression (Table 1).

In contrast to findings reported by other groups, volume of disease ($p = 0.671$), de novo versus recurrent metastatic disease ($p = 0.236$), site of metastases ($p = 0.343$), primary local treatment of the prostate ($p = 0.436$), primary systemic therapy ($p = 0.216$), ISUP grade group ($p = 0.088$), number of ^{177}Lu PSMA cycles ($p = 0.506$), genetic status ($p = 0.513$), PSA-DT ≤ 6 mo ($p = 0.572$), PSA ≥ 100 ng/ml at treatment start ($p = 0.337$), symptomatic disease ($p = 0.733$), and ECOG performance status ($p = 0.472$) were not significantly correlated to treatment outcome in our cohort (Table 4).

Finally, we performed Kaplan-Meier analysis using the parameters and categories described above. In line with our previous calculations, a PSA decrease of $\geq 30\%$ after the first and second cycles was statistically significantly correlated to treatment response over time (1 cycle: $p = 0.000016$; 2 cycles: $p < 0.00001$; Fig. 1A, B). A PSA decrease $\geq 30\%$ remained statistically significant on multivariate analysis (1 cycle: HR 0.543, 95% CI 0.335–0.880; $p = 0.013$; 2 cycles: HR 0.503, 95% CI 0.319–0.793; $p = 0.003$), suggesting that PSA decrease is a robust early dynamic marker for treatment response. We included PSA decrease $\geq 30\%$ after cycles 1–3, hemoglobin ≥ 10.4 g/l, GGT >31 U/l, and ALP >220 U/l in multivariate analysis. A PSA decrease of $\geq 30\%$ after the third cycle was not statistically significant on Kaplan-Meier analysis (Fig. 1C; $p = 0.360$) or Cox regression (HR 1.172, 95% CI 0.733–1.874; $p = 0.507$).

As depicted in Figure 2, lower GGT (≤ 31 U/l; $p = 0.046$) and ALP (≤ 220 U/l; $p = 0.036$) at treatment start were significantly associated with a lower risk of progression during ^{177}Lu PSMA therapy. To further analyze the strength of these results, we performed multivariate analysis. Only

GGT >31 U/l at treatment start remained a statistically significant predictor (HR 1.546, 95% CI 1.016–2.353; $p = 0.042$), associated with 1.5 times higher risk of progression. When we also adjusted for the presence of visceral metastasis on primary PSMA PET-CT, GGT >31 U/l was no longer statistically significant (HR 1.431, 95% CI 0.906–2.259; $p = 0.124$).

4. Discussion

Radioligand therapy with ^{177}Lu PSMA is a recent FDA- and EMA-approved treatment modality rapidly gaining importance in the therapeutic landscape for mCRPC. Structured information on its clinical performance in the real-world setting is an unmet medical need. Here we present one of the largest international multicenter series assessing the efficacy and tolerability of ^{177}Lu PSMA, which also includes patients with disease characteristics that are under-represented in registration trials (eg, ECOG performance status of 2 or 4, multiple systemic pretreatments).

In summary, our real-world data revealed a PSA decrease of $\geq 30\%$ in 77.8% of our patients and an imaging response or stable disease in 47%. The median TTP was 5 mo, in comparison to 8.7 mo in the VISION trial; the reason for the difference might be that our cohort included heavily pretreated patients and patients with ECOG performance status of 2 or 3. In addition, $>80\%$ of men in our study had ISUP grade group 4 or 5 at primary diagnosis, reflecting the aggressive disease phenotype in our cohort. The multicenter nature of our retrospective observational study means that there were variations in the total number of cycles, cycle intervals, total activity, pretreatment imaging procedures (eg, additional fluorodeoxyglucose PET-CT), and even different ligands used for therapy. Of note, apart from luteinizing hormone-releasing hormone agonists/antagonists, none of the patients included in our trial received any additional systemic therapy that might further influence the therapy outcome.

Our data indicate that a PSA decrease of $\geq 30\%$ after the first two cycles of ^{177}Lu PSMA is an early indicator of treatment response. This finding is in line with data from the REALTY study, which demonstrated that biochemical

response was a predictor of longer OS [6]. Similarly, other studies reported that a PSA decrease after the first two cycles of ^{177}Lu PSMA was a predictor for treatment response and longer OS [7–13]. While most biomarkers described in the literature are based on imaging tools (PSMA tumor load/intensity, tumor-to-liver ratio, bone scan indexes, and nomograms consisting of imaging markers), a PSA decrease after the first two treatment cycles seems to be a valid and robust alternative as an early dynamic clinical biomarker predictive for response that should be used in clinical decision-making [4,12,13].

Furthermore, we found that lower ALP (≤ 220 U/l) was correlated to response to ^{177}Lu PSMA therapy, a finding previously observed in a smaller patient cohort by Ferdinandus and colleagues [14–16]. The Cologne group recently identified initial ALP ≤ 220 U/l as a key predictor for longer OS among patients treated with ^{177}Lu PSMA [17], further strengthening our findings. Another highly interesting result is that baseline GGT ≤ 31 U/l was significantly correlated to response. Similarly, an analysis of 52 patients demonstrated shorter survival for those with elevated GGT levels [18]. On multivariate analysis, only GGT ≤ 31 U/l remained statistically significant and was associated with 1.5 times greater risk of progression; ALP ≤ 220 U/l was no longer significant.

However, after accounting for the presence of visceral metastases as a potential confounding factor for GGT in relation to liver metastases, we found no association between GGT and disease progression, and therefore it cannot be validated as a biomarker for progression in this setting according to the current data set.

In contrast to others, our study did not reveal a significant correlation between baseline hemoglobin, LDH, CRP, or thrombocyte count and treatment response [9,15,19,20]. Other parameters such as age ≥ 65 yr at the start of treatment, disease symptoms, higher Gleason score, poor PS, and metastatic load also showed no correlation to response in our larger data set. One possible explanation and limitation of our study is that some of the other studies used OS for their calculations, while we used response and progression as endpoints [4]. Another limitation is that we can only report on changes in ECOG PS and not on side effects, treatment interruptions, or even dropout rates, which would be interesting from a real-world perspective. Furthermore, one limitation of our statistical analysis is that because of the explorative nature of our study and the lack of a prespecified statistical approach, we did not correct for multiple testing.

5. Conclusions

Our results confirm that ^{177}Lu PSMA ligand therapy is an effective treatment option in real-world practice. A PSA decrease $\geq 30\%$ after the first two cycles is an early indicator of treatment response and should therefore be implemented in clinical practice. In addition, we identified baseline ALP ≤ 220 U/l and especially GGT ≤ 31 U/l as indicators

of response to ^{177}Lu PSMA for patients without but not with visceral metastases.

Author contributions: Isabel Heidegger had full access to all the data in the study and takes responsibility for the integrity of the data and the accuracy of the data analysis.

Study concept and design: Heidegger, Kafka.

Acquisition of data: All authors.

Analysis and interpretation of data: Heidegger, Neuwirt, Kafka.

Drafting of the manuscript: Heidegger, Kafka.

Critical revision of the manuscript for important intellectual content: All authors.

Statistical analysis: Kafka, Neuwirt.

Obtaining funding: None.

Administrative, technical, or material support: None.

Supervision: Heidegger.

Other: None.

Financial disclosures: Isabel Heidegger certifies that all conflicts of interest, including specific financial interests and relationships and affiliations relevant to the subject matter or materials discussed in the manuscript (eg, employment/affiliation, grants or funding, consultancies, honoraria, stock ownership or options, expert testimony, royalties, or patents filed, received, or pending), are the following: None.

Funding/Support and role of the sponsor: None.

Appendix A. Supplementary data

Supplementary data to this article can be found online at <https://doi.org/10.1016/j.euo.2023.07.018>.

References

- [1] Mottet N, Cornford P, van den Bergh RCN, et al. EAU-EANM-ESTRO-ESUR-ISUP-SIOG guidelines on prostate cancer. Arnhem, The Netherlands: European Association of Urology; 2023.
- [2] Sartor O, de Bono J, Chi KN, et al. Lutetium-177-PSMA-617 for metastatic castration-resistant prostate cancer. *N Engl J Med* 2021;385:1091–103.
- [3] Hofman MS, Emmett L, Sandhu S, et al. [^{177}Lu]Lu-PSMA-617 versus cabazitaxel in patients with metastatic castration-resistant prostate cancer (TheraP): a randomised, open-label, phase 2 trial. *Lancet* 2021;397:797–804.
- [4] Heidegger I, Kesch C, Kretschmer A, et al. Biomarkers to personalize treatment with ^{177}Lu -PSMA-617 in men with metastatic castration-resistant prostate cancer – a state of the art review. *Ther Adv Med Oncol* 2022;14:17588359221081922.
- [5] Sweeney CJ, Chen YH, Carducci M, et al. Chemohormonal therapy in metastatic hormone-sensitive prostate cancer. *N Engl J Med* 2015;373:737–46.
- [6] Khreish F, Ghazal Z, Marlowe RJ, et al. ^{177}Lu -PSMA-617 radioligand therapy of metastatic castration-resistant prostate cancer: Initial 254-patient results from a prospective registry (REALITY Study). *Eur J Nucl Med Mol Imaging* 2022;49:1075–85.
- [7] Rasul S, Hartenbach M, Wollenweber T, et al. Prediction of response and survival after standardized treatment with 7400 MBq ^{177}Lu -PSMA-617 every 4 weeks in patients with metastatic castration-resistant prostate cancer. *Eur J Nucl Med Mol Imaging* 2021;48:1650–7.

- [8] Kessel K, Seifert R, Schäfers M, et al. Second line chemotherapy and visceral metastases are associated with poor survival in patients with mCRPC receiving ¹⁷⁷Lu-PSMA-617. *Theranostics* 2019;9:4841–8.
- [9] Grubmüller B, Senn D, Kramer G, et al. Response assessment using ⁶⁸Ga-PSMA ligand PET in patients undergoing ¹⁷⁷Lu-PSMA radioligand therapy for metastatic castration-resistant prostate cancer. *Eur J Nucl Med Mol Imaging* 2019;46:1063–72.
- [10] Grubmüller B, Rasul S, Baltzer P, et al. Response assessment using [⁶⁸Ga]Ga-PSMA ligand PET in patients undergoing systemic therapy for metastatic castration-resistant prostate cancer. *Prostate* 2020;80:74–82.
- [11] Gafita A, Heck MM, Rauscher I, et al. Early prostate-specific antigen changes and clinical outcome after ¹⁷⁷Lu-PSMA radionuclide treatment in patients with metastatic castration-resistant prostate cancer. *J Nucl Med* 2020;61:1476–83.
- [12] Emmett L, John N, Pathmanandavel S, et al. Patient outcomes following a response biomarker-guided approach to treatment using ¹⁷⁷Lu-PSMA-I&T in men with metastatic castrate-resistant prostate cancer (Re-SPECT). *Ther Adv Med Oncol* 2023;15:17588359231156392.
- [13] Telli T, Tuncel M, Karabulut E, et al. Prognostic factors of overall and prostate-specific antigen-progression-free survival in metastatic castration-resistant prostate cancer patients treated with ¹⁷⁷Lu-PSMA-617. A single-center prospective observational study. *Prostate* 2023;83:792–800.
- [14] Ferdinandus J, Violet J, Sandhu S, Hofman MS. Prostate-specific membrane antigen theranostics: therapy with lutetium-177. *Curr Opin Urol* 2018;28:197–204.
- [15] Ferdinandus J, Eppard E, Gaertner FC, et al. Predictors of response to radioligand therapy of metastatic castrate-resistant prostate cancer with ¹⁷⁷Lu-PSMA-617. *J Nucl Med* 2017;58:312–9.
- [16] Ferdinandus J, Violet J, Sandhu S, et al. Prognostic biomarkers in men with metastatic castration-resistant prostate cancer receiving [¹⁷⁷Lu]-PSMA-617. *Eur J Nucl Med Mol Imaging* 2020;47:2322–7.
- [17] Schneider CA, Täger P, Hammes J, et al. Treatment outcome and identification of factors influencing overall survival after Lu-177-PSMA-617 radioligand therapy in metastatic prostate cancer. *Nuklearmedizin* 2022;61:25–32.
- [18] Wrenger R, Jüptner M, Marx M, et al. Pre- and intratherapeutic predictors of overall survival in patients with advanced metastasized castration-resistant prostate cancer receiving Lu-177-PSMA-617 radioligand therapy. *BMC Urol* 2022;22:96.
- [19] Hartrampf PE, Seitz AK, Weinzierl FX, et al. Baseline clinical characteristics predict overall survival in patients undergoing radioligand therapy with [¹⁷⁷Lu]Lu-PSMA I&T during long-term follow-up. *Eur J Nucl Med Mol Imaging* 2022;49:4262–70.
- [20] Yordanova A, Linden P, Hauser S, et al. The value of tumor markers in men with metastatic prostate cancer undergoing [¹⁷⁷Lu]Lu-PSMA therapy. *Prostate* 2020;80:17–27.